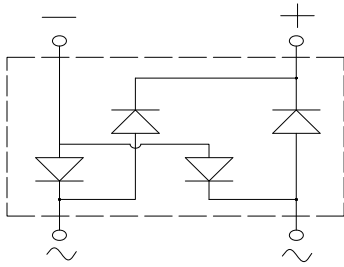
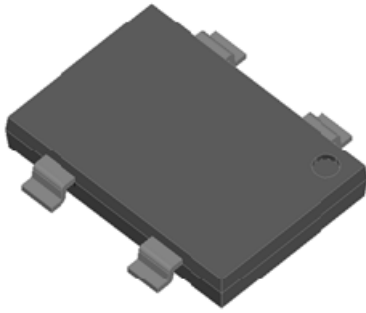


Bridge Rectifiers



Features

- Ideal for automated placement
- High surge current capability
- Meets MSL level 1, per J-STD-020, LF maximum peak of 260 °C

Typical Applications

General purpose use in AC/DC bridge full wave rectification for SMPS, lighting ballaster, adapter, battery charger, home appliances, office equipment, and telecommunication applications.

Mechanical Data

- **Package:** YBS3
Molding compound meets UL 94 V-0 flammability rating, RoHS-compliant, Halogen-free
- **Terminals:** Tin plated leads, solderable per J-STD-002 and JESD22-B102
- **Polarity:** As marked on body

■ Maximum Ratings (T_a=25°C Unless otherwise specified)

PARAMETER	SYMBOL	UNIT	YBSM60005	YBSM6001	YBSM6002	YBSM6004	YBSM6006	YBSM6008	YBSM6010
Device marking code			YBSM60005	YBSM6001	YBSM6002	YBSM6004	YBSM6006	YBSM6008	YBSM6010
Repetitive peak reverse voltage	VRRM	V	50	100	200	400	600	800	1000
Average rectified output current @60Hz sine wave, R-load, T _c =80°C	I _O	A	6.0						
Surge(non-repetitive)forward current @60Hz sine wave, 1 cycle, T _j =25°C	IFSM	A	150						
Current squared time @1ms≤t≤8.3ms T _j =25°C, Rating of per diode	I ² t	A ² s	93.4						
Storage temperature	T _{stg}	°C	-55 ~+150						
Junction temperature	T _j	°C	-55 ~+150						

■ Electrical Characteristics (T_a=25°C Unless otherwise specified)

PARAMETER	YMBOL	UNIT	TEST CONDITIONS	YBSM60005	YBSM6001	YBSM6002	YBSM6004	YBSM6006	YBSM6008	YBSM6010
Maximum instantaneous forward voltage drop per diode	V _F	V	IFM=3.0A	1.0						
Maximum DC reverse current at rated DC blocking voltage per diode @ VRM=VRRM	I _{RRM}	μA	T _j =25°C	5						



YBSM60005 THRU YBSM6010

■ Thermal Characteristics (Ta=25°C Unless otherwise specified)

PARAMETER		SYMBOL	UNIT	YBSM60005	YBSM6001	YBSM6002	YBSM6004	YBSM6006	YBSM6008	YBSM6010
Thermal Resistance	Between Junction and Ambient without heatsink	RθJ-A	°C/W	55 ⁽¹⁾						
	Between Junction and Lead without heatsink	RθJ-L		10 ⁽¹⁾						
	Between Junction and Case without heatsink	RθJ-C		5 ⁽¹⁾						

Note:(1)Thermal resistance mounted on P.C.B with 30mm*15mm.*1.6mm

■ Ordering Information (Example)

PREFERRED P/N	PACKING CODE	UNIT WEIGHT(g)	MINIIMUM PACKAGE(pcs)	INNER BOX QUANTITY(pcs)	OUTER CARTON QUANTITY(pcs)	DELIVERY MODE
YBSM60005 THRU YBSM6010	F1	Approximate 0.36	1800	3600	25200	13" Reel

■ Characteristics(Typical)

FIG1:Io-Tc Curve

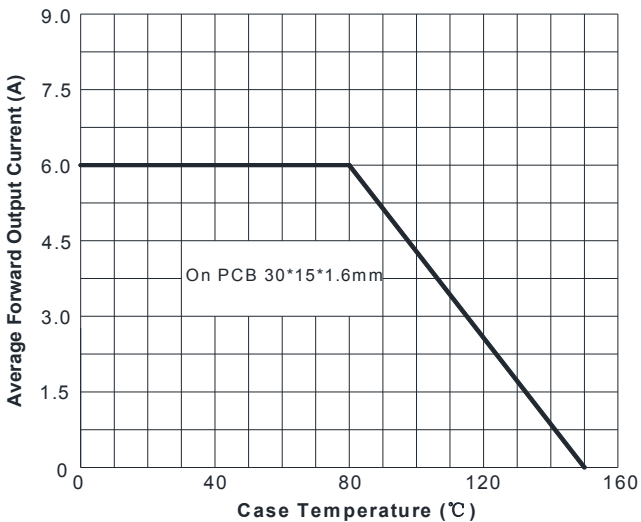


FIG2:Surge Forward Current Capability

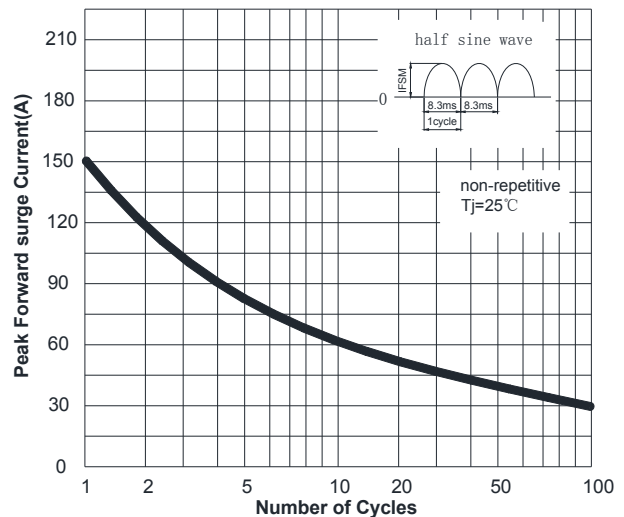


FIG3: Forward Voltage

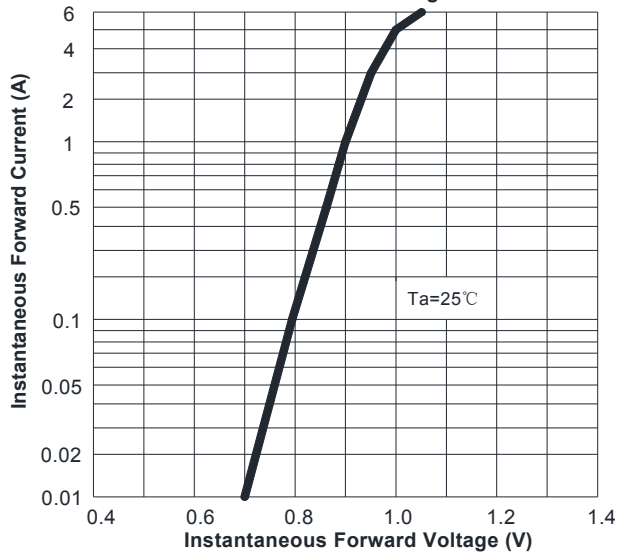
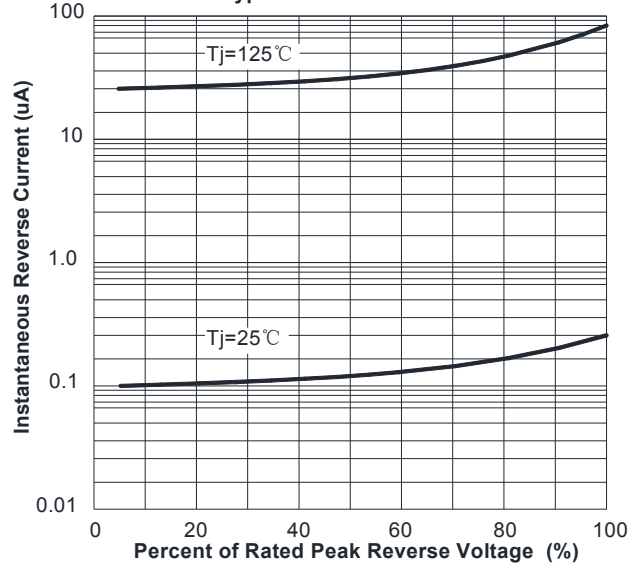


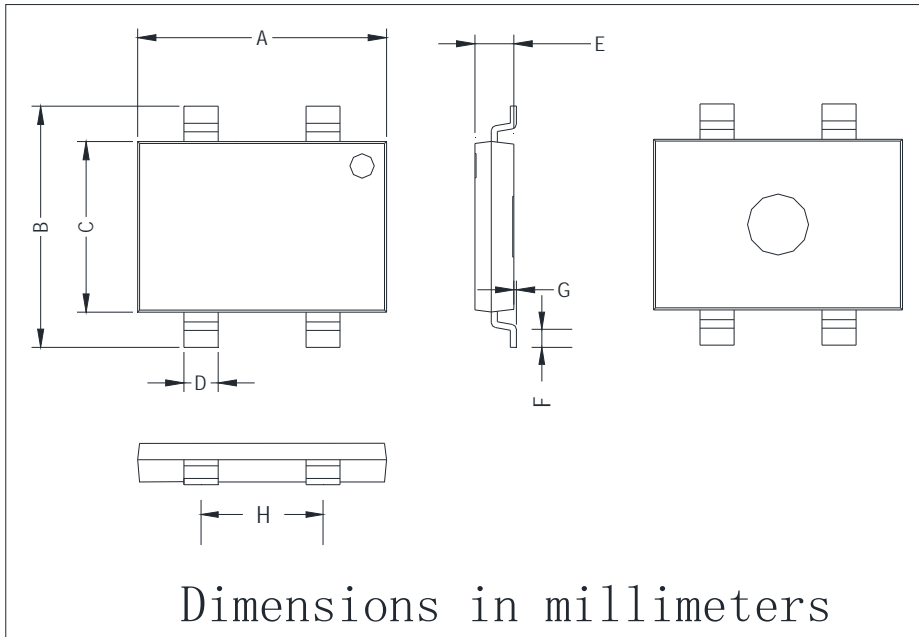
FIG4:Typical Reverse Characteristics





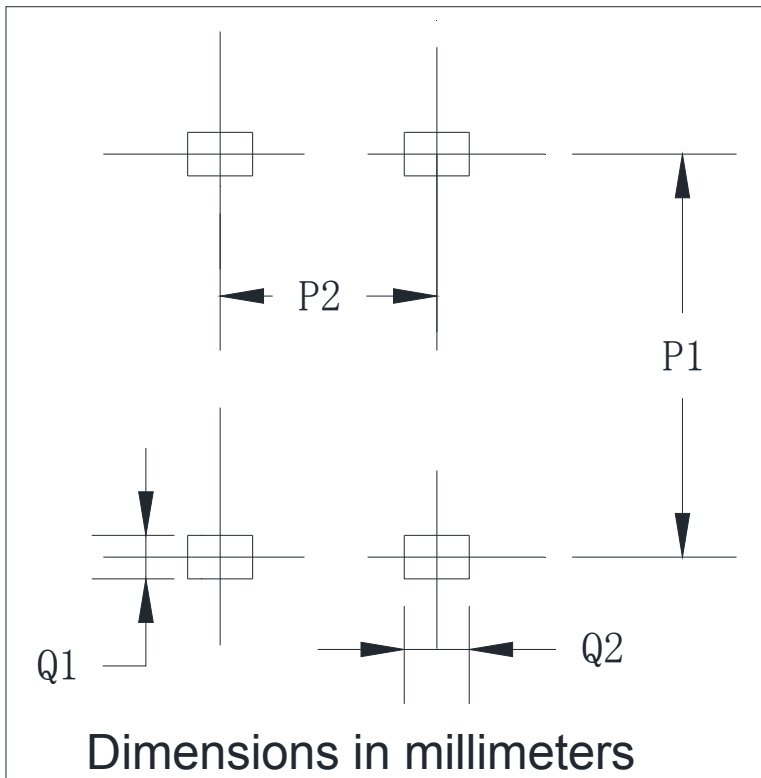
YBSM60005 THRU YBSM6010

■ Outline Dimensions



YBS3		
Dim	Min	Max
A	10.00	10.40
B	9.70	10.10
C	6.80	7.20
D	1.3	1.5
E	1.4	1.8
F	0.5	1.1
G	0	0.15
H	4.9	5.1

■ Suggested pad layout



YBS3	
Dim	Min
P1	9.25
P2	5.00
Q1	1.00
Q2	1.5



YBSM60005 THRU YBSM6010

Disclaimer

The information presented in this document is for reference only. Yangzhou Yangjie Electronic Technology Co., Ltd. reserves the right to make changes without notice for the specification of the products displayed herein to improve reliability, function or design or otherwise.

The product listed herein is designed to be used with ordinary electronic equipment or devices, and not designed to be used with equipment or devices which require high level of reliability and the malfunction of which would directly endanger human life (such as medical instruments, transportation equipment, aerospace machinery, nuclear-reactor controllers, fuel controllers and other safety devices), Yangjie or anyone on its behalf, assumes no responsibility or liability for any damages resulting from such improper use of sale.

This publication supersedes & replaces all information previously supplied. For additional information, please visit our website [http:// www.21yangjie.com](http://www.21yangjie.com) , or consult your nearest Yangjie's sales office for further assistance.