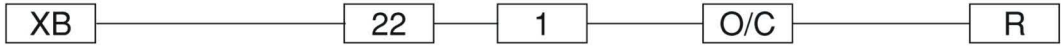
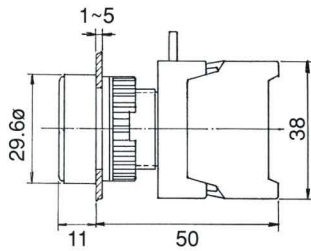


# PUSH BUTTON SWITCHES, IP65

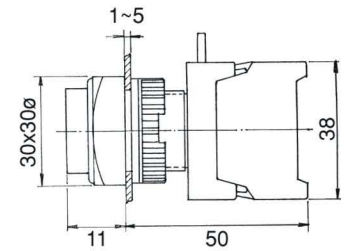


Type	Mounting hole	No. of contact	Type of contact	Lens colour
XB, GBF, PBF: Flat head	22 : 22 $\phi$	1	O: N/O(a)	● R: Red
XBL, GBL, PBL: Long head	30 : 30 $\phi$	2	C: N/C(b)	● G: Green
XBS: Square head		3	O/C: N/O+N/C	● Y: Yellow
XLS: Square long head		4	1a+1b	● BL: Blue
XBG: Guard ring				● BK: Black
XGS: Guard ring square				○ W: White
XE, EB, GEB, XES: Mushroom head 40 $\phi$				
BXE, BEB: Mushroom head 60 $\phi$				
LEB, GLEB: Latching head				
PF, EPF, GPF, GEPP: Push on-Push off				

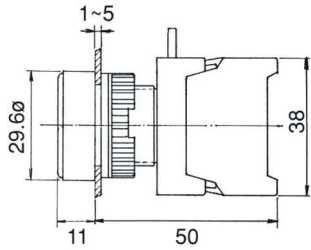
**XB22-1/O**



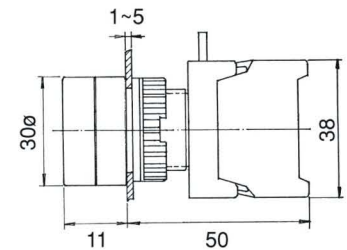
**XLS22-1/O XLS22-1O/C**  
**XLS22-1/C**



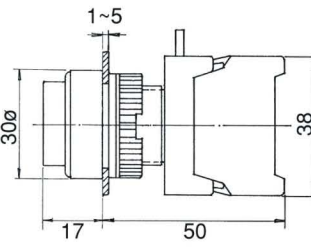
**XB22-1O/C**



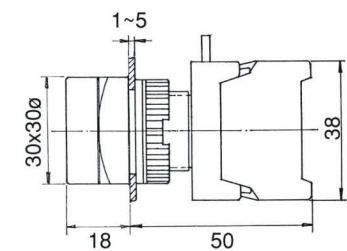
**XBG22-1/O XBG22-1O/C**  
**XBG22-1/C**



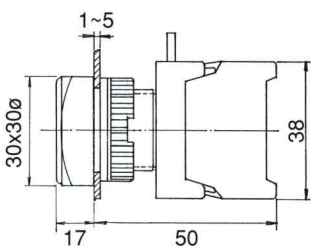
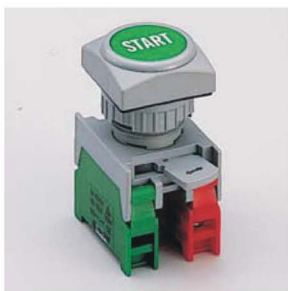
**XBL22-1/O XBL22-1O/C**  
**XBL22-1/C**



**XGS22-1/O XGS22-1O/C**  
**XGS22-1/C**



**XBS22-1/O XBS22-1O/C**  
**XBS22-1/C**



**XE22-1/O XE22-1O/C**  
**XE22-1/C**

