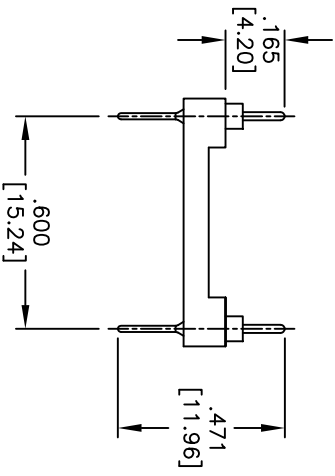
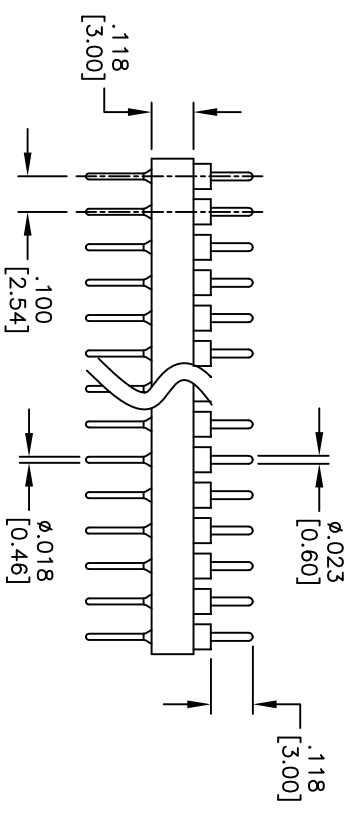
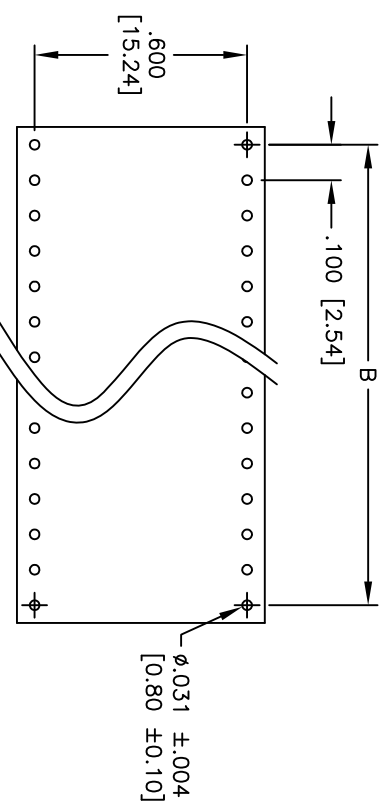
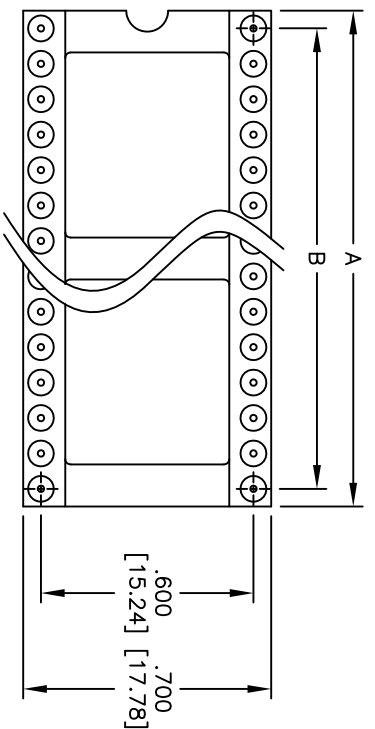


APPROVED: _____
 DATE: _____ TITLE: _____

Rev	AWO #	Description	Date	Appr
-		RELEASED	9/5/08	
A		REVISED SPEC. & DIM.	3/30/12	



SPECIFICATIONS:

Material: Polyester, Glass reinforced, rated UL 94V-0
 Insulator color: Black
 Contacts: Copper alloy
 Plating: Gold over Nickel underplate overall
 Electrical:
 Voltage rating: 100 VRMS / 150VDC
 Current rating: 3 Amp max
 Insulation resistance: 10,000 Mohms @500 VDC
 Temperature Rating:
 Operating temperature: -55°C to +125°C
 Environmental:
 Lead free, RoHS compliant

Positions: 24, 28, 32, 36, 40, 42, 48, 50 & 52
 A = .100 [2.54] x No. of Positions
 B = .100 [2.54] x No. of Spaces

ADAM TECH

909 Rahway Avenue, Union, NJ 07083
 Phone: 908-687-5000 Fax: 908-687-5710

SCREW MACHINE TERMINAL STRIP
 .100 [2.54] SPACING, GOLD PLATED



UNLESS OTHERWISE SPECIFIED ALL DIMENSIONS ARE INCHES [MM]	
TOLERANCES: EXCEPT AS NOTED	
INCHES	HOLES
.X ± .10	± .10
.XX ± .020	± .015
.XXX ± .015	± .010
APPROVALS	DATE
DRAWN	SS
CHECKED	
APPROVED	

TITLE	SCREW MACHINE TERMINAL STRIP	
SIZE	PART NO.	TMC-6XX-1-G
REF:	S00007T	SCALE: NTS
REV.		SHEET 1 OF 1