



■Description

- 100pcs standard 3mm LED are supplied in a storage box
- Easy to use and storage
- Widely applied to DIY projects, school science experiments, car decorations, etc.

■Features

- 3mm round standard 30° directivity
- UV resistant epoxy
- Blue color
- Color diffused

■Absolute Maximum Rating (Ta=25°C)

| Item | Symbol | Value | Unit |
|----------------------------|------------------|------------|------|
| | | Blue | mA |
| DC Forward Current | I _F | 30 | mA |
| Pulse Forward Current# | I _{FP} | 100 | V |
| Reverse Voltage | V _R | 5 | mW |
| Power Dissipation | P _D | 102 | °C |
| Operating Temperature | T _{opr} | -30 ~ +85 | °C |
| Storage Temperature | T _{stg} | -40~ +100 | - |
| Lead Soldering Temperature | T _{sol} | 260°C/5sec | Unit |

#Pulse width Max.10ms Duty ratio max 1/10

■Electrical -Optical Characteristics (Ta=25°C)

| 3mm LED | |
|----------------------------|---------------|
| LED P/N | OSB53134A |
| Light Color | Blue |
| Lens Color | Blue Diffused |
| Wavelength*1 | 462.5-472.5nm |
| Luminous Intensity(typ.)*2 | 2500mcd |
| Forward Voltage*3 | 2.7-3.4V |
| Forward Current | 20mA |
| Viewing Angle(typ.) | 30° |
| Quantity(pcs)/Box | 100 |

*1 Tolerance of measurements of dominant wavelength is ±1nm

*2 Tolerance of measurements of luminous intensity is ±15%

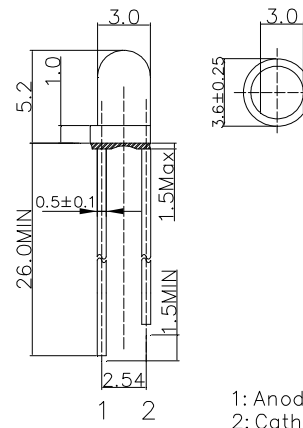
*3 Tolerance of measurements of forward voltage is ±0.1V

■Product Picture

100pcs/Box (Dimensions: 80*54*30mm)



■Outline Dimension



1: Anode
2: Cathode
Unit: mm
Tolerance: ±0.20mm
unless otherwise noted

■Directivity

