

8x16mm single color side emitting led neon strip DC24V



◆ Product Description:

This neon strip is side view with a translucent silicone rubber as a diffuser, light uniform and no spot. It is designed to be bent side to side with light projecting upwards.

This silicone rubber is anti-UV, anti-yellowing, anti-aging, environmental protection, non-toxic, and very soft.

Use highlighted 2835 LED chips, it's long life, low light decay, and good color consistency. Standard length is 5M/roll, length can be customized, there are cutting marks on the side.

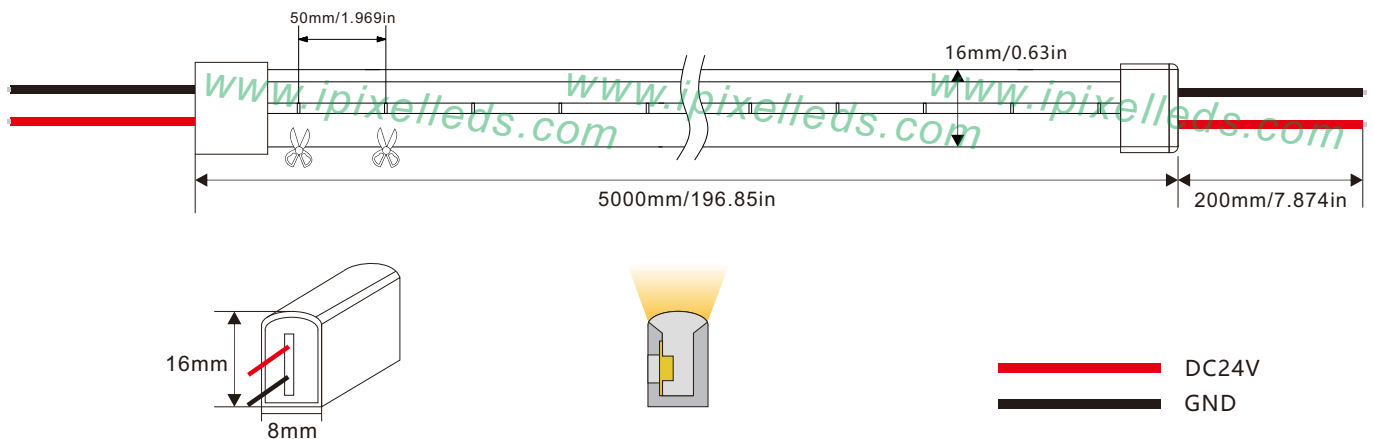
IP65 waterproof for outdoor use



◆ Product Datasheet

Product Number	N008120BC1LZ	Lumens/M	W: 480lm
Operating Voltage	DC24V	Ra	≥ 80
Power/M	10W	Beam Angle	150°
SMD Type	SMD 2835	Size (mm)	5000x8x16mm
LED Qty/M	120	IP Rate	IP65
Color	R/G/B/W:3000K/4000K/6000K	Operation Temperature	- 25 ~ 60 °C
Pixel/M	/	Material	Silicone
Control mode	/	Cutting Length	50mm
Wavelength	R:620-625 G:520-525 B:460-465nm	Net Weight/Roll	0.8Kg

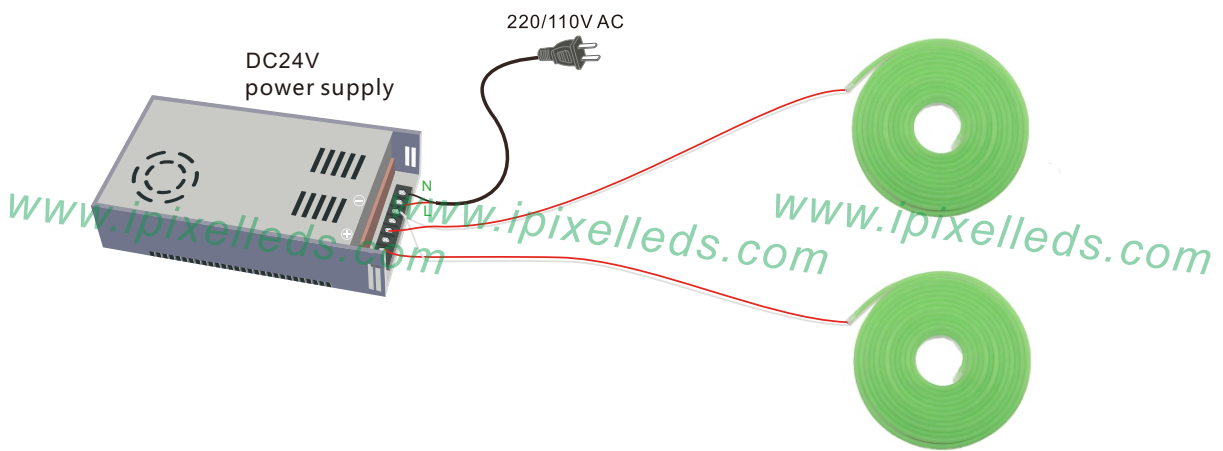
◆ Outline Dimension (unit: mm)



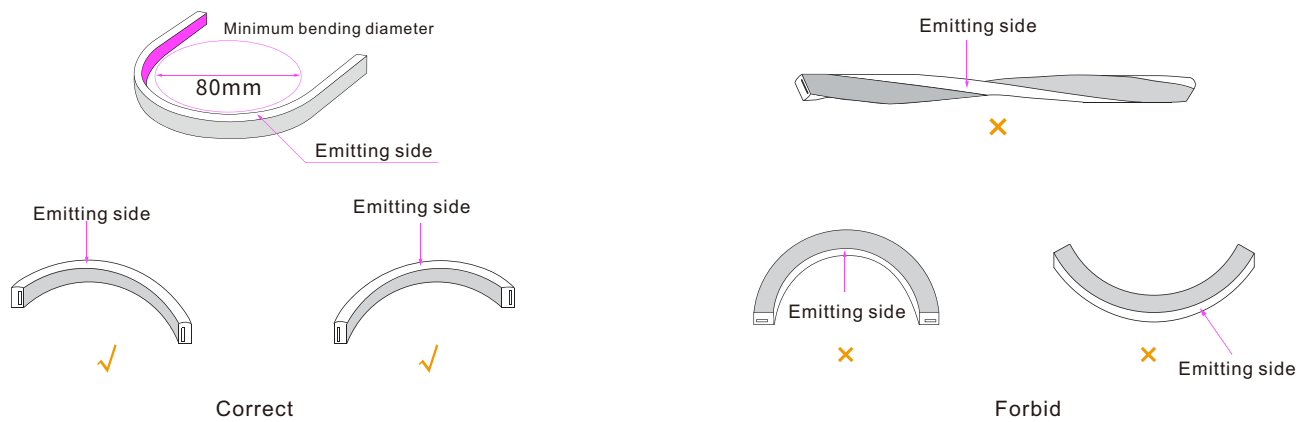
◆ Order number

DC24V	R	White PCB	IP65	N008120BC1LZ/C1
DC24V	G	White PCB	IP65	N008120BC1LZ/C2
DC24V	B	White PCB	IP65	N008120BC1LZ/C3
DC24V	3000 K	White PCB	IP65	N008120BC1LZ/C4
DC24V	4000 K	White PCB	IP65	N008120BC1LZ/C5
DC24V	5000 K	White PCB	IP65	N008120BC1LZ/C6
DC24V	6000 K	White PCB	IP65	N008120BC1LZ/C7

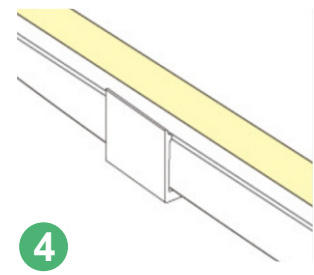
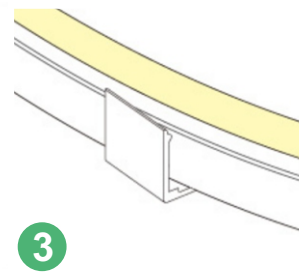
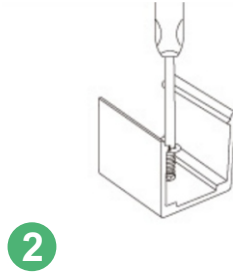
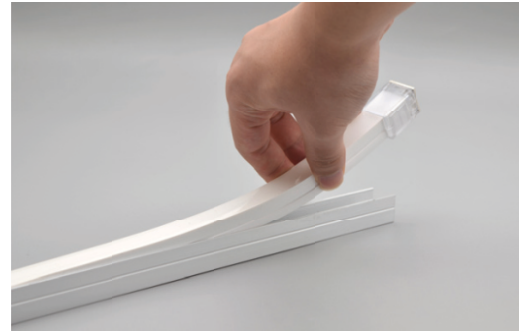
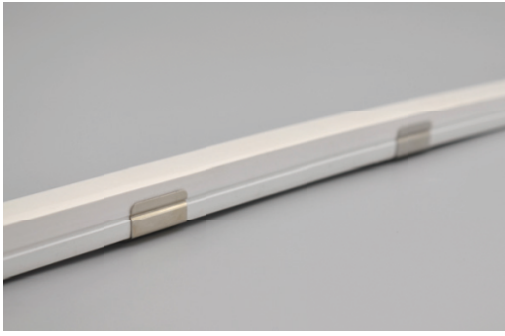
◆ Wiring diagram



◆ Correct bending way



Note: The parameters are subject to change without notice!



Note: The parameters are subject to change without notice!