

CIRCUIT: SPDT  
CONTACT CONFIGURATION  
45° INDEXING

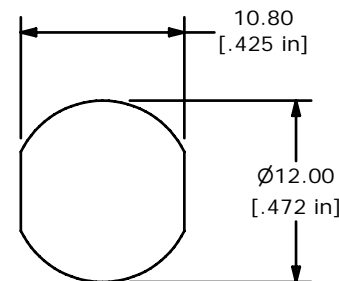
SWITCH FUNCTION		
POS 1	POS 2	POS 3
↙	↑	→
OFF	ON 1-2	ON 3-4

LEGEND

- = INDICATES KEY PULL POSSIBLE
- = DETENT POSITION

NOTES:

1. ALL DIMENSIONS IN MM[INCH]
2. GENERAL TOLERANCE: x.x= ±0.4  
x.xx= ±0.25
3. TERM. NOS. FOR REFERENCE ONLY.
- ▲ 4. RATING: 1A @125VAC, 0.5A @250VAC
5. CONTACT RESISTANCE: 10milli-OHMS
6. DIELECTRIC STRENGTH: 1000 VAC-1Minute
7. MATERIALS:  
HOUSING: ZINC ALLOY W/CHROME PLATING  
CYLINDER: ZINC ALLOY W/CHROME PLATING  
▲ TERMINAL AND CONTACTS: SILVER PLATED  
▲ KEYS (2) KEY CODE 1501: ZINC ALLOY, CHROME PLATING
8. ▲ DENOTES CRITICAL PARAMETER.
9. 2002/95/EC (ROHS) COMPLIANT
- ▲ 10. KEYLOCK, KEYS, AND HEX NUT TO BE PACKED TOGETHER IN INDIVIDUAL BAGS.



RECOMENDED PANEL CUTOUT



TITLE KO132C1501

C	17991	REDRAWN AND ADD NOTE 10	3/3/08	RC
REV	PCR NO	DESCRIPTION	DATE	BY

SCALE	DATE	DR	DWG	REV
2:1	3/3/2008	RC	K400104	C

THE INFORMATION CONTAINED IN THIS DOCUMENT IS PROPRIETARY TO E-SWITCH AND IS NOT TO BE COPIED OR TRANSFERRED