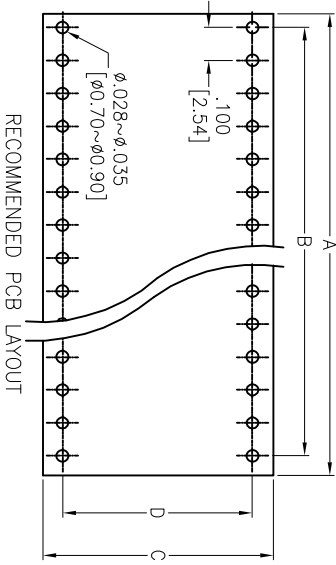
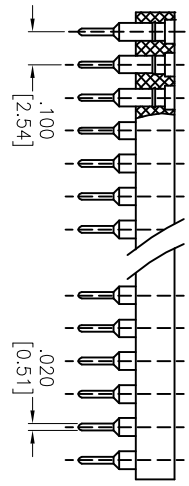
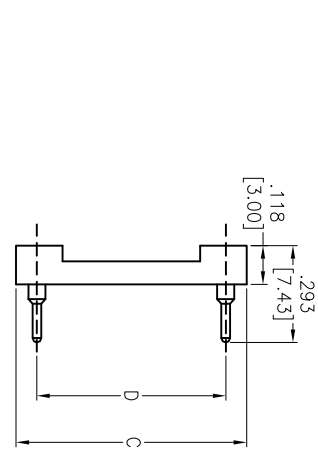
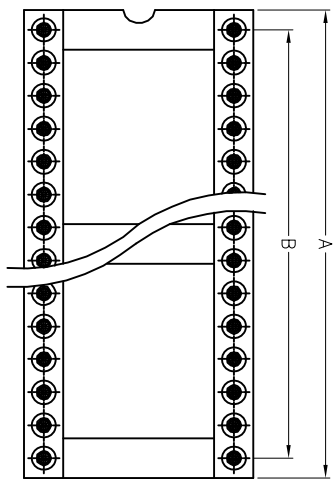


APPROVED: _____
 DATE: _____ TITLE: _____

Rev	AWO #	Description	Date	Appr
-		RELEASED	3/30/05	
A		REVISED & REDRAWN	10/06/11	
B		REVISED SPEC.	10/25/11	
C		REVISED DIM.	03/08/12	



Series	POSITION	A	B	C	D
24		1.20 [30.48]	1.10 [27.94]		
28		1.40 [35.56]	1.30 [33.02]		
32		1.60 [40.64]	1.50 [38.10]		
36		1.80 [45.72]	1.70 [43.18]	.700	
40		2.00 [50.80]	1.90 [48.26]	.700	.600
42		2.10 [53.34]	2.00 [50.80]	[1.778]	[15.24]
48		2.40 [60.96]	2.30 [58.42]		
50		2.50 [63.50]	2.40 [60.96]		
52		2.60 [66.04]	2.50 [63.50]		

SPECIFICATIONS:

Material:

Insulator: Glass filled thermoplastic polyester, rated UL 94V-0

Insulator color: Black

Contacts: Brass

Clip: Beryllium copper

Plating:

Gold over Nickel underplate on inner contacts,
 Tin over Copper underplate on outer sleeve

Electrical :

Current rating : 3amps/contact max.

Current resistance : $\leq 4m\Omega$ / contact

Insulation resistance : $\geq 10,000M\Omega$ at 500 VAC

Rated voltage : 100 VRMS / 150VDC

Mechanical :

Operating temperature : Gold plated: $-55^{\circ}C$ to $+ 125^{\circ}C$
 Tin plated: $-40^{\circ}C$ to $+ 105^{\circ}C$

Average insertion force : $< 250g$

With steel pin of $\phi .017$ [0.43mm]

Average withdrawal force : $> 50g$

With steel pin of $\phi .017$ [0.43mm]

Mechanical life : min. 200

Environmental:

Lead free, RoHS compliant.



ADAM TECH

909 Railway Avenue, Union, NJ 07083
 Phone: 908-687-5000 Fax: 908-687-5710

SCREW MACHINE IC SOCKET
 .600" ROW SPACING

UNLESS OTHERWISE SPECIFIED ALL DIMENSIONS ARE INCHES [MM]	
TOLERANCES: EXCEPT AS NOTED	
INCHES	HOLDS
.X $\pm .10$	$\phi X \pm .10$
.XX $\pm .020$	$\phi XX \pm .015$
.XXX $\pm .015$	$\phi XXX \pm .010$
APPROVALS	DATE
DRAWN	SS
CHECKED	
APPROVED	

SIZE	PART NO.	REV.
X	ICM-6XX-1-GT	C
REF: S0007T	SCALE: NTS	SHEET 1 OF 1