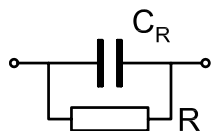
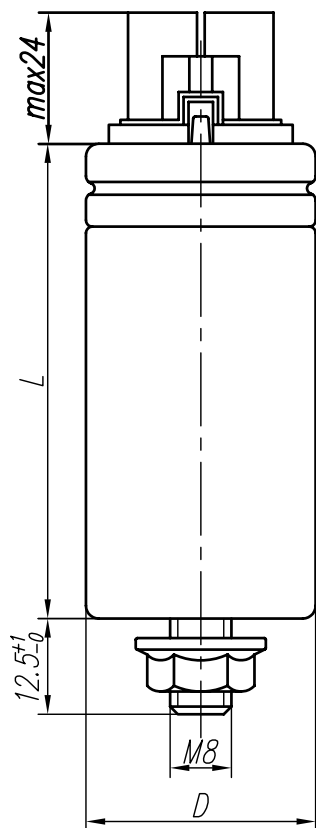


AC METALLIZED POLYPROPYLENE FILM CAPACITORS FOR USE IN DISCHARGE LAMP CIRCUITS (TYPE B)

Ver. 4



Capacitor dimensions

Capacitance $\mu\text{F}/V_{ac}$	Capacitor dimensions	
	D_{ϕ}^{+1} mm	$L_{\pm 2}$ mm
4,5	25	62
6,5		
9	30	74
10		
12,5		
16		
20	40	74
25		
32	40	87
45	45	

TECHNICAL DATA

- Capacitance tolerance:
- Rated voltage:
- Climatic category:
- Relative humidity in capacitor environment at $20 \pm 25 \text{ }^{\circ}\text{C}$:

- $\pm 5\%$,
- 250V /50-60Hz ,
- 40/100/10,
- 75% (annual average)
- 95% (max value within 30 days)

No vapour condensation on the capacitor surface is allowed.

- Dissipation factor ($\text{tg}\delta$):
- Dielectric strength between terminals:
between terminals connected together and case:

- $\leq 0,0015$ at $f = 50\text{Hz}$,
- $2U_N / 50\text{Hz} - 2\text{sec}$,
- $2\text{kV} / 50\text{Hz} - 2\text{sec}$,

-dV/dt:

- The capacitors meet the requirements of:

- $\leq 20\text{V}/\mu\text{sec}$.
- PN-EN 61048 and PN-EN 61049.

This product fulfils the requirements of RoHS (2011/65/UE).

APPLICATION

The MKSP-I60 capacitors (type B) are intended to use in a.c. circuits with a frequency of 50-60Hz, particularly in the circuits of discharge lamps (eg. fluorescent lamps, sodium-vapour lamps, etc) as parallel capacitors. These capacitors are characterized by low inductance, reliable contact, and self-healing ability. The winding element is placed into aluminium case. The MKSP-I60 capacitors (type B) have overpressure safety break-action mechanism, which to ensure a proper operation requires a free distance of at least 10mm above the terminals. In case of failure or end of the capacitor's useful service life, the pressure may rise inside the capacitor. With the rising pressure, the case begins to expand by opening the fold crimp. As a result, the connecting wires inside the capacitor are separated and the current path is interrupted irreversibly. This way, the capacitor is disconnected from the mains, and no conducting or burning parts can escape from inside the capacitor. Capacitor terminal is a WAGO connector with resistor. Terminal is fitted for assembly of solid wires with the cross-section of $0.5 \pm 1.5\text{mm}^2$.

 **MIFLEX SA**

ZAKŁADY PODZESPOŁÓW RADIOWYCH
GRUNWALDZKA 3, 99-300 KUTNO, POLAND
Telephone: +48 24 355 11 00
Fax: +48 24 355 11 88
e-mail: miflex@miflex.com.pl

Revision date
14.10.2013

Page
1