

Technical manual
Instrukcja techniczna
Technische Anleitung
Manuel technique



Y¹ → 208

mounting plate Y
uchwyt Y
Halter Y
fixation Y

Y² → 208

mounting plate Y cone
uchwyt Y cone
Halter Y cone
fixation Y cône

T¹ → 204

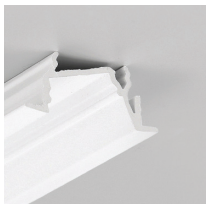
mounting plate T
uchwyt T
Halter T
fixation T

T² → 204

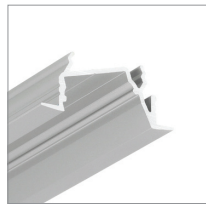
connector T 180 deg
łącznik T 180 st
Verbinder T 180 Grad
connecteur T 180 degrés

F → 199

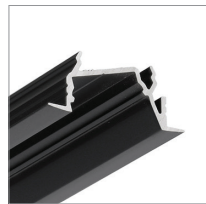
diffuser F click
klosz F klik
Abdeckung F einclipsbar
diffuseur F clic



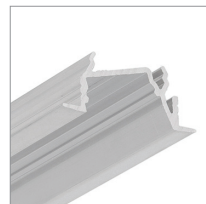
white painted
biały malowany
weiß lackiert
peint en blanc



anodized
anodowany
eloxiert
surface anodisée



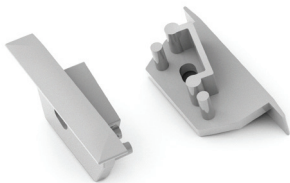
black anodized
czarny anodowany
schwarz eloxiert
noir anodisé



raw aluminium
surowe aluminium
Rohaluminium
aluminium brut

1000 mm	H5010001	H5010020	H5010021	H5010000
2000 mm	H5020001	H5020020	H5020021	H5020000
3000 mm	H5090001	H5090020	H5090021	H5090000
4050 mm	H5120001	H5120020	H5120021	H5120000

end cap DIAGONAL14 with hole
zaślepka DIAGONAL14 z otworem
Endkappe DIAGONAL14 mit Öffnung
embout DIAGONAL14 avec un trou



white
biały
weiß
blanc
H5999901

silver
srebrny
silbern
argent
H5999940

black
czarny
schwarz
noir
H5999902

grey
szary
grau
gris
H5999922

