

Technical manual  
Instrukcja techniczna  
Technische Anleitung  
Manuel technique



**Y**<sup>1</sup> → 208

mounting plate Y  
uchwyt Y  
Halter Y  
fixation Y

**Y**<sup>2</sup> → 208

mounting plate Y cone  
uchwyt Y cone  
Halter Y cone  
fixation Y cône

**T**<sup>1</sup> → 204

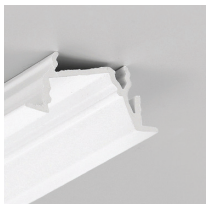
mounting plate T  
uchwyt T  
Halter T  
fixation T

**T**<sup>2</sup> → 204

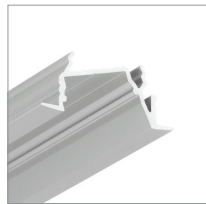
connector T 180 deg  
łącznik T 180 st  
Verbinder T 180 Grad  
connecteur T 180 degrés

**F** → 199

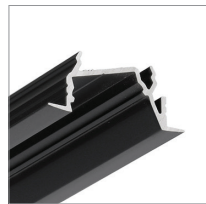
diffuser F click  
klosz F klik  
Abdeckung F einclipsbar  
diffuseur F clic



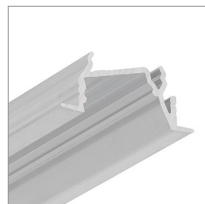
white painted  
biały malowany  
weiß lackiert  
peint en blanc



anodized  
anodowany  
eloxiert  
surface anodisée



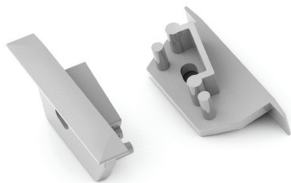
black anodized  
czarny anodowany  
schwarz eloxiert  
noir anodisé



raw aluminium  
surowe aluminium  
Rohaluminium  
aluminium brut

1000 mm	<b>H5010001</b>	<b>H5010020</b>	<b>H5010021</b>	<b>H5010000</b>
2000 mm	<b>H5020001</b>	<b>H5020020</b>	<b>H5020021</b>	<b>H5020000</b>
3000 mm	<b>H5090001</b>	<b>H5090020</b>	<b>H5090021</b>	<b>H5090000</b>
4050 mm	<b>H5120001</b>	<b>H5120020</b>	<b>H5120021</b>	<b>H5120000</b>

end cap DIAGONAL14 with hole  
zaślepka DIAGONAL14 z otworem  
Endkappe DIAGONAL14 mit Öffnung  
embout DIAGONAL14 avec un trou



white  
biały  
weiß  
blanc  
**H5999901**

silver  
srebrny  
silbern  
argent  
**H5999940**

black  
czarny  
schwarz  
noir  
**H5999902**

grey  
szary  
grau  
gris  
**H5999922**

