



Stainless Steel-Distance bushings

for mounting indexing plungers /
cam action indexing plungers

SPECIFICATION

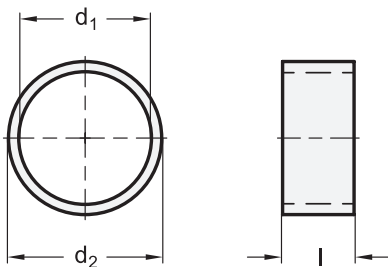
Stainless Steel AISI 303

INFORMATION

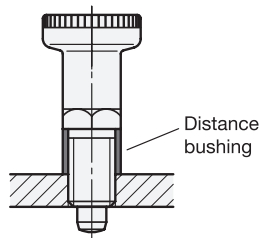
Stainless Steel-Distance bushings GN 609.5 compensate for the body thread lengths on the indexing plungers and cam action indexing plungers a to allow mounting through walls of varying thickness.

TECHNICAL INFORMATION

- ISO-Fundamental Tolerances (see page A21)
- Stainless Steel characteristics (see page A26)



Application example





GN 609.5

STAINLESS STEEL

Description	d1 H12	d2 -0.1 ±0.1	l ±0.1	For thread Ø	For indexing plungers		⚖
GN 609.5-6-7-2	6	7	2	M 6		GN 717	1
GN 609.5-6-7-4	6	7	4	M 6		GN 717	1
GN 609.5-6-7-6	6	7	6	M 6		GN 717	1
GN 609.5-6-7-8	6	7	8	M 6		GN 717	1
GN 609.5-8-10-2	8	10	2	M 8		GN 717 / GN 817 / GN 817.2 / GN 822	1
GN 609.5-8-10-4	8	10	4	M 8		GN 717 / GN 817 / GN 817.2 / GN 822	1
GN 609.5-8-10-6	8	10	6	M 8		GN 717 / GN 817 / GN 817.2 / GN 822	1
GN 609.5-8-10-8	8	10	8	M 8		GN 717 / GN 817 / GN 817.2 / GN 822	2
GN 609.5-8-10-10	8	10	10	M 8		GN 717 / GN 817 / GN 817.2 / GN 822	3
GN 609.5-10-12-2	10	12	2	M 10		GN 617 .1 .2 / GN 717 / GN 817 .2 / GN 822 .1 .6 .7	1
GN 609.5-10-12-4	10	12	4	M 10		GN 617 .1 .2 / GN 717 / GN 817 .2 / GN 822 .1 .6 .7	2
GN 609.5-10-12-6	10	12	6	M 10		GN 617 .1 .2 / GN 717 / GN 817 .2 / GN 822 .1 .6 .7	2
GN 609.5-10-12-8	10	12	8	M 10		GN 617 .1 .2 / GN 717 / GN 817 .2 / GN 822 .1 .6 .7	2
GN 609.5-10-12-10	10	12	10	M 10		GN 617 .1 .2 / GN 717 / GN 817 .2 / GN 822 .1 .6 .7	3
GN 609.5-10-12-12	10	12	12	M 10		GN 617 .1 .2 / GN 717 / GN 817 .2 / GN 822 .1 .6 .7	3
GN 609.5-12-14-2	12	14	2	M 12		GN 617 .1 .2 / GN 717 / PMT.200 / GN 816 .1 / GN 817 .2 .4 .8 / GN 514 / GN 612.8 / GN 822 .1 .6 .7	1
GN 609.5-12-14-4	12	14	4	M 12		GN 617 .1 .2 / GN 717 / PMT.200 / GN 816 .1 / GN 817 .2 .4 .8 / GN 514 / GN 612.8 / GN 822 .1 .6 .7	1
GN 609.5-12-14-6	12	14	6	M 12		GN 617 .1 .2 / GN 717 / PMT.200 / GN 816 .1 / GN 817 .2 .4 .8 / GN 514 / GN 612.8 / GN 822 .1 .6 .7	2
GN 609.5-12-14-8	12	14	8	M 12		GN 617 .1 .2 / GN 717 / PMT.200 / GN 816 .1 / GN 817 .2 .4 .8 / GN 514 / GN 612.8 / GN 822 .1 .6 .7	2
GN 609.5-12-14-10	12	14	10	M 12		GN 617 .1 .2 / GN 717 / PMT.200 / GN 816 .1 / GN 817 .2 .4 .8 / GN 514 / GN 612.8 / GN 822 .1 .6 .7	2
GN 609.5-12-14-12	12	14	12	M 12		GN 617 .1 .2 / GN 717 / PMT.200 / GN 816 .1 / GN 817 .2 .4 .8 / GN 514 / GN 612.8 / GN 822 .1 .6 .7	4
GN 609.5-12-14-14	12	14	14	M 12		GN 617 .1 .2 / GN 717 / PMT.200 / GN 816 .1 / GN 817 .2 .4 .8 / GN 514 / GN 612.8 / GN 822 .1 .6 .7	4
GN 609.5-12-17-2	12	17	2	M 12		GN 414 .1 / GN 607 .1	2
GN 609.5-12-17-4	12	17	4	M 12		GN 414 .1 / GN 607 .1	3
GN 609.5-12-17-5	12	17	5	M 12		GN 414 .1 / GN 607 .1	4
GN 609.5-12-17-6	12	17	6	M 12		GN 414 .1 / GN 607 .1	6
GN 609.5-12-17-8	12	17	8	M 12		GN 414 .1 / GN 607 .1	7
GN 609.5-12-17-10	12	17	10	M 12		GN 414 .1 / GN 607 .1	8
GN 609.5-12-17-12	12	17	12	M 12		GN 414 .1 / GN 607 .1	10
GN 609.5-16-17-2	16	17	2	M 16		GN 514 / GN 717 / GN 816 .1 / GN 817 .2 .4 .6 .8 / GN 822 .1 .6 .7 .8	1
GN 609.5-16-17-4	16	17	4	M 16		GN 514 / GN 717 / GN 816 .1 / GN 817 .2 .4 .6 .8 / GN 822 .1 .6 .7 .8	1
GN 609.5-16-17-6	16	17	6	M 16		GN 514 / GN 717 / GN 816 .1 / GN 817 .2 .4 .6 .8 / GN 822 .1 .6 .7 .8	1
GN 609.5-16-17-8	16	17	8	M 16		GN 514 / GN 717 / GN 816 .1 / GN 817 .2 .4 .6 .8 / GN 822 .1 .6 .7 .8	1
GN 609.5-16-17-10	16	17	10	M 16		GN 514 / GN 717 / GN 816 .1 / GN 817 .2 .4 .6 .8 / GN 822 .1 .6 .7 .8	2
GN 609.5-16-17-12	16	17	12	M 16		GN 514 / GN 717 / GN 816 .1 / GN 817 .2 .4 .6 .8 / GN 822 .1 .6 .7 .8	2
GN 609.5-16-19-2	16	19	2	M 16		GN 414 .1 / GN 607 .1 / GN 612.8 / PMT.200 / GN 617 .1 .2 / GN 7336.8	1
GN 609.5-16-19-4	16	19	4	M 16		GN 414 .1 / GN 607 .1 / GN 612.8 / PMT.200 / GN 617 .1 .2 / GN 7336.8	2
GN 609.5-16-19-6	16	19	6	M 16		GN 414 .1 / GN 607 .1 / GN 612.8 / PMT.200 / GN 617 .1 .2 / GN 7336.8	4
GN 609.5-16-19-8	16	19	8	M 16		GN 414 .1 / GN 607 .1 / GN 612.8 / PMT.200 / GN 617 .1 .2 / GN 7336.8	5
GN 609.5-16-19-10	16	19	10	M 16		GN 414 .1 / GN 607 .1 / GN 612.8 / PMT.200 / GN 617 .1 .2 / GN 7336.8	6
GN 609.5-16-19-12	16	19	12	M 16		GN 414 .1 / GN 607 .1 / GN 612.8 / PMT.200 / GN 617 .1 .2 / GN 7336.8	7
GN 609.5-20-22-6	20	22	6	M 20		GN 612.8 / GN 617 .1 .2 / GN 817 .2 .4 .6 .8	3
GN 609.5-20-22-8	20	22	8	M 20		GN 612.8 / GN 617 .1 .2 / GN 817 .2 .4 .6 .8	4
GN 609.5-20-22-10	20	22	10	M 20		GN 612.8 / GN 617 .1 .2 / GN 817 .2 .4 .6 .8	5
GN 609.5-20-22-12	20	22	12	M 20		GN 612.8 / GN 617 .1 .2 / GN 817 .2 .4 .6 .8	6
GN 609.5-20-22-14	20	22	14	M 20		GN 612.8 / GN 617 .1 .2 / GN 817 .2 .4 .6 .8	7
GN 609.5-20-22-16	20	22	16	M 20		GN 612.8 / GN 617 .1 .2 / GN 817 .2 .4 .6 .8	9
GN 609.5-20-22-18	20	22	16	M 20		GN 612.8 / GN 617 .1 .2 / GN 817 .2 .4 .6 .8	9

8 Indexing elements