

**Product number FS15786_FLORENCE-3R-IP-Z60**

Family	Florence	FWHM	60 degrees
Type	Assembly	Efficiency	86 %
LED	LG 6030	cd/lm	0.720
Color	Clear	Gerber File	Available
Diameter	321 + 79 mm		
Height	10.5 mm		
Style	Rectang		
Optic Material	PC		
Holder Material	-		
Fastening	""		
Status	Production ready		

Product number FS15847_FLORENCE-3R-IP-O

Family	Florence	FWHM	84+40 degrees
Type	Assembly	Efficiency	86 %
LED	LG 6030	cd/lm	0.680
Color	Clear	Gerber File	Available
Diameter	321 + 79 mm		
Height	-		
Style	Rectang		
Optic Material	Silicone,PC		
Holder Material	-		
Fastening	""		
Status	Production ready		

Product number FS15626_FLORENCE-3R-IP-Z90

Family	Florence	FWHM	90 degrees
Type	Assembly	Efficiency	89 %
LED	LG 6030	cd/lm	0.440
Color	Clear	Gerber File	Available
Diameter	321 + 79 mm		
Height	9.72 mm		
Style	Rectang		
Optic Material	PC,Silicone		
Holder Material	-		
Fastening	""		
Status	Production ready		

NOTE: The typical divergence will be changed by different color, chip size and chip position tolerance. The typical total divergence is the full angle measured where the luminous intensity is half of the peak value.



PRODUCT DATASHEET

Florence series

last update 20/4/2017

GENERAL INFORMATION

- Product series especially designed & optimized for LG 6030 series of LEDs.
- Special care taken to make light distribution as uniform as possible.
- Lens material optical grade PC with high UV and temperature resistance (100 degrees of Celcius / 212 degrees of Fahrenheit). Allows use of high current and temperature conditions.

Please find more information about used materials from below:

http://ledil.fi/sites/default/files/Documents/Technical/Material/PC%20Makrolon%202400_2407_2456_2458-UL.pdf

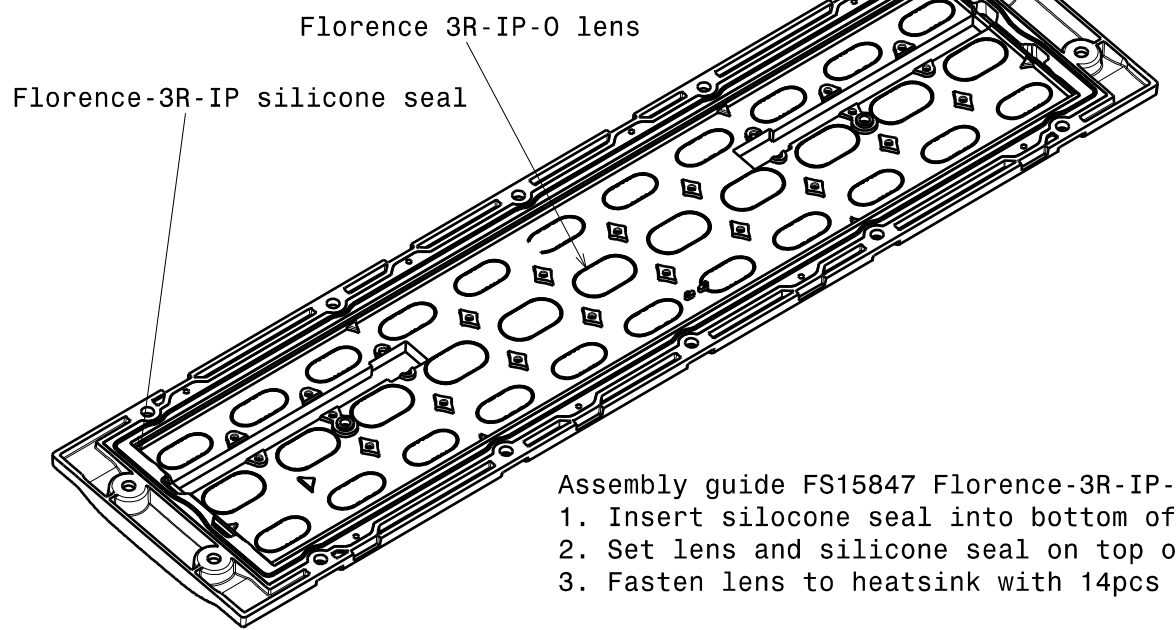
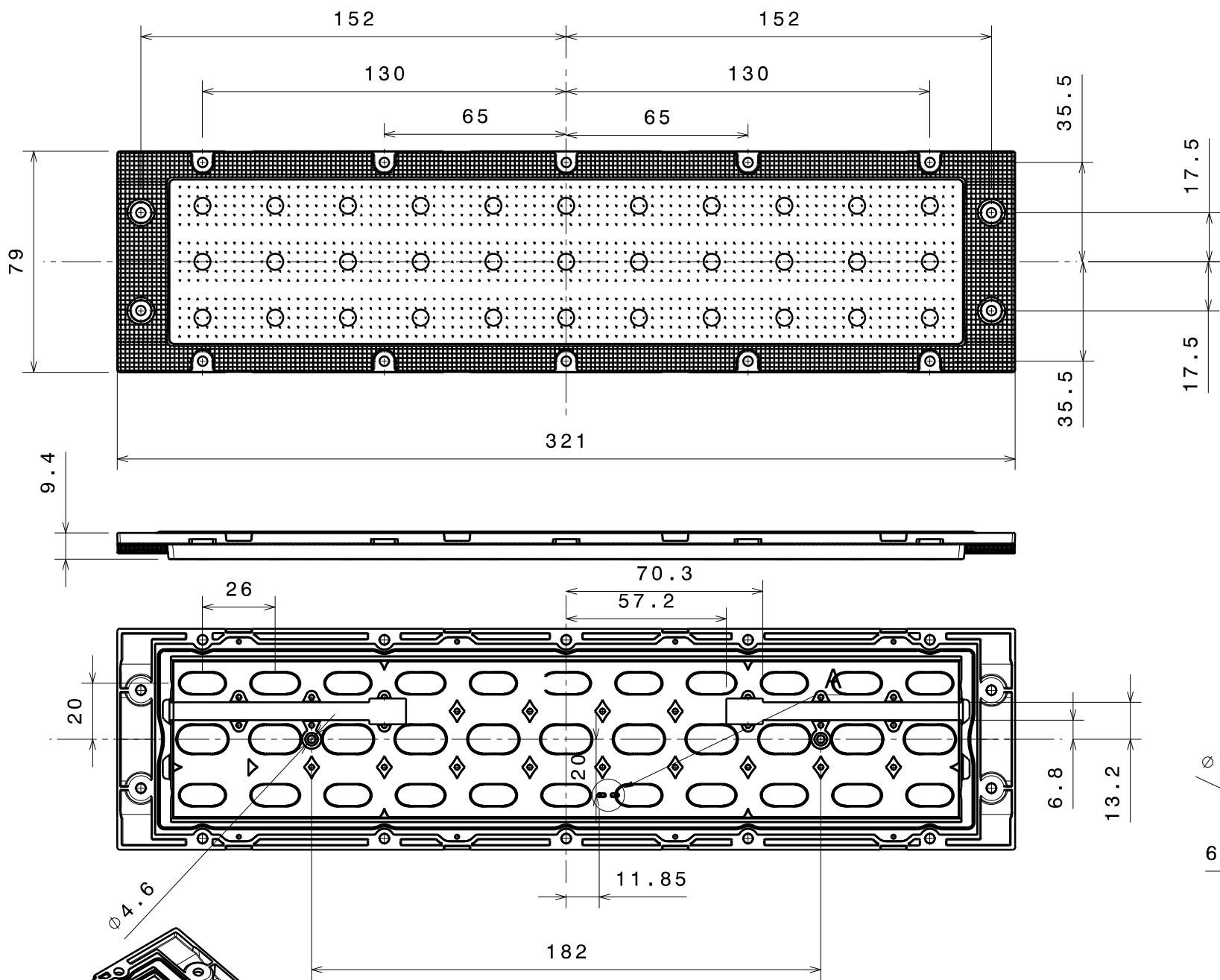
H G F E D C B A

4

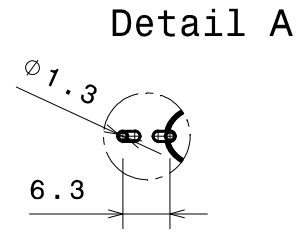
3

2

1



Assembly guide FS15847 Florence-3R-IP-0:
 1. Insert silicone seal into bottom of Florence-3R-IP-0 lens
 2. Set lens and silicone seal on top of PCB
 3. Fasten lens to heatsink with 14pcs of M3 screws
 Screw type DIN 7985 M3, Max torque 0.6Nm



INDEX	PART NO	DESCRIPTION	MATERIAL	COLOUR
1	F15625	FLORENCE-3R-IP-Seal	Silicone	
2	F15675	FLORENCE-3R-IP-0	PC	

Tolerances if not otherwise shown
 According to DIN ISO 2768-1
 Linear measures:
 Up to 30mm class M, otherwise class C.
 According to DIN ISO 2768-2
 Form and position: class L

THIRD ANGLE PROJECTION:

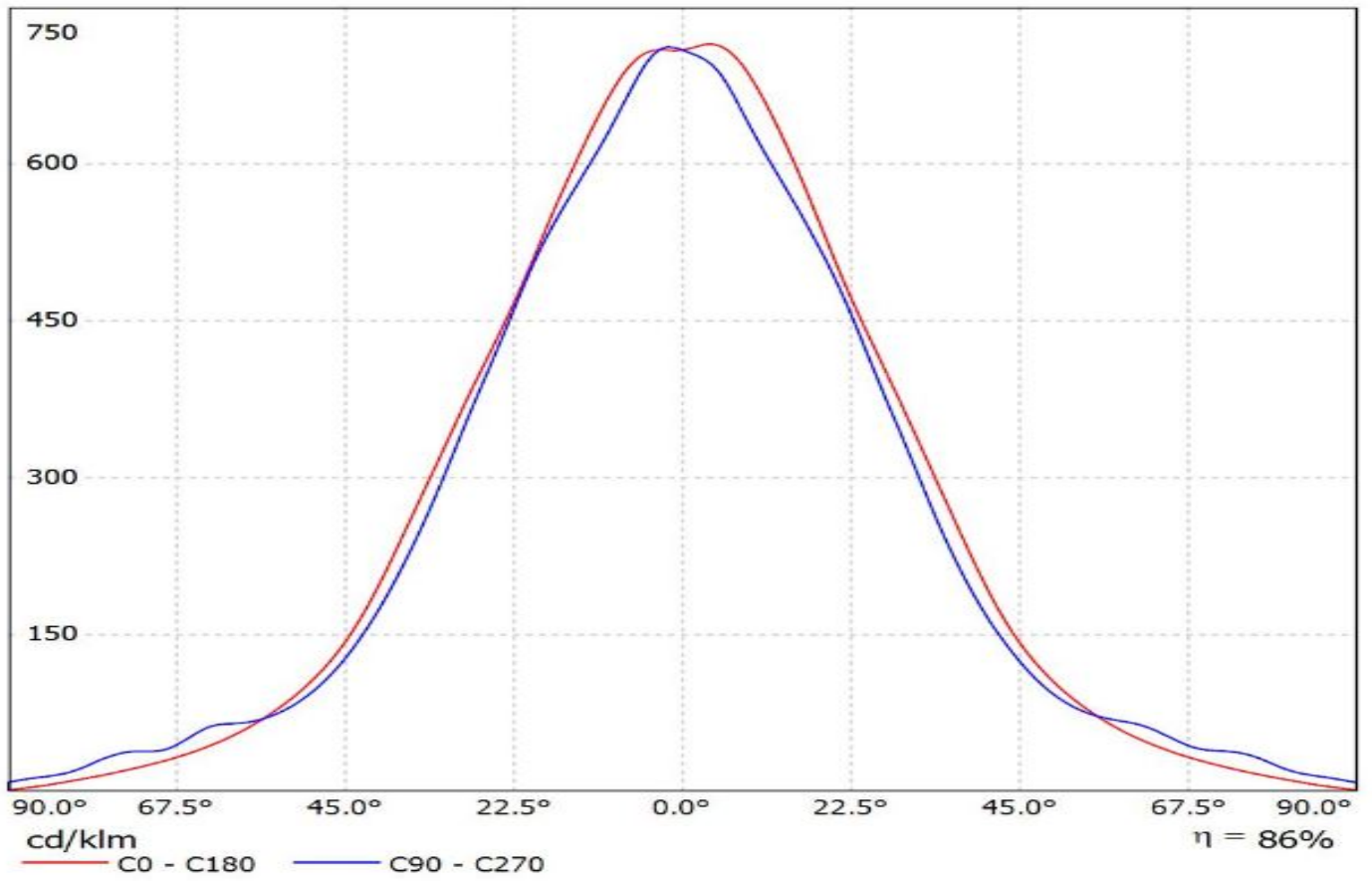
This drawing is the property of LEDiL Oy. It may not be reproduced, copied or communicated without a written agreement with LEDiL Oy.

Ledil Oy Salorankatu 10 FIN 24240 SALO Finland	DRAWING TITLE	
	FS15827_Florence-3R-IP-0_Mechanical_drawing	
SIZE	PART NUMBER	
A3	FS15827	
SCALE	1:1	WEIGHT
		g
SHEET		1/1

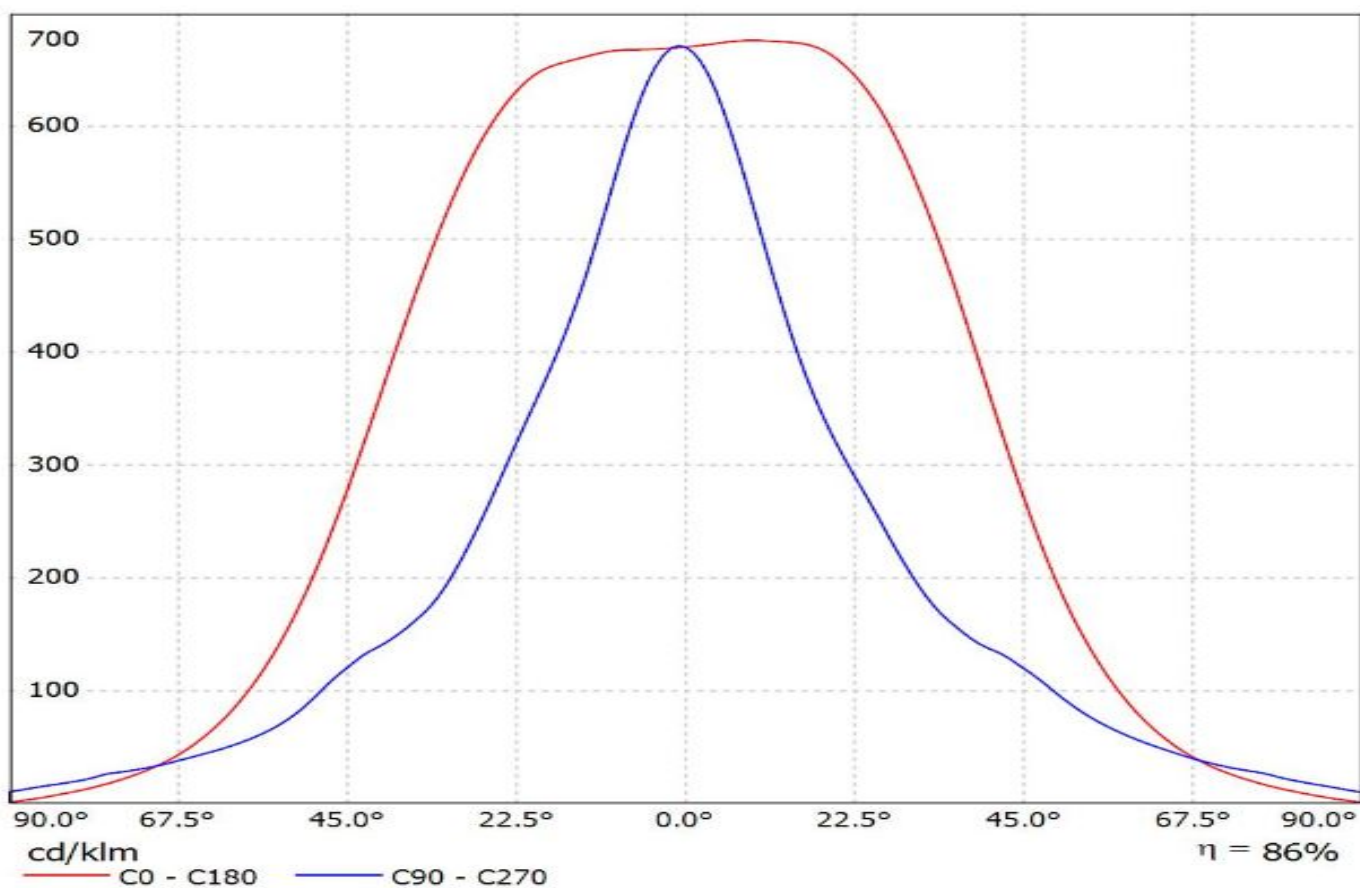
H G F E D C B A

Luminaire: Ledil FS15786_FLORENCE-3R-IP-Z60_(LG-6030)_Cav1

Lamps: 1 x LG-6030_(LEWMS68T80HZ)_1073.53lm@250mA_cct=5000K_P=7.9555W_I=0.25A

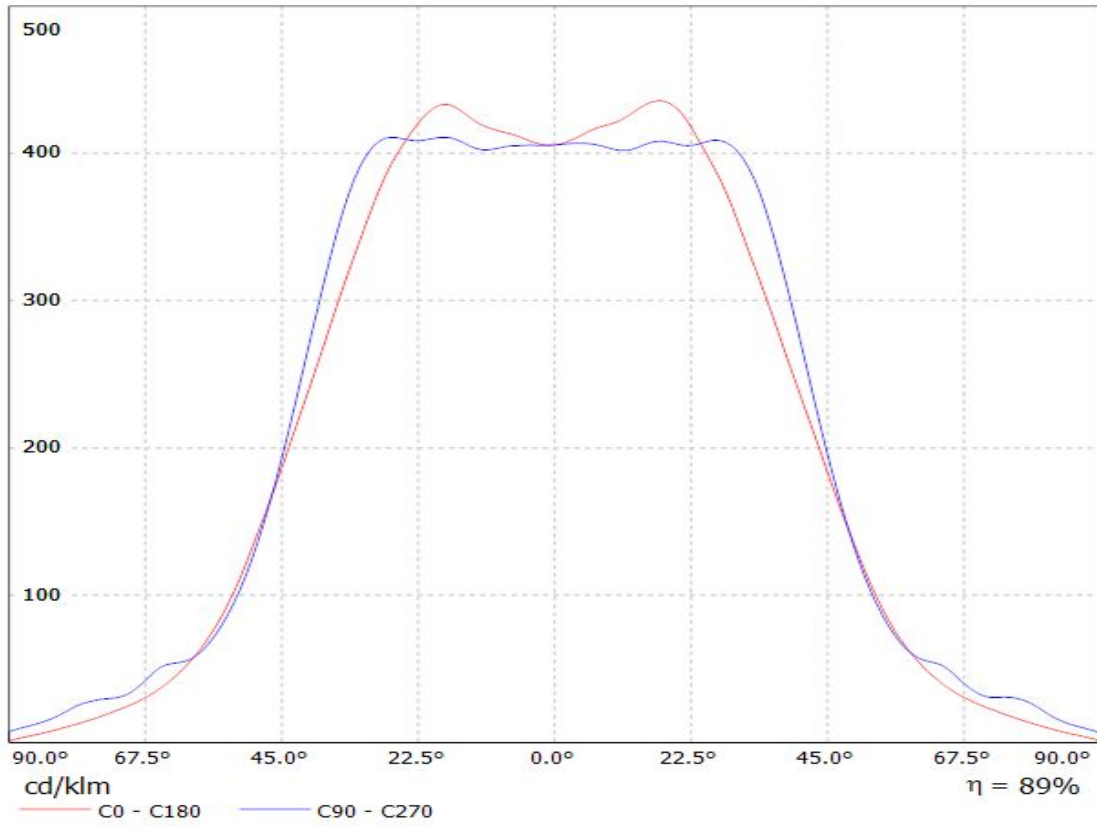


Luminaire: Ledil FS15847_FLORENCE-3R-IP-O_(LG-6030)_Cav1
Lamps: 1 x LG-6030_(LEWMS68T80HZ)_1073.53lm@250mA_cct=5000K_P=7.9555W_I=0.25A



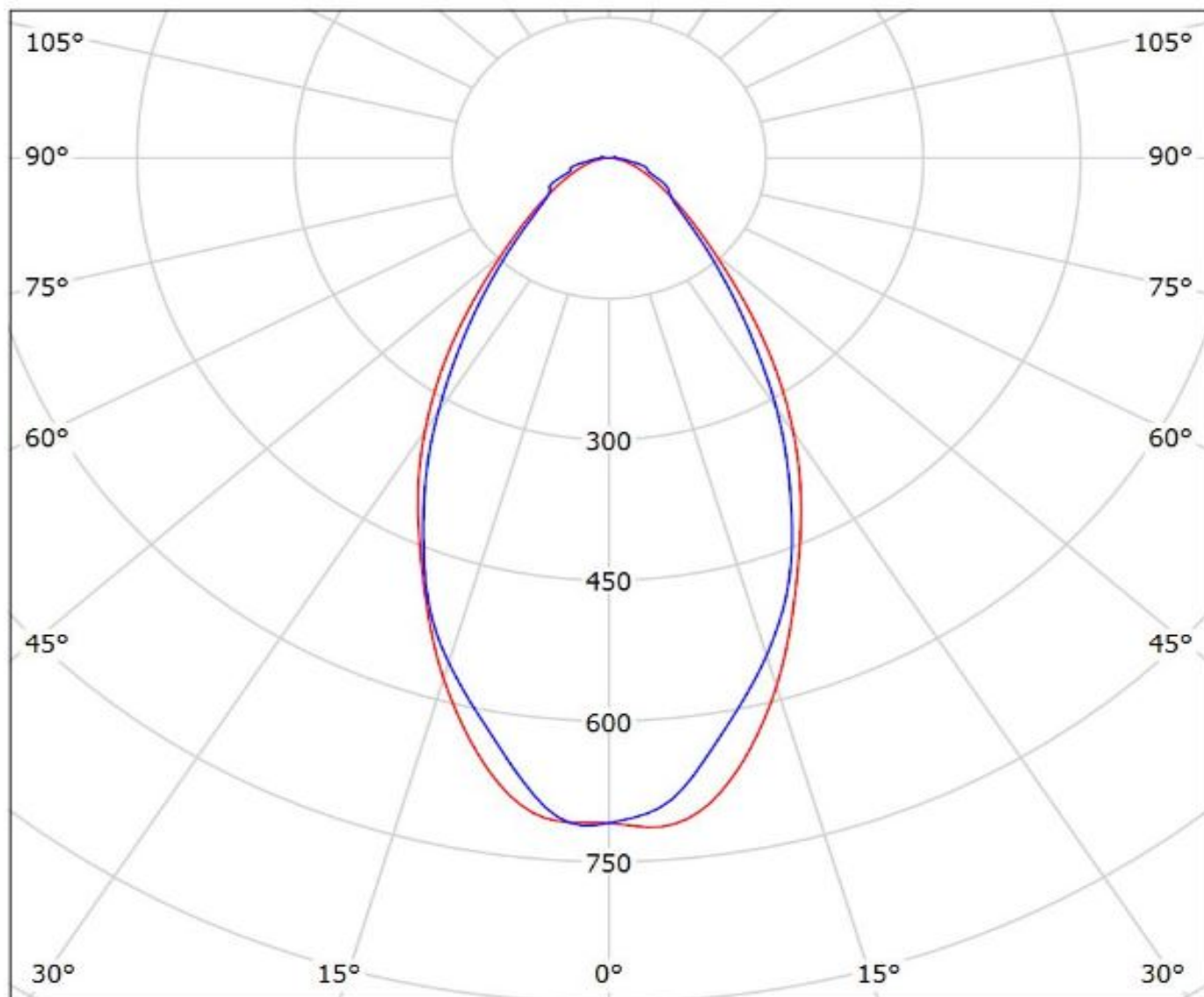
Luminaire: LEDiL Oy FS15626_FLORENCE-3R-IP-Z90_(LG_6030)

Lamps: 1 x Philips_Fortimo_LED_Line_1ft_1100lm_840_3R_HV2_(LG_6030)_1043.51lm@250mA_P=7.9259W_I=0.25A



Luminaire: Ledil FS15786_FLORENCE-3R-IP-Z60_(LG-6030)_Cav1

Lamps: 1 x LG-6030_(LEWMS68T80HZ)_1073.53lm@250mA_cct=5000K_P=7.9555W_I=0.25A



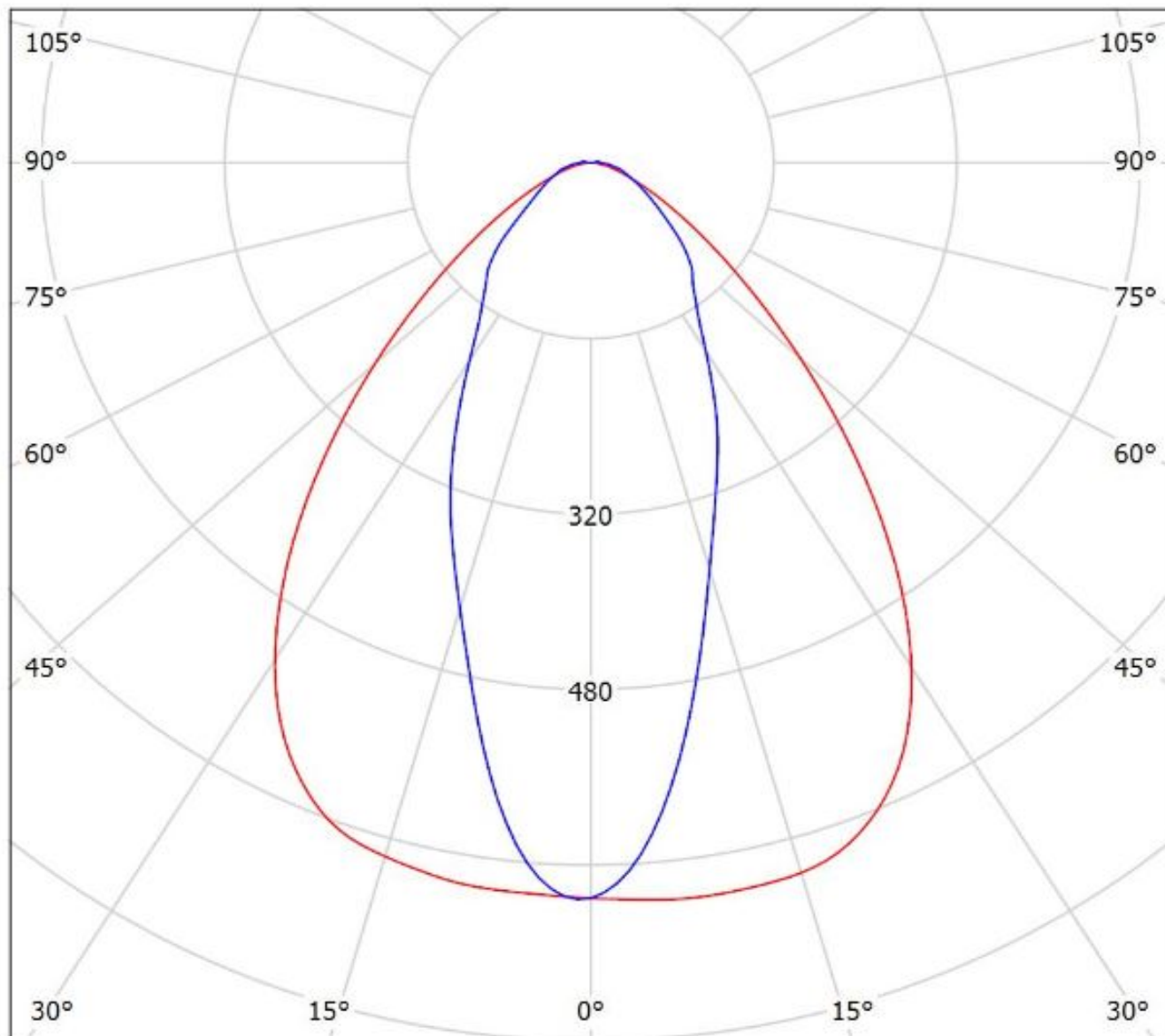
cd/klm

— C0 - C180 — C90 - C270

$\eta = 86\%$

Luminaire: Ledil FS15847_FLORENCE-3R-IP-O_(LG-6030)_Cav1

Lamps: 1 x LG-6030_(LEWMS68T80HZ)_1073.53lm@250mA_cct=5000K_P=7.9555W_I=0.25A



cd/klm

— C0 - C180 — C90 - C270

$\eta = 86\%$

Luminaire: LEDiL Oy FS15626_FLORENCE-3R-IP-Z90_(LG_6030)

Lamps: 1 x Philips_Fortimo_LED_Line_1ft_1100lm_840_3R_HV2_(LG_6030)_1043.51lm@250mA_P=7.9259W_I=0.25A

