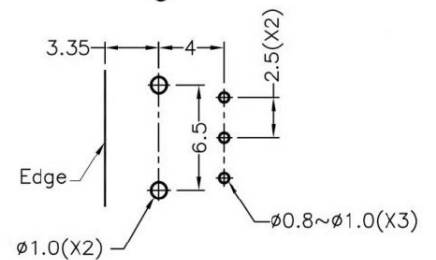
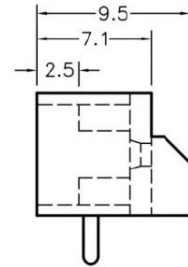
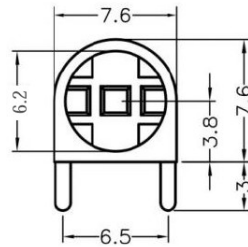


LEK-501

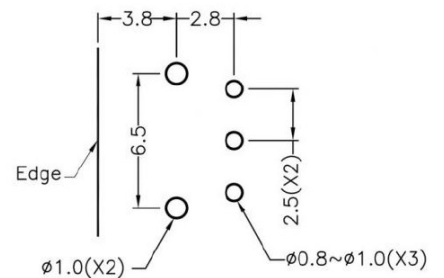
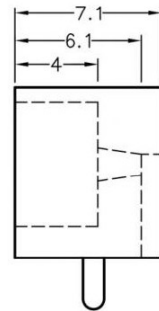
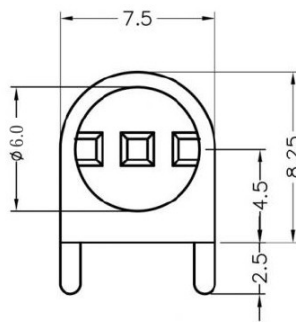
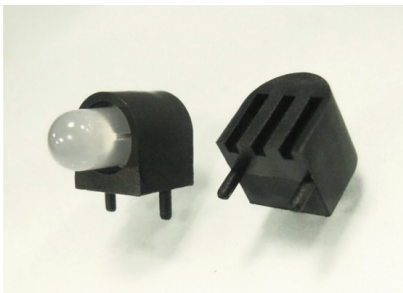


MOUNTING HOLE

MATERIAL: NYLON 66(UL)
 FLAME CLASS: 94V-2
 COLOR:BLACK
 UNIT:mm
 RECOMMEND ASSEMBLING LED SIZE : 5
 NUMBER OF ASSEMBLING LED : 1

To weld $\phi 5$ 3PIN LED on board 90 degrees, with same height, and indexing pins, but avoid crooked.

LEK-503

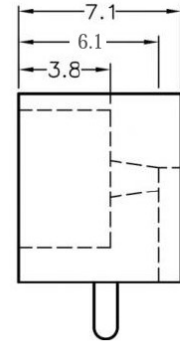
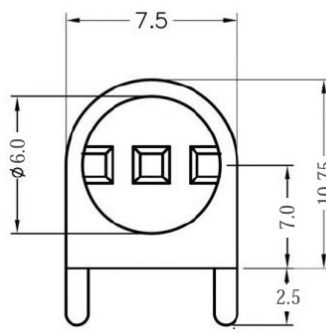


MOUNTING HOLE

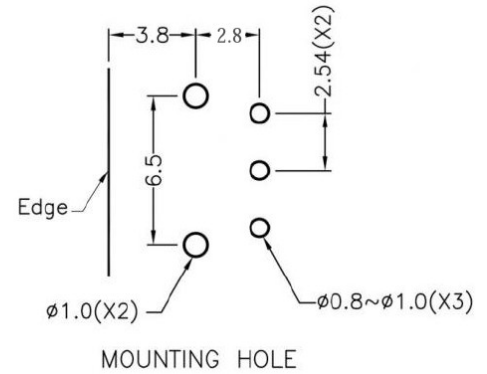
FLAME CLASS: 94V-2
 COLOR:BLACK
 UNIT:mm
 RECOMMEND ASSEMBLING LED SIZE : 5
 NUMBER OF ASSEMBLING LED : 1

To weld $\phi 5$ 3PIN LED on board 90 degrees, with same height, and indexing pins, but avoid crooked.

FIX-LEK-503-7

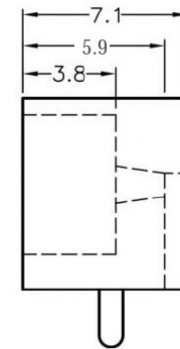
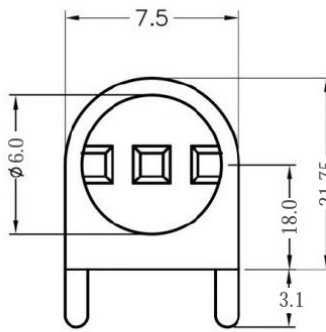


MATERIAL: NYLON 66(UL)
 FLAME CLASS: 94V-2
 COLOR:BLACK
 UNIT:mm
 RECOMMEND ASSEMBLING LED SIZE : 5
 NUMBER OF ASSEMBLING LED : 1

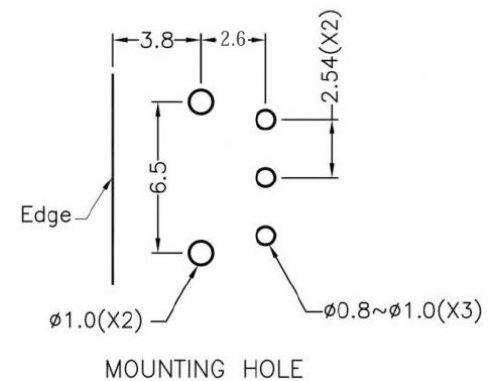


To weld $\phi 5$ 3PIN LED on board 90 degrees, with same height, and indexing pins, but avoid crooked.

FIX-LEK-503-18



MATERIAL: NYLON 66(UL)
 FLAME CLASS: 94V-2
 COLOR:BLACK
 UNIT:mm
 RECOMMEND ASSEMBLING LED SIZE : 5
 NUMBER OF ASSEMBLING LED : 1

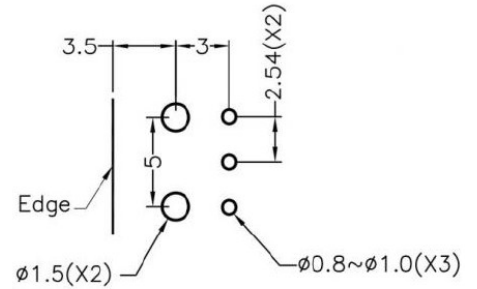
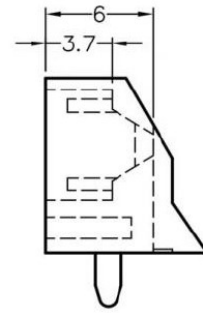
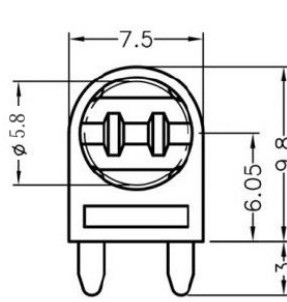


To weld $\phi 5$ 3PIN LED on board 90 degrees, with same height, and indexing pins, but avoid crooked.

FIX-LEK-505



MATERIAL: NYLON 66(UL)
 FLAME CLASS: 94V-2
 COLOR:BLACK
 UNIT:mm
 RECOMMEND ASSEMBLING LED SIZE : 5
 NUMBER OF ASSEMBLING LED : 1



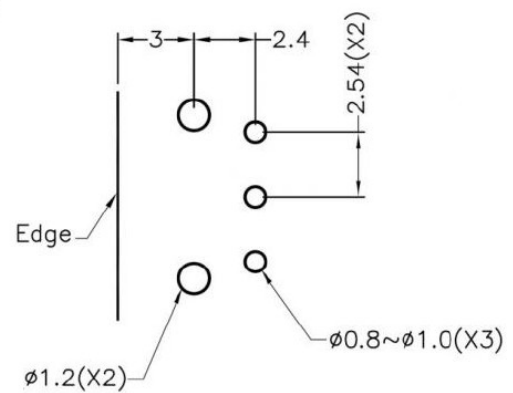
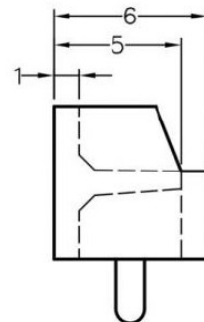
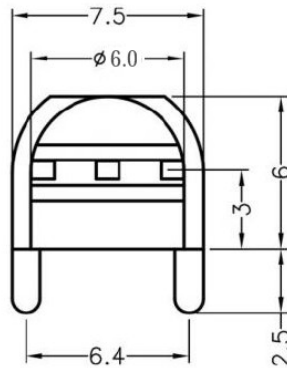
MOUNTING HOLE

To weld $\phi 5$ 3PIN LED on board 90 degrees, with same height, and indexing pins, but avoid crooked.

FIX-LEK-508



MATERIAL: NYLON 66(UL)
 FLAME CLASS: 94V-2
 COLOR:BLACK
 UNIT:mm
 RECOMMEND ASSEMBLING LED SIZE : 5
 NUMBER OF ASSEMBLING LED : 1



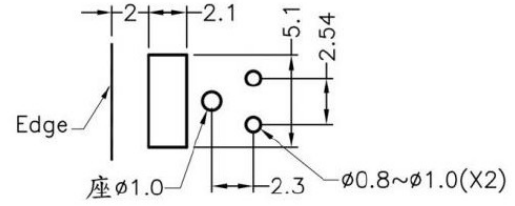
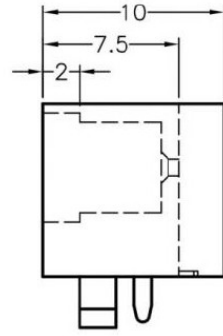
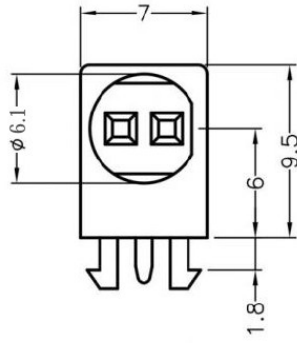
MOUNTING HOLE

To weld $\phi 5$ 3PIN LED on board 90 degrees, with same height, and indexing pins, but avoid crooked.

FIX-LEK-506



MATERIAL: NYLON 66(UL)
FLAME CLASS: 94V-2
COLOR:BLACK
UNIT:mm
RECOMMEND ASSEMBLING LED SIZE : 5
NUMBER OF ASSEMBLING LED : 1



MOUNTING HOLE

To weld $\phi 5$ LED on board 90 degrees, with same height, and indexing pins, but avoid crooked.