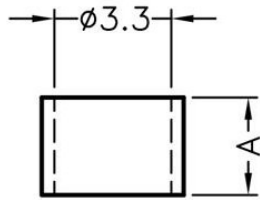
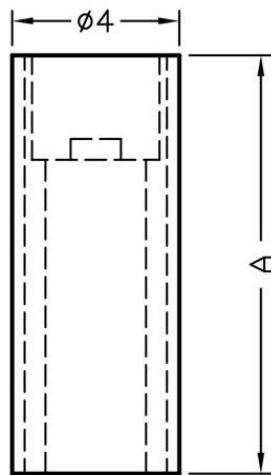
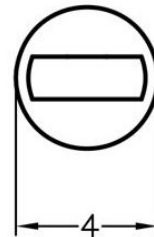


**FIX-LEDS**

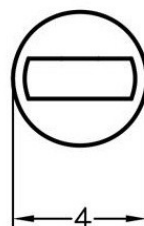
MATERIAL: NYLON 66(UL)  
 FLAME CLASS: 94V-2  
 COLOR:NATURAL  
 UNIT:mm



FOR:LEDS-0.8~LEDS-3.5



FOR:LEDS-XX



<b>PART NO</b>	<b>A</b>
FIX-LEDS-0.8	0,8
FIX-LEDS-1	1
FIX-LEDS-1.5	1,5
FIX-LEDS-2	2
FIX-LEDS-2.5	2,5
FIX-LEDS-3	3
FIX-LEDS-3.5	3,5
FIX-LEDS-4	4
FIX-LEDS-4.5	4,5
FIX-LEDS-5	5
FIX-LEDS-5.5	5,5
FIX-LEDS-6	6
FIX-LEDS-6.5	6,5
FIX-LEDS-7	7
FIX-LEDS-7.5	7,5
FIX-LEDS-8	8
FIX-LEDS-8.5	8,5
FIX-LEDS-9	9
FIX-LEDS-9.5	9,5
FIX-LEDS-10	10
FIX-LEDS-10.5	10,5
FIX-LEDS-11	11
FIX-LEDS-11.5	11,5
FIX-LEDS-12	12
FIX-LEDS-12.5	12,5
FIX-LEDS-13	13
FIX-LEDS-13.5	13,5
FIX-LEDS-14	14
FIX-LEDS-14.5	14,5
FIX-LEDS-15	15
FIX-LEDS-15.5	15,5
FIX-LEDS-16	16
FIX-LEDS-16.5	16,5
FIX-LEDS-17	17
FIX-LEDS-17.5	17,5
FIX-LEDS-18	18
FIX-LEDS-18.5	18,5

FIX-LEDS-19	19
FIX-LEDS-19.5	19,5
FIX-LEDS-20	20
FIX-LEDS-20.5	20,5
FIX-LEDS-21	21
FIX-LEDS-21.5	21,5
FIX-LEDS-22	22
FIX-LEDS-22.5	22,5
FIX-LEDS-23	23
FIX-LEDS-23.5	23,5
FIX-LEDS-24	24

