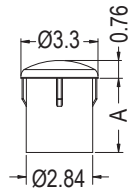


LED 導光柱 LIGHT PIPE

用途：置LED導光於機殼面板上，使光度均勻、柔和。

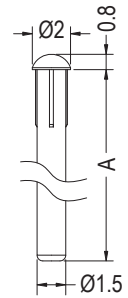


- Material: PC (UL)
- Flame Class: 94V-2/94V-0
- Color: Transparent
- Unit: mm



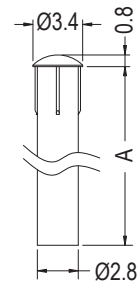
MOUNTING HOLE: ØG

Part No.	A	G	Package
★EMP2-3.2	3.2	3.0	2000
EMP2-4	4.0	3.05	
★EMP2-4.8	4.8	3.0	
EMP2-5	5.0	3.0	
EMP2-6	6.0	3.0	
EMP2-7	7.0	3.0	
EMP2-8	8.0	3.05	
★EMP2-9.5	9.5	3.0	
EMP2-10	10.0	3.0	
EMP2-25.4	25.4	3.05	
EMP2-30.5	30.5	3.0	



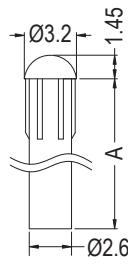
MOUNTING HOLE Ø1.55

Part No.	A	Package
LEM-132	20.0	2000
LEM-141	21.8	
LEM-193	29.2	
LEM-199	10.16	



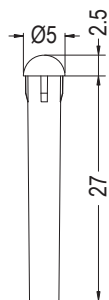
MOUNTING HOLE Ø3.0

Part No.	A	Package
LEM-87	18.0	2000
LEM-235-7.2	7.2	1000
LEM-235	12.2	



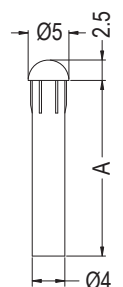
MOUNTING HOLE Ø3.0

Part No.	A	Package
LEM-67	6.0	2000
LEM-67-13	13.0	
LEM-67-17.5	17.5	
LEM-67-20.5	20.5	
LEM-67-27.5	27.5	1000



MOUNTING HOLE Ø4.4

Part No.	Package
★LEM-262M	1000



MOUNTING HOLE: ØG

Part No.	A	G	Package
LEM-53	21.55	4.3	2000
LEM-53-7	7.0	4.2	
LEM-53-8.5	8.5	4.2	
LEM-53-16.5	16.5	4.2	
LEM-53-19	19.0	4.2	
LEM-53-24	24.0	4.2	
LEM-191	43.5	4.3	1000
LEM-191-36	36.0	4.3	
LEM-191-37.5	37.5	4.3	
LEM-198	30.0	4.3	
LEM-202	54.0	4.3	