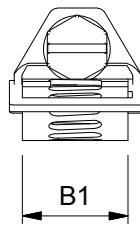
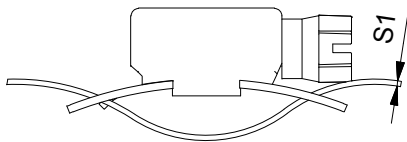
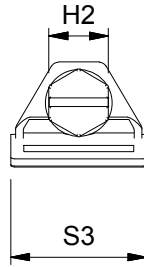
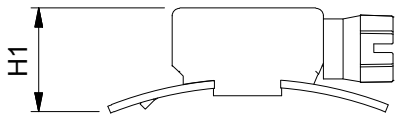
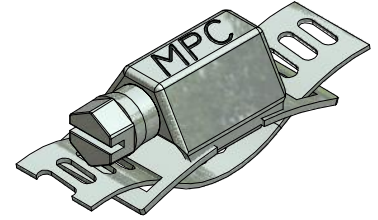
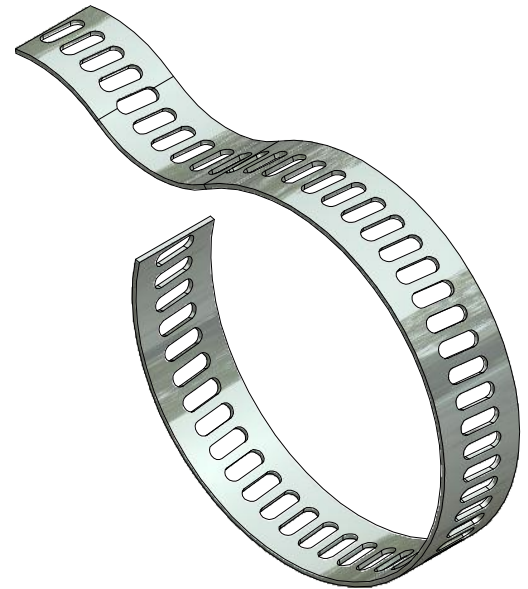


# MPC TYPE "EB"



Endless band

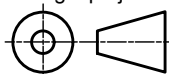


## SIZES

Clamping range	Band width	Band Thickness	Housing	Wormdrive	Screw	Free Torque:	Breaking Torque:
D	B1: $\pm 1$	S1: $\pm 0,5$	H1	H2	S3	FT	BT
>40	8	0,6	10 till 13	6	12	$\leq 1$ Nm	2,5 Nm
>50	14	0,7	12 till 16	8	17	$\leq 1$ Nm	5 Nm



Third angle projection:



Material:  
W2 ; W4

Part number:

## EB clamp

Description:

MPC Industries EB clamp

Revision:

Drawn by: gyula

Creation date: 5-3-2014

Scale 1:1

Units: mm

Format:

## A4