



DC COMPONENTS CO., LTD.

RECTIFIER SPECIALISTS

DB3
THRU
DB6

TECHNICAL SPECIFICATIONS OF BIDIRECTIONAL DIODE THYRISTORS (DIACS)

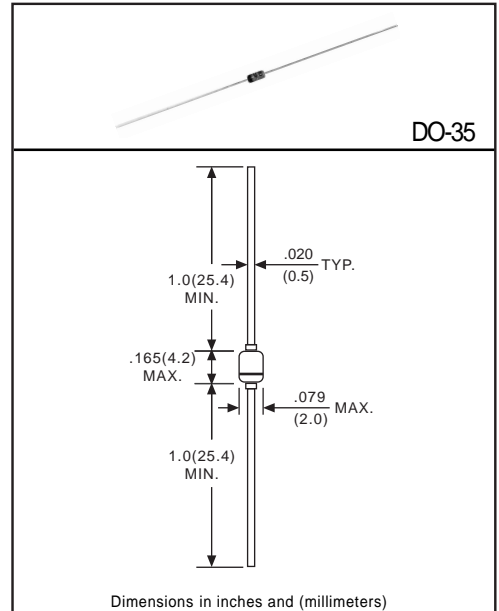
FEATURES

- * Glass passivated three-layer for triggering thyristors.
- * Low breakover current at breakover voltage.
- * For use in thyristor phase-control circuit for lampdimming, universal-motor speed control and heat controls.

MECHANICAL DATA

- * Case: Glass sealed case
- * Terminals: MIL-STD-202E, Method 208 guaranteed
- * Mounting position: Any
- * Weight: 0.15 gram Approx.

MAXIMUM RATINGS AND ELECTRICAL CHARACTERISTICS
 Rating at 25°C ambient temperature unless otherwise specified
 Single phase, half wave 60 HZ, resistive or inductive load.
 For capacitive load, derate current by 20%.



ABSOLUTE RATINGS(LIMITING VALUES)

PARAMETERS	SYMBOL	VALUE				UNITS
		DB3	DC34	DB4	DB6	
Power Dissipation on Printed Circuit (L=10mm) T _A =25°C	P _c	150				mW
Repetitive Peak on-state Current t _p =10μs f=100Hz	I _{TRM}	2.0		1.6		mA
Maximum Lead Temperature for Soldering	T _{STG} /T _J	-40 to +125				°C

ELECTRICAL CHARACTERISTICS

PARAMETERS	TEST CONDITIONS	SYMBOL	VALUE				UNITS
			DB3	DC34	DB4	DB6	
Breakover Voltage (Note 2)	C=22nF (Note 2) See FIG. 1	Min	28	30	35	56	Volts
		Typ	32	34	40	60	
		Max	36	38	45	70	
Breakover Voltage Symmetry	C=22nF (Note 2) See FIG. 1	Max	I+VBOI-I-VBOI		A 3	A 4	Volts
Dynamic Breakback Voltage (Note 1)	ΔI=(I _{BO} to I _F =10mA) See FIG. 1	Min	ΔV		5	10	Volts
Output Voltage (Note 1)	See FIG. 2	Min	V _O				Volts
Breakover Current (Note 1)	C=22nF (Note 2)	Max	I _{BO}				μA
Rise time (Note 1)	See FIG. 3	Typ	t _r				μs
Leakage Current (Note 1)	V _B =0.5 V _{BO} max See FIG. 1	Max	I _B				μA

NOTE: 1. Electrical characteristics applicable in both forward and reverse directions.
 2. Connected in parallel with the devices.

RATING AND CHARACTERISTIC CURVES (DB3 THRU DB6)

FIG.1 - VOLTAGE-CURRENT CHARACTERISTICS

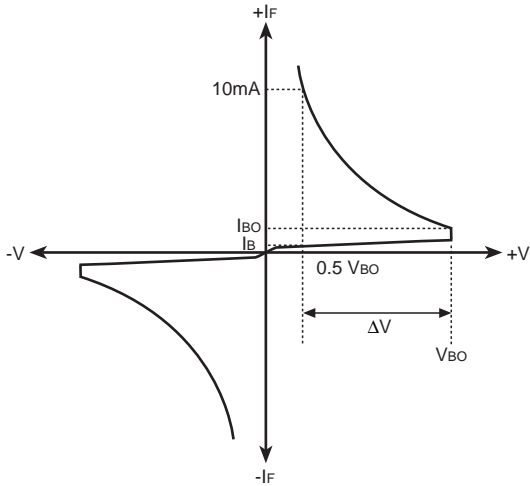


FIG.2 - TEST CIRCUIT FOR OUTPUT VOLTAGE

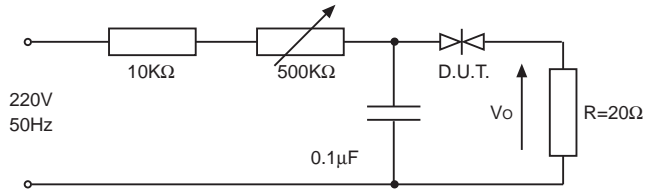


FIG.3 - TEST CIRCUIT SEE FIG.2 ADJUST R FOR $I_P=0.5\text{A}$

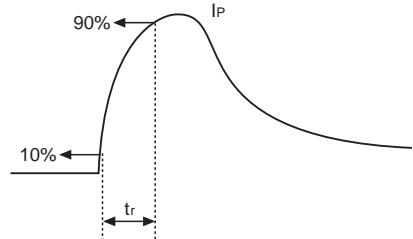


FIG.4 - REPETITIVE PEAK ON-STATE CURRENT VS PULSE DURATION

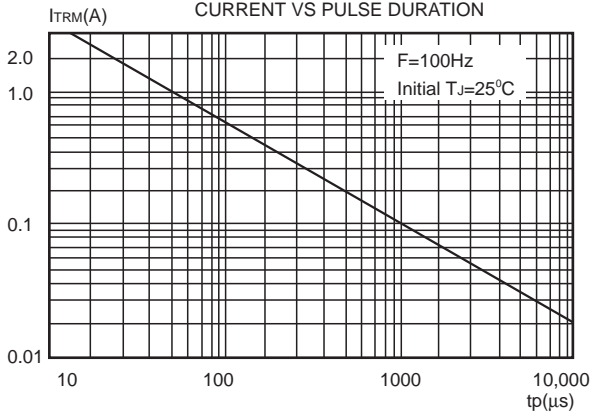


FIG.5 - REPETITIVE PEAK ON-STATE CURRENT VS PULSE DURATION

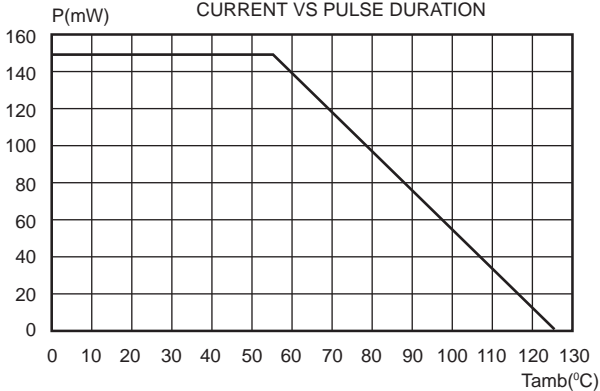
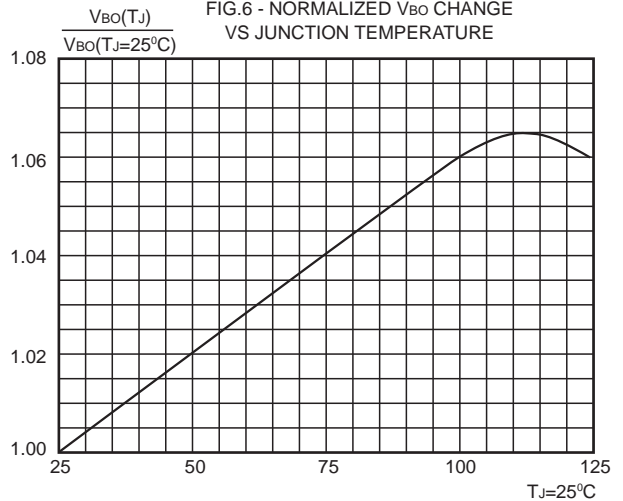


FIG.6 - NORMALIZED V_{Bo} CHANGE VS JUNCTION TEMPERATURE



Disclaimer

Any Customer or user of this document or products described herein in such applications shall assume all risks of such use and will agree to hold *DC COMPONENTS* harmless against all damages.

DC COMPONENTS disclaims any and all liability arising out of the application or use of any product, including consequential or incidental damages. Statement regarding the suitability of products for certain types of applications are based on *DC COMPONENTS*'s knowledge of typical requirements that are often placed on *DC COMPONENTS* products in generic applications. Such statements are not binding statements about the suitability of products for a particular application. It is the customer's responsibility to validate that a particular product with the properties described in the product specification is suitable for use in a particular application.

DC COMPONENTS reserve the right to make modifications, enhancements, improvements, corrections or other changes without further notice to this document and any product described herein, and disclaim any and all liability for any errors, inaccuracies or incompleteness contained in any datasheet or in any other disclosure relating to any product. Parameters provided in datasheets and specifications may vary in different applications and performance may vary over time. All operating parameters, including typical parameters, must be validated for each customer application by the customer's technical experts. Product specifications do not expand or otherwise modify *DC COMPONENTS*'s terms and conditions of purchase, including but not limited to the warranty expressed therein.

Unless otherwise in writing, *DC COMPONENTS* products are intended for use as general electronic components in standard applications (eg: Consumer electronic, Computer equipment, Office equipment, etc.), and not recommended for use in a high specific application where a failure or malfunction of the device could result in human injury or death (eg: Aerospace equipment, Submarine cables, Combustion equipment, Safety devices, Life support systems, etc.)

Customers using or selling *DC COMPONENTS* products not expressly indicated for use in such applications do so at their own risk. If customer intended to use *DC COMPONENTS* standard quality grade devices for applications not envisioned by *DC COMPONENTS*, please contact our sales representatives in advance.



DC COMPONENTS CO., LTD.