

# End cap MICRO-NK-OTW

Ref. C24346C02TW, C24346C10TW, C24346C07TW, C24346L01TW

Ref. arch 24347, 24409, 24363, 24451



- Cable exit hole

## APPLICATION

- aesthetic finish and protection of the interior of the lighting fixture

## MOUNTING

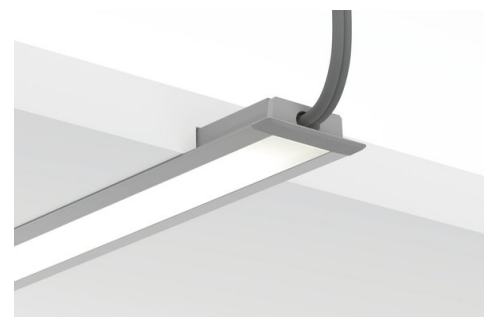
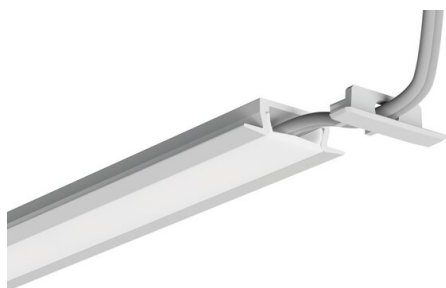
- to the profile, by pressing

## TECHNICAL SPECIFICATIONS

Material	ABS
Shape	rectangular
Height	6 mm
Width	22 mm
Corrosion resistance	yes
Corrosion resistance at high salinity	yes
Hole	yes

Color	Ref
■ gray	C24346C02TW 24347
□ white	C24346C10TW 24409
■ black	C24346C07TW 24363
■ metalized	C24346L01TW 24451

## SAMPLE PROJECTS



# End cap MICRO-NK-OTW

Ref. C24346C02TW, C24346C10TW, C24346C07TW, C24346L01TW

Ref. arch 24347, 24409, 24363, 24451

## RELATED PROFILES > UNIVERSAL



### **MICRO-NK**

A01587

Ref. arch C1587