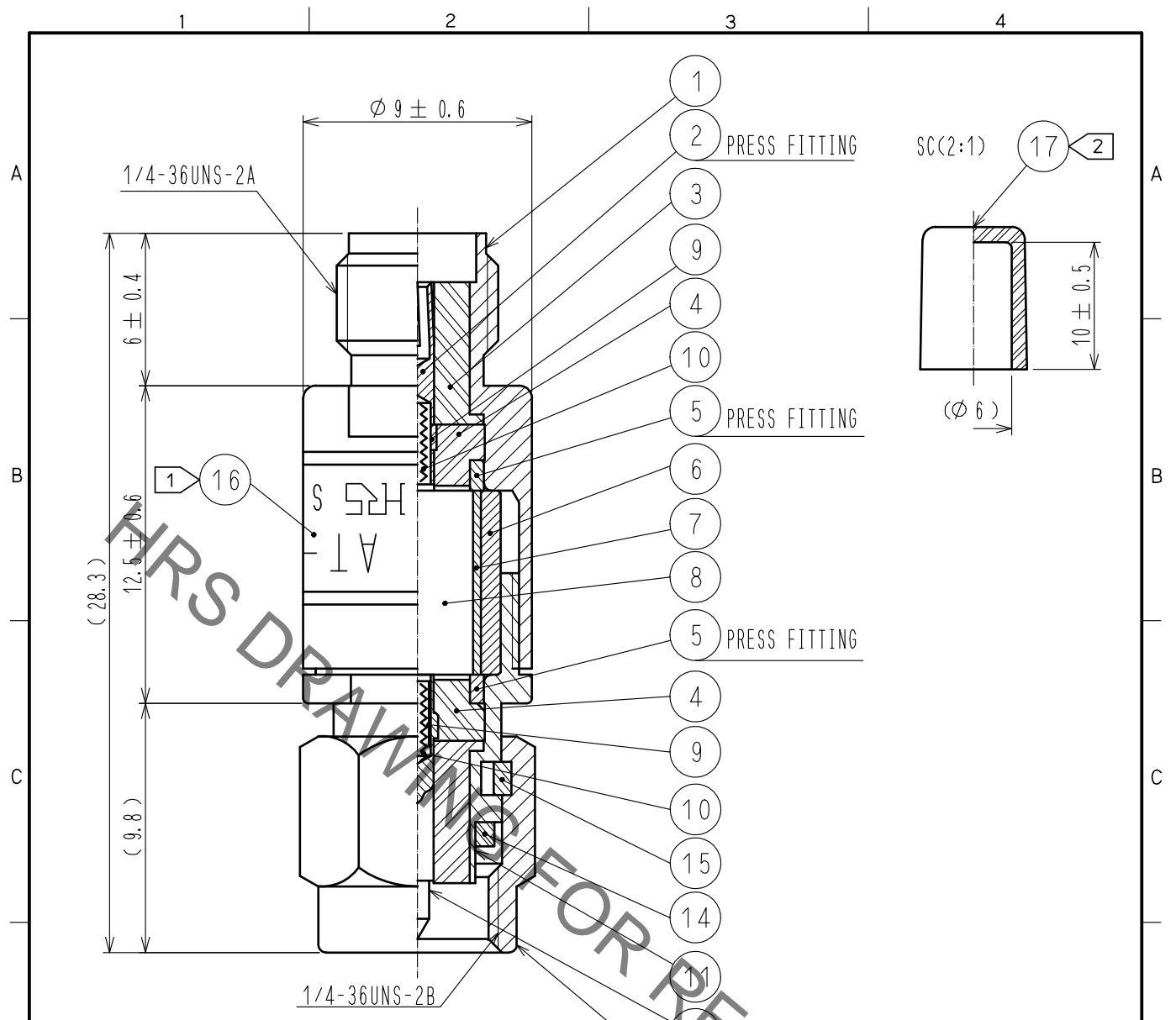


Jul.1.2020 Copyright 2020 HIROSE ELECTRIC CO., LTD. All Rights Reserved.  
 In case of consideration for using Automotive equipment / device which demand high reliability, kindly contact our sales window correspondents.



NOTE 1 INDICATION OF THE LABEL.  
 · AT-130V  
 · 30dB  
 · HRS  
 · S. NO.

2 Ref. no. 17 is delivered with being attached to ref. no. 1.

RoHS COMPLIANT

9	BERYLLIUM COPPER	GOLD PLATING					
8	ALUMINA		17	STYRENIC-BASED ELASTOMERS	NATURAL		
7	BERYLLIUM COPPER	GOLD PLATING	16		LABEL		
6	BRASS	NICKEL PLATING	15	BERYLLIUM COPPER	NICKEL PLATING		
5	BRASS	NICKEL PLATING	14	SILICON RUBBER			
4	PTFE		13	STAINLESS STEEL	PASSIVATED		
3	PTFE		12	BERYLLIUM COPPER	GOLD PLATING		
2	BERYLLIUM COPPER	GOLD PLATING	11	STAINLESS STEEL	PASSIVATED		
1	STAINLESS STEEL	PASSIVATED	10	PIANO WIRE			
NO.	MATERIAL	FINISH .	REMARKS	NO.	MATERIAL	FINISH .	REMARKS

UNITS mm		SCALE 4 : 1	COUNT 	DESCRIPTION OF REVISIONS	DESIGNED	CHECKED	DATE
<div style="display: flex; align-items: center;"> <div> <p>HIROSE ELECTRIC CO., LTD.</p> </div> </div>				APPROVED : KY. SHIMIZU	15.10.28	DRAWING NO. EDC4-181142-00 PART NO. AT-130V CODE NO. CL354-0279-6-00	
				CHECKED : TO. KATAYAMA	15.10.28		
				DESIGNED : YI. FUNADA	15.10.28		
				DRAWN : YI. FUNADA	15.10.28		
					<span style="border: 1px solid black; border-radius: 50%; padding: 2px;">1</span> / <span style="border: 1px solid black; border-radius: 50%; padding: 2px;">1</span>		