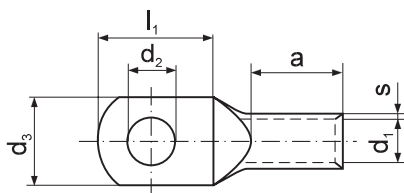
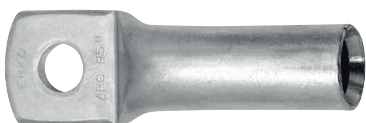


ARC Tubular terminal

for single- and multi-wire Al cables



Material: aluminum

Cross section mm ² /sm [mm ²]	For screw M	d ₂ [mm]	Symbol	s [mm]	d ₁ [mm]	d ₃ [mm]	l ₁ [mm]	a [mm]	Weight [g/pce]	Unit [pcs]	Dies discriminant	Crimping tools
16	6	6,4	ARC 16	2	5,2	16	18	23	5,27	20	9	R50, PR95A (Doesn't apply to 16 mm ²), + as below
25	8	8,4	ARC 25	2	6,4	20	23	26	7,60	20	10	
35	8	8,4	ARC 35	2,2	7,6	20	23	28	10,14	10	12	
50	10	10,5	ARC 50	2,4	9,2	24	27	34	15,40	10	14	
70	10	10,5	ARC 70	2,5	10,6	26	27	40	19,70	10	16	
95	10	10,5	ARC 95	2,6	12,8	26	25,5	43	26,60	10	18	
120	12	13	ARC 120	2,7	14,3	28	30	52	35,40	10	20	EPZC300, EPZ300, GZ300, HRZ300, PRZ240, GO300, GU300, HR300, PR240
150	16	17	ARC 150	2,9	16,2	34	33	55	45,28	10	22	EPZC300, EPZ300, GZ300, HRZ300, GO300, GU300, HR300
185	16	17	ARC 185	3,1	17,8	38	37	60	59,10	10	23	
240	16	17	ARC 240	4	20,2	40	40	64	95,00	10	28	

Production on request. Terminals of dimensions other than in chart.