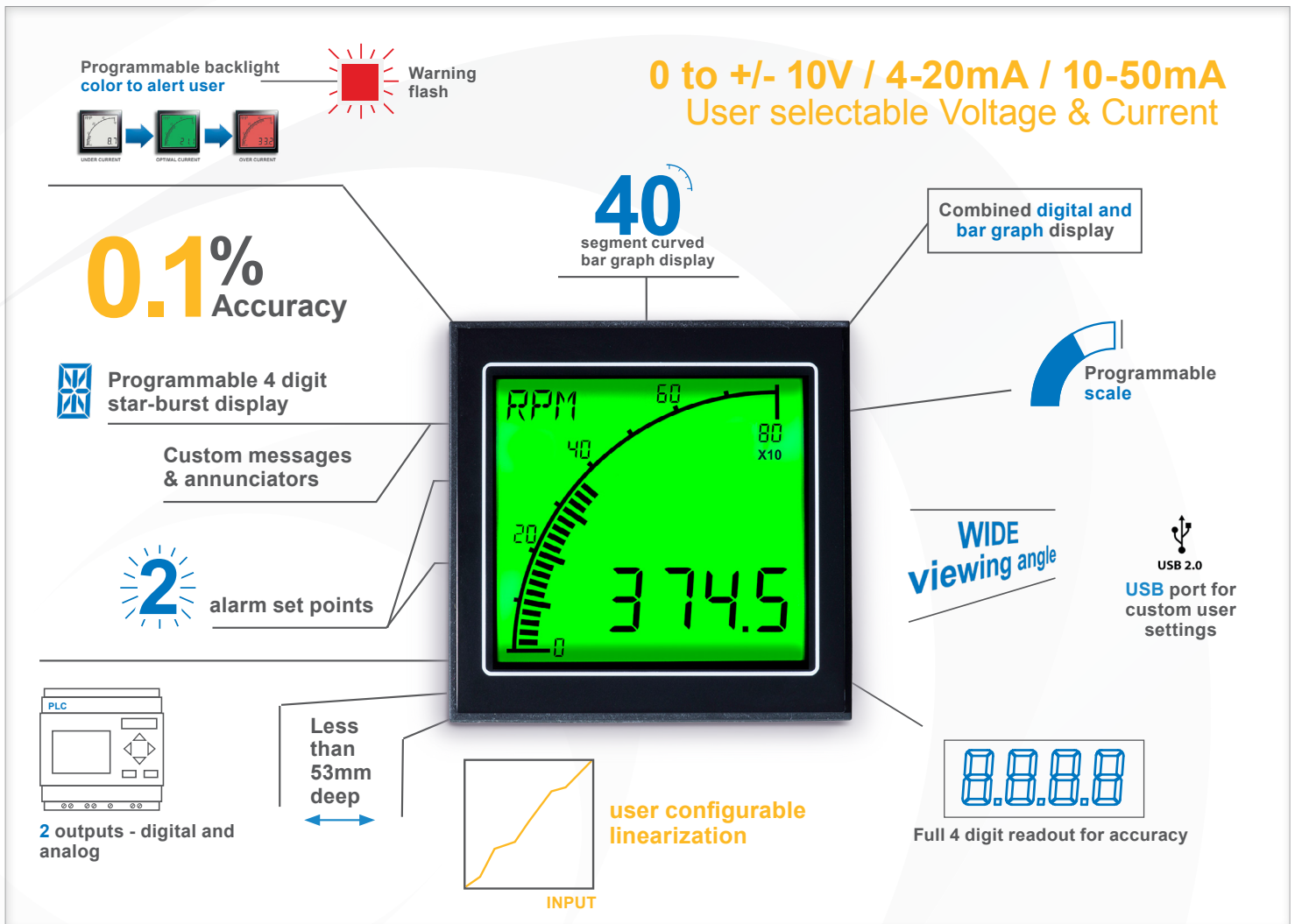




# Process Meter

For a range of industrial applications

Easy to Use. Easy to Read.



Featuring an acclaimed easy-to-read display and a versatile set of inputs, the Process Meter takes the APM into a wide range of new industrial applications.

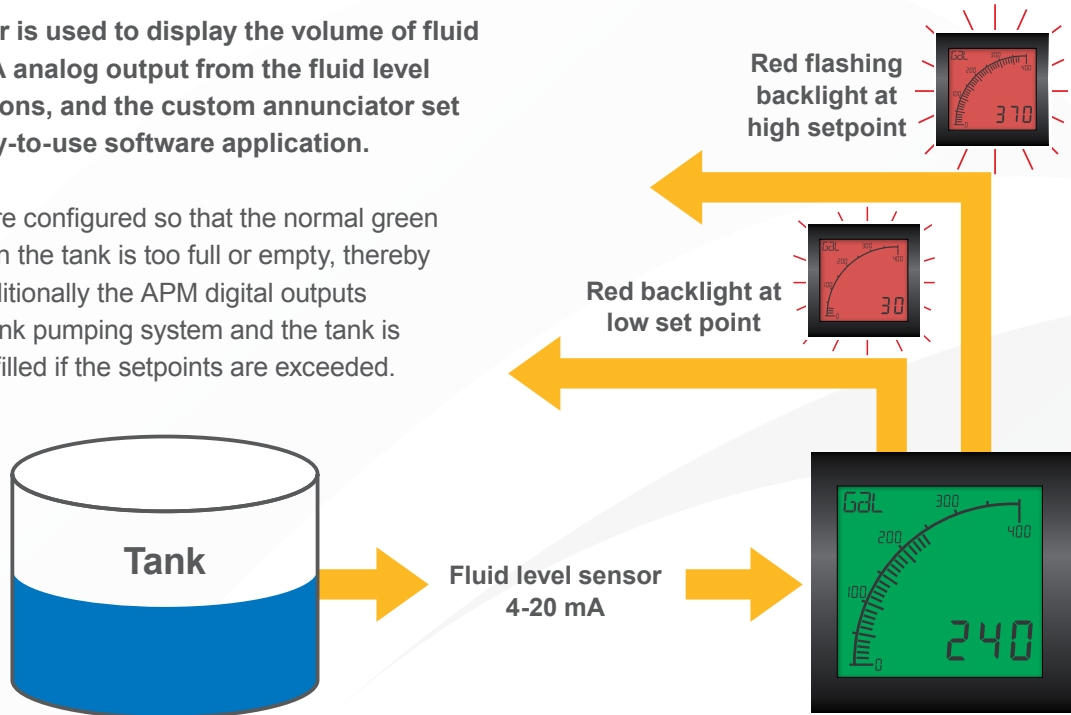
The programmable scale and custom annunciators mean users can tailor the meter to display their critical parameters exactly how they want, while the dynamic backlighting, in conjunction with setpoints, means operators are visually alerted when a parameter is out of range. The two outputs can be used to control other systems in the process, meaning the APM Process Meter is much more than just a display.

Trumeter's innovative technology brings a greater level of accuracy to the APM range through input signal optimization. By using this technology, accuracy of 0.1% or better is now achieved, allowing for more precise measurement, display and control. Non-linear sensors, such as thermocouples and pressure transducers, can also be used thanks to the new APM Configurator application that allows the user to configure upto 20 points in a non-linear conversion table.

## Fluid Level Application

The APM Process Meter is used to display the volume of fluid in the tank. The 4-20mA analog output from the fluid level sensor is scaled to gallons, and the custom annunciator set to “Gal”, all via the easy-to-use software application.

High and low setpoints are configured so that the normal green display will flash red when the tank is too full or empty, thereby alerting the operator. Additionally the APM digital outputs are integrated in to the tank pumping system and the tank is automatically drained or filled if the setpoints are exceeded.

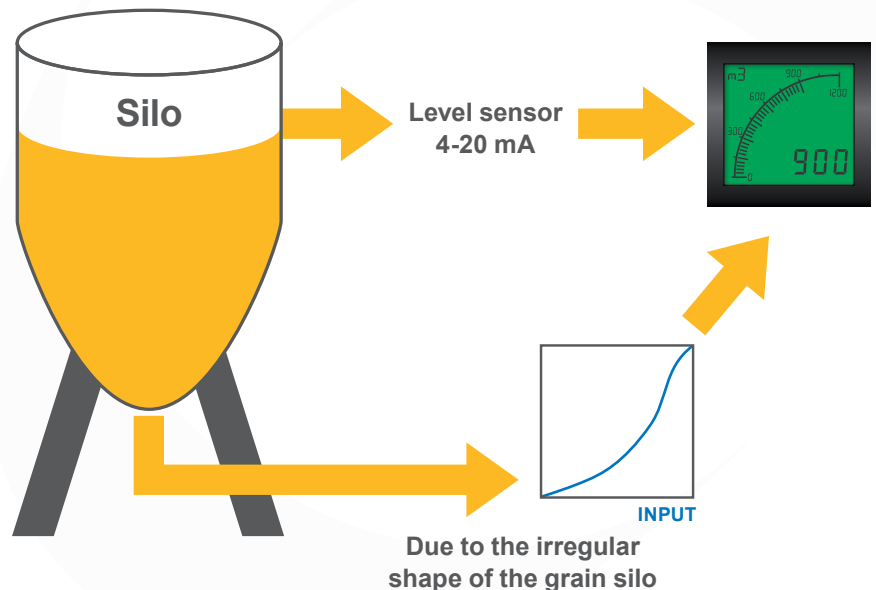


## Silo Volume Application

The APM Process Meter is used to display the volume of material in the silo, using the analog output from a level sensor.

The signal from the sensor is scaled to measure cubic meters, and the annunciator customised to  $m^3$ , all via the easy-to-use software. Due to the irregular shape of the silo, the 20-point linearization table is used to correct the non-linear signal from the sensor.

The displayed value accurately shows the volume in the silo. High or low setpoints can be set, and the APM can be integrated into other systems for process control.



## Key Features

### Large multi-format display that incorporates:

- 40 segment bar graph display
- Large 4-digit display
- Separate Starburst display area for annunciators, custom messages and alarm information
- Dynamic backlight color

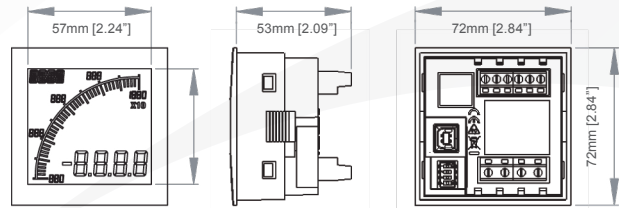
### Programmable:

- Display Range (Both Min & Max Values)
- Custom annunciators
- User-selectable backlight color and intensity
- Two independent alarm set-points
- Two independent outputs
- 4-20mA analog retransmission output

### Visibility:

- User-adjustable backlight brightness and color
- Large display
- Wide viewing angle (horizontal and vertical)
- Custom annunciators

### Dimensions:



Panel cutout: 68mm x 68mm [2.68" x 2.68"] as per DIN43700/IEC61554

| INPUT      | VOLTAGE                                   | CURRENT                                    |
|------------|---|--|
| Range (DC) | 0 to +/-10VDC                             | 0 - 50mA                                   |
| Impedance  | 100KΩ                                     | 15Ω  |
| Accuracy   | 0.1% of input or 5mV whichever is greater | 0.01% of input or 5uA whichever is greater |

### ENVIRONMENTAL

|                            |              |
|----------------------------|--------------|
| Temperature - operating    | -10 to +60°C |
| Temperature - storage      | -40 to +70°C |
| IP rating (from the front) | IP65         |

### POWER SUPPLY

|                          |               |
|--------------------------|---------------|
| Nominal Input (AC or DC) | 12-24 VAC/VDC |
| Max Power                | 1.6W          |

### DISPLAY

|                              |                      |
|------------------------------|----------------------|
| Number of digits             | 4                    |
| Digit height                 | 12mm [0.47"]         |
| Number of message characters | 4                    |
| Message character height     | 6mm [0.236"]         |
| Backlight colors             | Red, Green, White    |
| LCD display                  | Positive or Negative |

### OUTPUTS

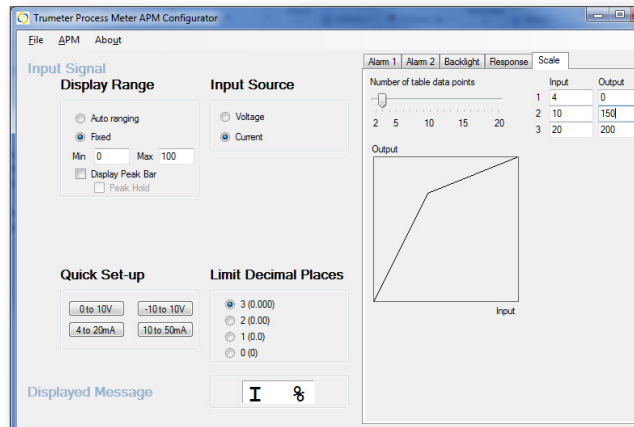
|               |        |
|---------------|--------|
| Max voltage   | 34V    |
| Max current   | 500mA  |
| Analog output | 4-20mA |

### CERTIFICATION

UL and cUL, CE

## Easy To Use Software

Just plug into any USB port on your PC, run the freely available APM Configurator application and you're off. No drivers required.



### Part Numbers:

| Part         | Description                                  |
|--------------|--|
| APM-PROC-APO | APM PROCESS METER, POSITIVE LCD WITH OUTPUTS |
| APM-PROC-ANO | APM PROCESS METER, NEGATIVE LCD WITH OUTPUTS |
| 022128-01    | USB Cable                                    |

### By Request: Modbus connectivity

|              |  |
|--------------|--|
| APM-PROC-APS | APM RATE METER, POSITIVE LCD WITH MODBUS |
| APM-PROC-ANS | APM RATE METER, NEGATIVE LCD WITH MODBUS |



**Trumeter (The Americas)**  
 6601 Lyons Rd, Suite H-7  
 Coconut Creek, Florida  
 FL 33073,  
 USA  
 Tel: +1 954 725 6699  
 Email: sales.usa@trumeter.com

**Trumeter (Europe)**  
 Pilot Mill  
 Alfred Street  
 Bury,  
 BL9 9EF  
 Tel: +44 161 674 0960  
 Email: sales.uk@trumeter.com

**Asia Pacific Distributor**  
 Innovative Design Technologies Sdn. Bhd  
 Lot 5881, Lorong Iks Bukit Minyak 1  
 Taman Perindustrian Iks, 14000 Bukit Tengah  
 Penang, Malaysia  
 Web: www.idtworld.com  
 Tel: + 604 5015700  
 Email: info@idtworld.com