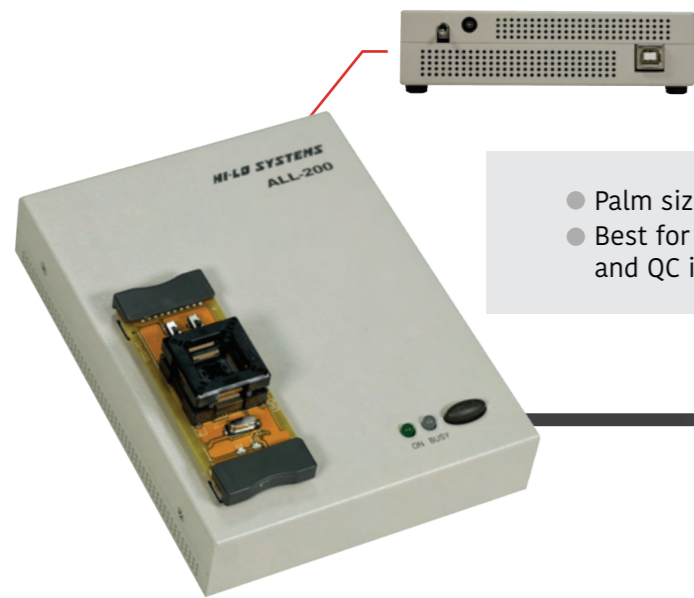


# 200 Series Universal IC Programmer

## 200 Series Universal IC Programmer

- Supported over 100,000 ICs
- Excellent programming performance on potential device MCU, NOR Flash



- Palm size and space saving
- Best for engineering development and QC inspection

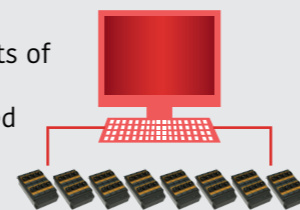
## ALL-200 Engineering Universal Programmer



- Support up to 8 sockets
- Best for small to medium volume production

### Expansion flexibility for production

- One computer can connect to 8 units of ALL-200G at the same time
- Up to 64 devices can be programmed simultaneously



## ALL-200G Universal Gang Programmer

## Feature

### Excellent programming performance

- Self-developed hardware and software, provide high speed and high quality programming
- Full IC pin contact check prevents bad contact in socket or IC damage from reversed placement

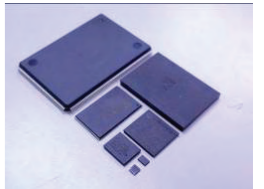
### Support various IC types

- Support MCU/MPU, NOR/NAND Flash, EEPROM, SPI memory, FPGA, CPLD, etc.



### Support various IC packages

- Support DIP, SDIP, SOP, SSOP, TSOP, PLCC, QFP, QFN, SON, BGA, WLCSP, etc.

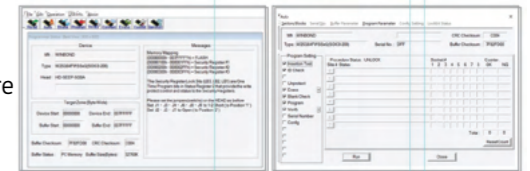


### High quality adapters

- High quality manufactured socket boards ensure programming quality as well as the lifetime of usage
- Easy to expand programming types for various ICs by simply replacing appropriate adapters

### User-friendly software interface

- Clear display of each function in the entire programming procedure
- Display details and status of each device during programming



### Timely software support

- Fast software support by customer's request
- The supporting software is updated weekly on HI-LO website for checking or retrieving
- All programming problems will be followed and handled immediately

## Specification

	ALL-200	ALL-200G
Device supported	MCU/MPU, NOR/NAND Flash, EEPROM, SPI memory, FPGA, CPLD, etc.	
Package supported	DIP, SDIP, SOP, SSOP, TSOP, PLCC, QFP, QFN, SON, BGA, WLCSP, etc.	
Support IC pin count	8 pins ~ 300 pins	
Socket number	1 socket	Support up to 8 sockets
Key functions	Load File, Read Master, Program, Verify, Auto, ID Check, Checksum, Blank Check, Erase, Secure, Protect / Unprotect, Edit, Function Configuration, Self Test, etc.	
Data transfer interface	USB2.0	
Compatible OS	Windows 7, 10	
Power	AC 100 - 240V / 50 - 60Hz	
Power consumption	50 W	
Operation temperature	0 ~ 40°C (32 ~ 105°F)	
Dimension	W130 x D170 x H40 (mm)	W162 x D257 x H100 (mm)
Weight	0.82 kg	2.24 kg
Certification	CE certified	