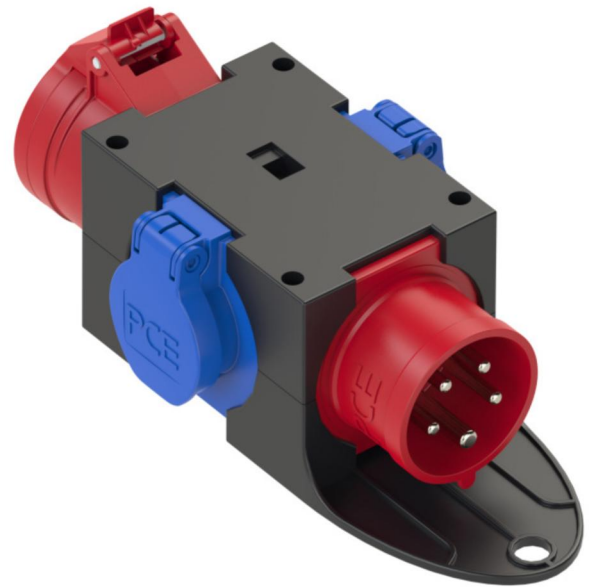


PCE data sheet

article#	9430452
article description	Mobilverteiler Kunststoff Baureihe ST.ANTON 16/5 2xSSD PW16/5 m.B. IP44
description long	thermoplastic mobile distribution box tpye ST.ANTON new IP44 with handle 1xCEE-plug 16A 5p 400V phase inverter 1xCEE-socket 16A 5p 400V protected with pre-fuse of supply line 2xSK-sockets 16A 250V IP54 protected with pre-fuse of supply line distribution box is ready wired for using
GTIN (EAN)	9003399304521
country of origin	AT
customs number	85366990
net weight	0.550 kg
packaging quantity	2

ETIM 7.0	EC000379
CEE socket outlet 16 A	1x16A5p400V
Number of socket outlets with protective contact	2
Protection	None
Earth leakage switch	None
Material housing	Plastic
Contact material	CuZn
Power supply/connection possibility	Built-up plug
Type of mains connection	CEE 16 A
Handling	Portable
Degree of protection (IP)	IP44
Colour	Black
Height	80 mm
Width	115 mm
Depth	78 mm



www.manufacturer-safety.info