

2J0102-C115N

2.4/5.0 GHz ISM Connector Mount

Key Features

2.4/5.0 GHz ISM

- 2410-2490 MHz
- 4920-5925 MHz

Connector Mount

Ground Plane Dependent

High Gain

Dimensions 56 x 9.5 mm



1. Antenna and electrical specifications

| Parameters | 2.4/5.0 GHz ISM Antenna | |
|-----------------------------|---|-----------|
| Standards | WiFi, BT, ZigBee, ISM | |
| Band (MHz) | 2.4 Ghz | 5.0 Ghz |
| Frequency (MHz) | 2410-2490 | 4920-5925 |
| Return Loss (dB) | ~-14.7 | ~-12.8 |
| VSWR | ~1.4:1 | ~1.7:1 |
| Efficiency (%) | ~60 | ~83 |
| Peak Gain (dBi) | ~4.0 | ~5.2 |
| Average Gain (dB) | ~-2.2 | ~-0.9 |
| Impedance (Ohm) | 50 | |
| Polarisation | Linear | |
| Radiation Pattern | Omni-Directional | |
| Max. Input Power (W) | 25 | |
| Connector Type | Most RF Connectors (RP-SMA-Male Standard) | |

Antenna Measurement Conditions:

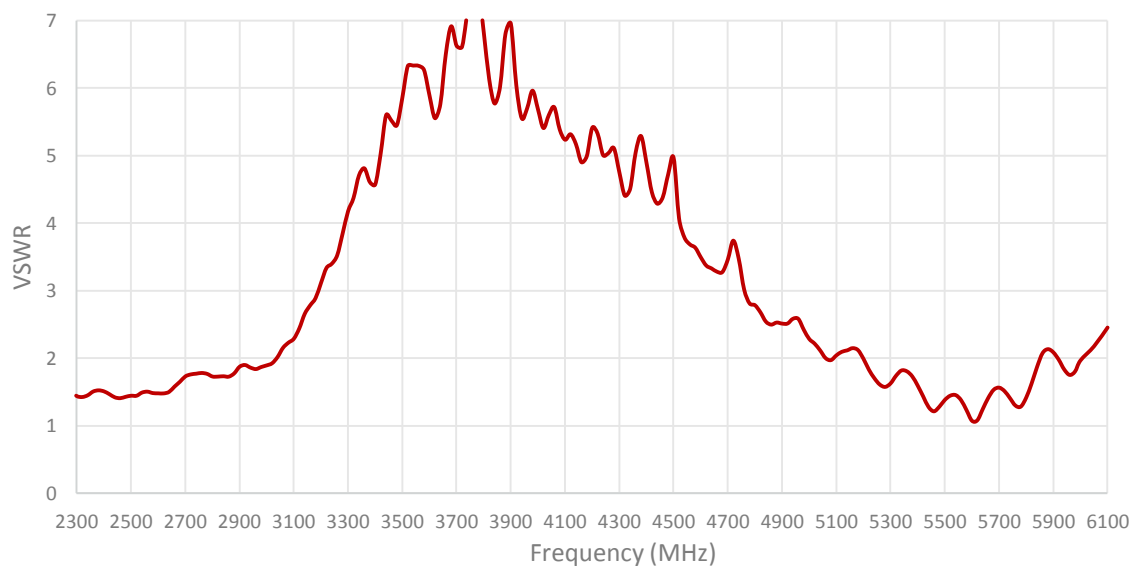
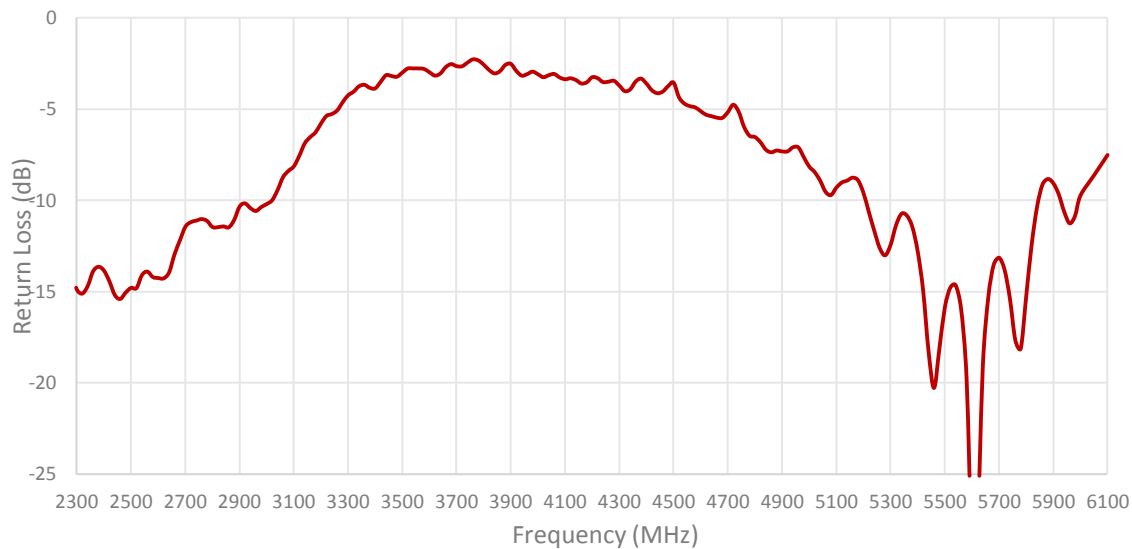
Mounted on Ground Plane of 70x35 mm

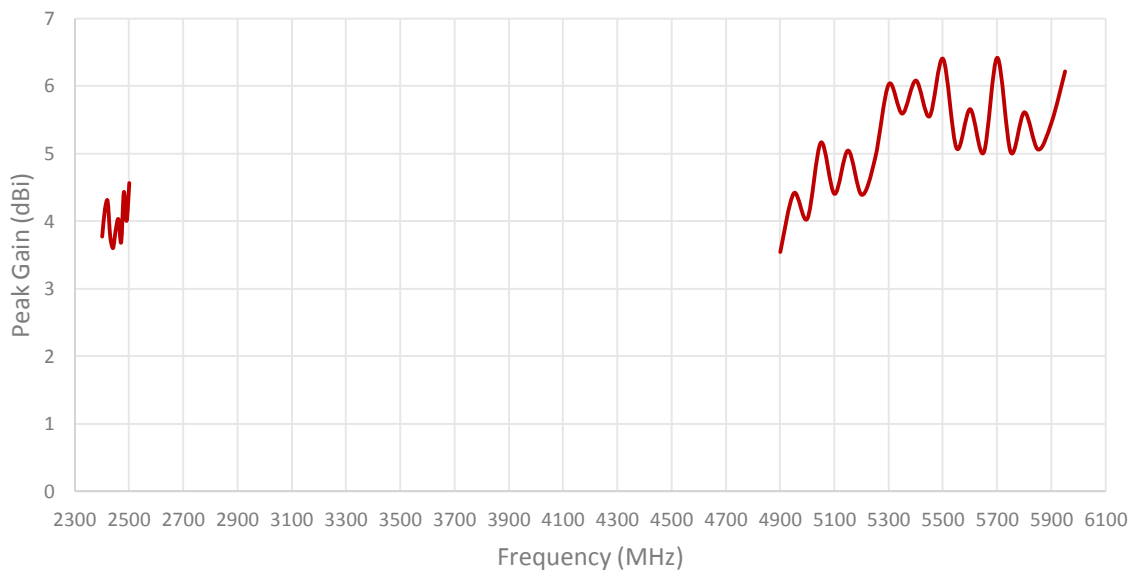
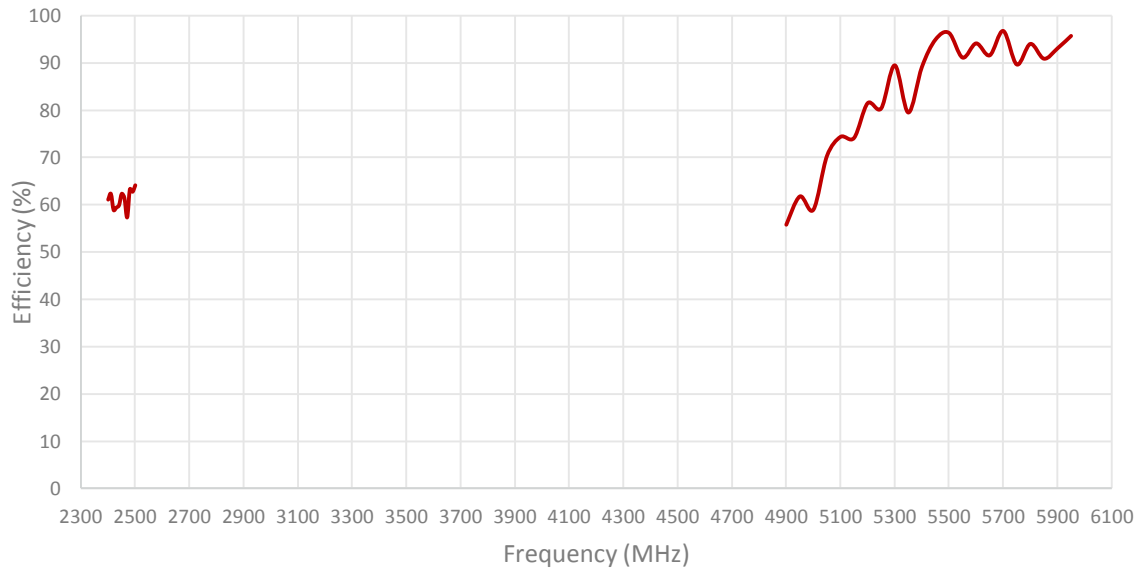
Measured in Certified CTIA 3D Anechoic Chamber

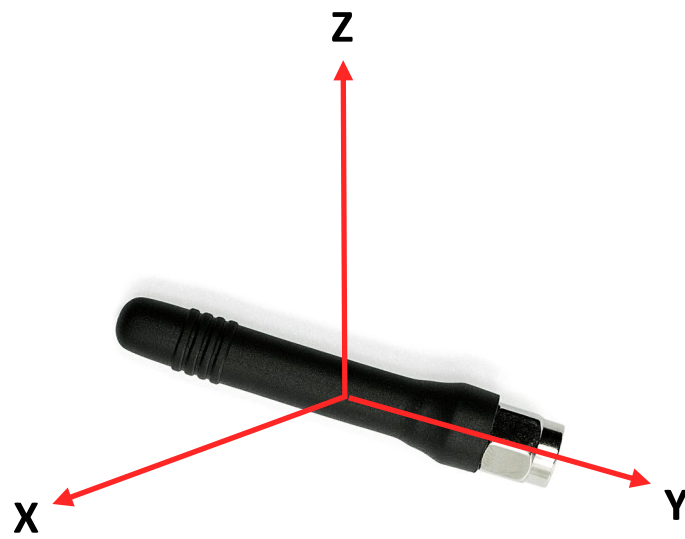
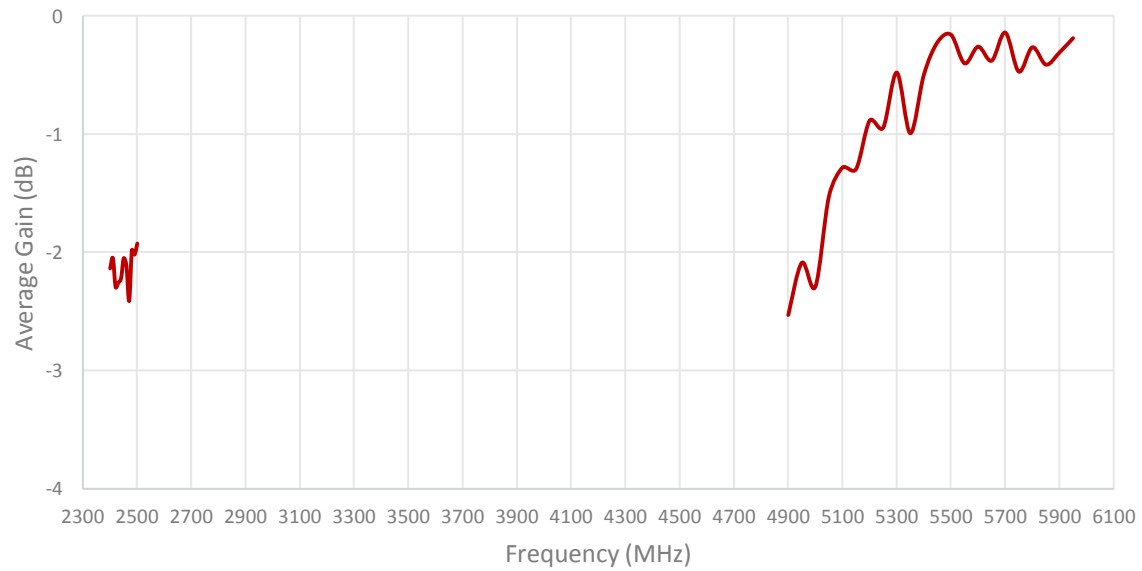
2. Mechanical and environmental specifications

| Specifications | 2J0102-C115N |
|----------------------------------|-----------------|
| Mounting Type | Connector Mount |
| Dimensions (mm) | 56 x 9.5 |
| Radome | ABS UV Stable |
| Radome color | Black |
| Operating Temperature (C) | -40 to +85 |
| Storage Temperature (C) | -40 to +85 |
| Substance Compliance | RoHS |

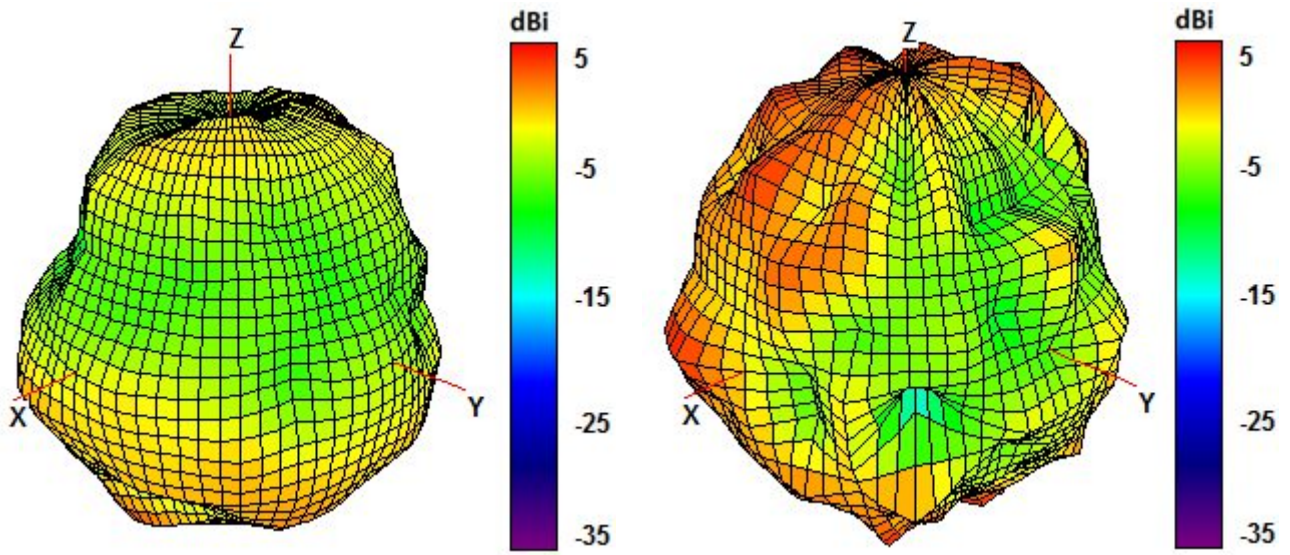
3. Antenna parameters





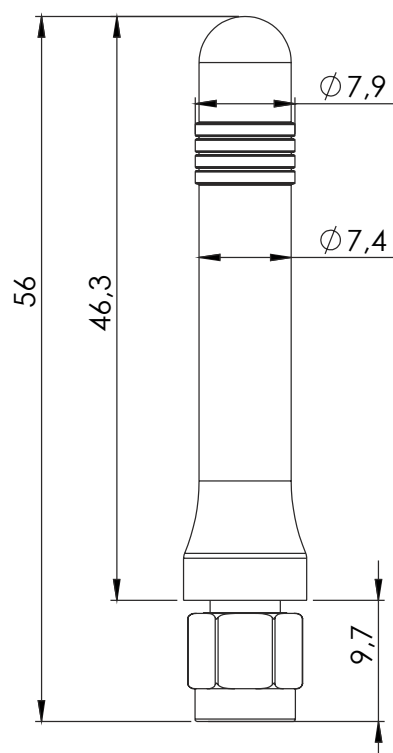
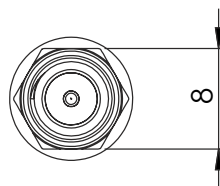


Radiation pattern reference



2450 and 5500 MHz Radiation pattern

4. Antenna drawings



5. Antenna Images

