

03 038799

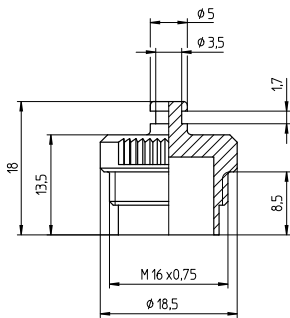
Circular connectors with threaded joint M16 acc. to IEC 61076-2-106, IP40/IP68



Protecting cap, IP68, for sockets, without chain

03

038799



#### Environmental conditions

Temperature range -40 °C/+85 °C

#### Materials

Cap PC

#### Mechanical data

Tightening torque connector 1-3 Nm

Tightening torque nut 1-3 Nm

Protection class IP68<sup>1</sup>

<sup>1</sup> according to IEC DIN EN 60529, only in locked condition with an appropriate counterpart; IPX8 requirements under agreement between manufacturer and user

#### Associated products

##### Accessories

<a href="#">☞ 030398</a>	<a href="#">☞ 0304</a>	<a href="#">☞ 0304-1</a>
<a href="#">☞ 0304-2</a>	<a href="#">☞ 0305</a>	<a href="#">☞ 0305-1</a>
<a href="#">☞ 0305-1 U</a>	<a href="#">☞ 0305-2</a>	<a href="#">☞ 0306</a>
<a href="#">☞ 0306-1</a>	<a href="#">☞ 0306-2</a>	<a href="#">☞ 0307</a>
<a href="#">☞ 0307-1</a>	<a href="#">☞ 0307-2</a>	<a href="#">☞ 030798-1</a>
<a href="#">☞ 030798-2</a>	<a href="#">☞ 030799-2</a>	<a href="#">☞ 0308</a>
<a href="#">☞ 0308-1</a>	<a href="#">☞ 0308-2</a>	<a href="#">☞ 0321</a>
<a href="#">☞ 0322</a>	<a href="#">☞ 0322-1</a>	<a href="#">☞ 032200</a>
<a href="#">☞ 0360</a>	<a href="#">☞ 036000</a>	<a href="#">☞ 0362</a>
<a href="#">☞ 036297</a>	<a href="#">☞ 0363</a>	<a href="#">☞ KFR</a>
<a href="#">☞ KfV</a>	<a href="#">☞ KGR</a>	<a href="#">☞ KGV</a>
<a href="#">☞ KV</a>	<a href="#">☞ KV ... C</a>	<a href="#">☞ KV ...-8</a>
<a href="#">☞ WKV</a>	<a href="#">☞ WKV ... C</a>	<a href="#">☞ Weitere Produkte auf Anfrage</a>

[☞ Weitere Produkte auf Anfrage](#)

03

038799

Designation	Pole Number	PU (Pieces)	MDQ (Pieces)
038799	-	50	500

**Packaging:**

in a cardboard box