

Xiao e WiFi Module

(WT8266-S1)

Extreme / Open / Small / Easy

User Manual

Version 2.0

2015 / 9 / 20

Disclaimer and Copyright Notice

Information in this document, including URL address for reference, may change without notice.

Document "AS IT IS", WITHOUT ANY WARRANTY, including warranties of merchant ability, for any particular purpose or non-infringement guarantee, and any proposal, any guarantee of specification or sample mentioned in other place. This document assumes no liability, including liability for infringement of any patent behavior of the use of this information in the document produced. This document is not to prohibit reverse speech or other ways to authorize any intellectual property permission, whether express or implication.

Wi-Fi Alliance logos are owned by all the Wi-Fi Alliance.



All trade names mentioned in the text, trademarks and registered trademarks are the property of their respective owners, and are hereby acknowledged.

Note

As the product upgrade or other reasons, this manual is may change. Shenzhen Wireless-Tag Technology Co., Ltd has right to modify the contents of this manual without any notice or warning. This manual is only as a guide,Wireless-Tag Technology Co., Ltd blind every effort to provide accurate information in this manual, but the Wireless-Tag blind manual does not ensure that there is no error, all statements in this manual, information and suggestions do not constitute any guarantee of express or implication.

Symbol Conventions

The following symbols may appear in this article, they are defined as follows.

Symbol	Description
 Warning	Text with this symbol indicates a potentially hazardous situation, which if ignored, could result in equipment damage, data loss, performance degradation or unexpected results.
 Description	Text with this mark is the additional information of main body which is to emphasize and supplement

Contents

1. TERM DESCRIPTION.....	4
2. TEST BOARD INTRODUCTION.....	5
2.1 PHYSICAL MAP.....	5
2.2 SCHEMATICS.....	7
3. PROGRAM GUIDELINES.....	7
3.1 AUXILIARY TOOL AND CONDITIONS.....	7
3.2 TEST STEPS.....	7
4. SOFTWARE TESTING OF AT VERSION.....	12
4.1 AUXILIARY TOOL.....	12
4.2 TEST ENVIRONMENT.....	12
4.2.1 <i>SoftAP Mode</i>	12
4.2.2 <i>Station Mode</i>	12
4.3 TEST STEPS.....	13
4.3.1 <i>SoftAP Mode</i>	13
4.3.2 <i>Station Mode</i>	21
5. PRODUCT TRIAL.....	29

Amendment record

Version	Changed by	Time	Reason	Details
V1.0	Lemme	2015.08.24	Original	
V2.0	Lemme	2015.09.20	Update	Change Test Board picture; Change Figure 2-6 Schematics of Test Baseboard; Change 4.2.1 and 4.2.2 description;

1. Term Description

- SoftAP: That is a wireless access point just like a central node of the wireless network. Wireless router is a typical wireless access point.
- Station: That is wireless terminal, the terminal is a wireless network.

2. Test Board Introduction

WT8266-S1 provides specialized UART_WiFi functional test board to facilitate the customers to test the Wi-Fi module . Via the test board, it can simulate serial devices to access WiFi network and realize data transmission, but also can simulate WT8266-S1 works as the main control chip to access data of other devices and control.

2.1 Physical Map

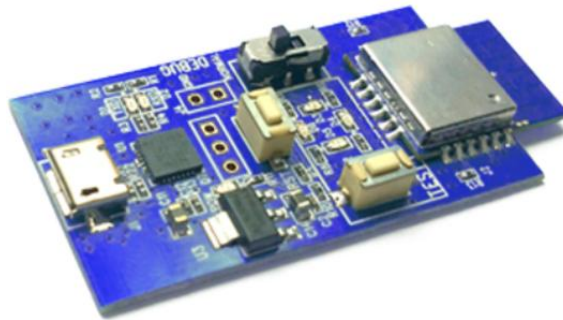


Figure 2-1 Perspective View of Test Board

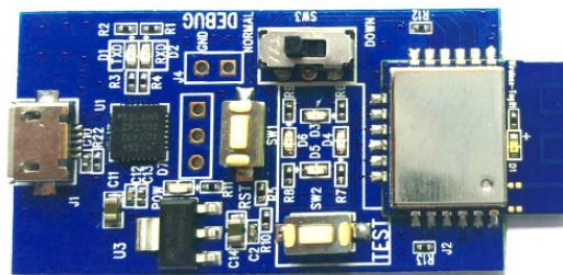


Figure 2-2 Front View of Test Board

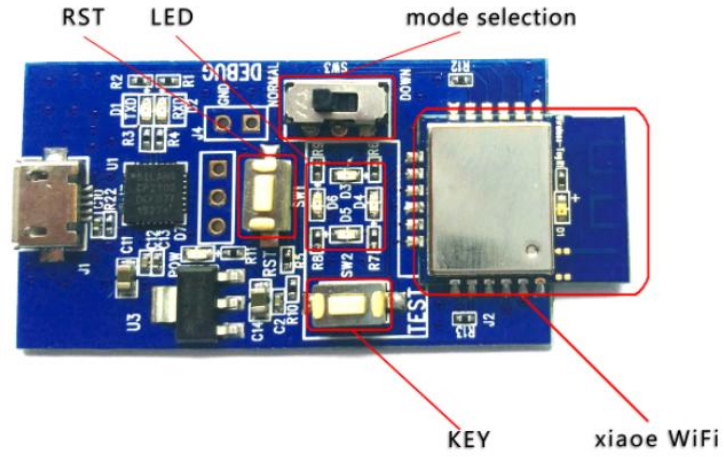


Figure 2-3 Explanatory Diagram of Test Board

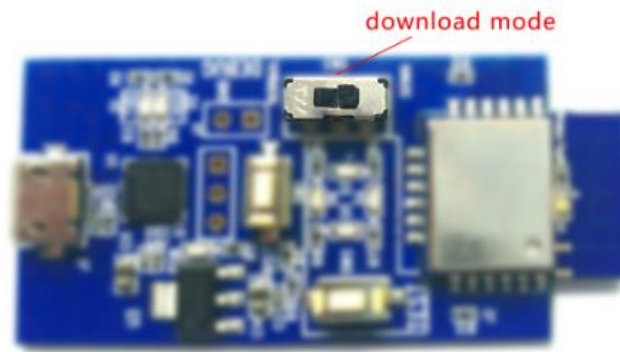


Figure 2-4 download mode of Test Board

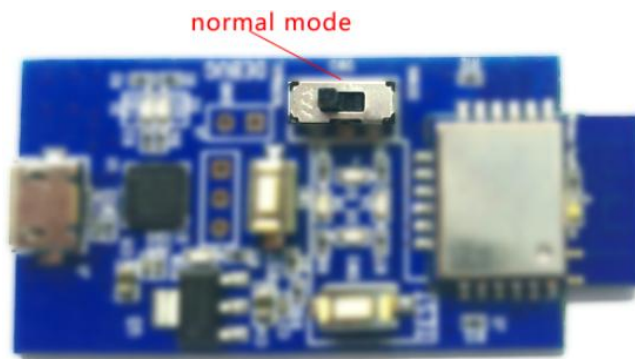


Figure 2-5 normal mode of Test Board

2.2 Schematics

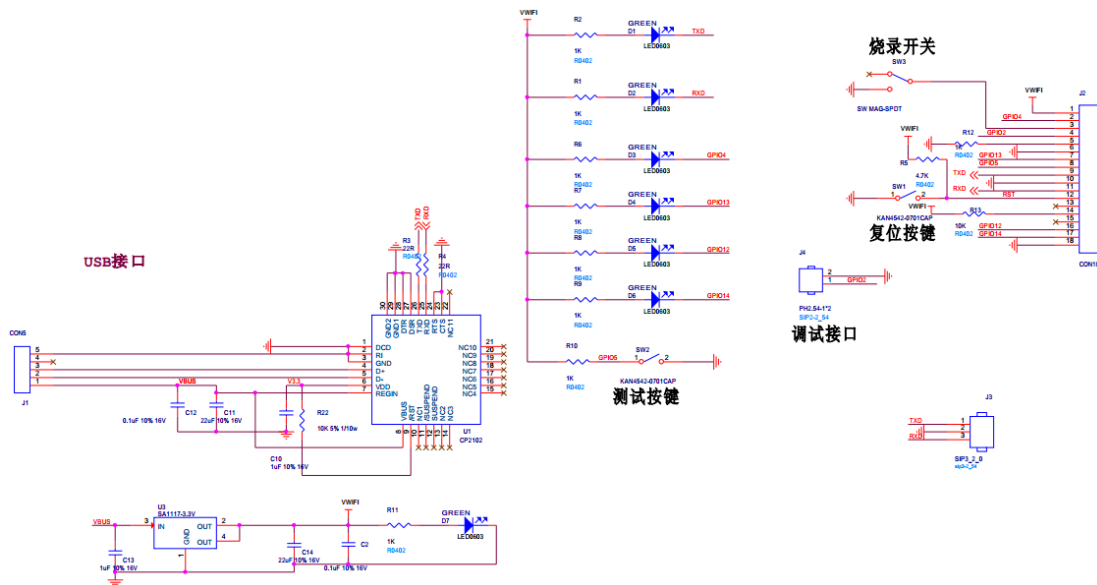


Figure 2-6 Schematics of Test Baseboard

3. Program Guidelines

3.1 Auxiliary tool and Conditions

- Xiao e WiFi module (WT8266-S1)
- WiFi Test Board
- Xiao e WiFi Burn ToolsV1.2
- Program Copy

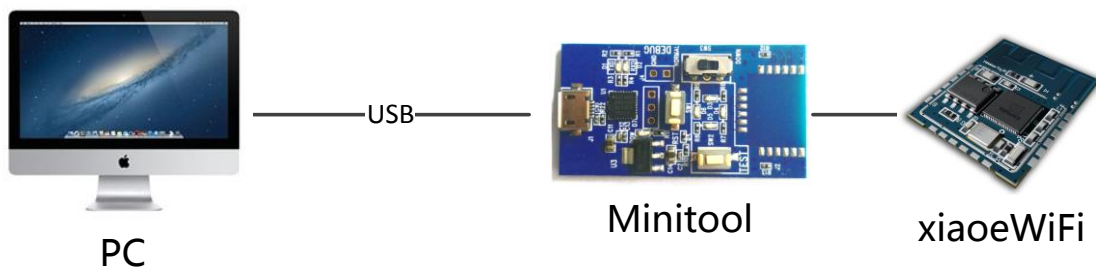


Figure 3.1 Test Logic Diagram

3.2 Test Steps

- 1、 To build test environment according to figure 3-1, figure 3-2

2、 Use jumped test board J1, and press the reset button, please refer to figure 3-2:

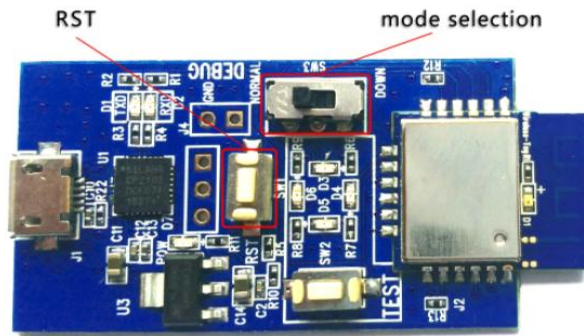


Figure 3.2 Physical Map of Test Board

3、 Check the serial port on PC side, open the "Xiao e WiFi burn tool V1.2" software and set up the serial port, please refer to figure 3-3 and figure 3-4:

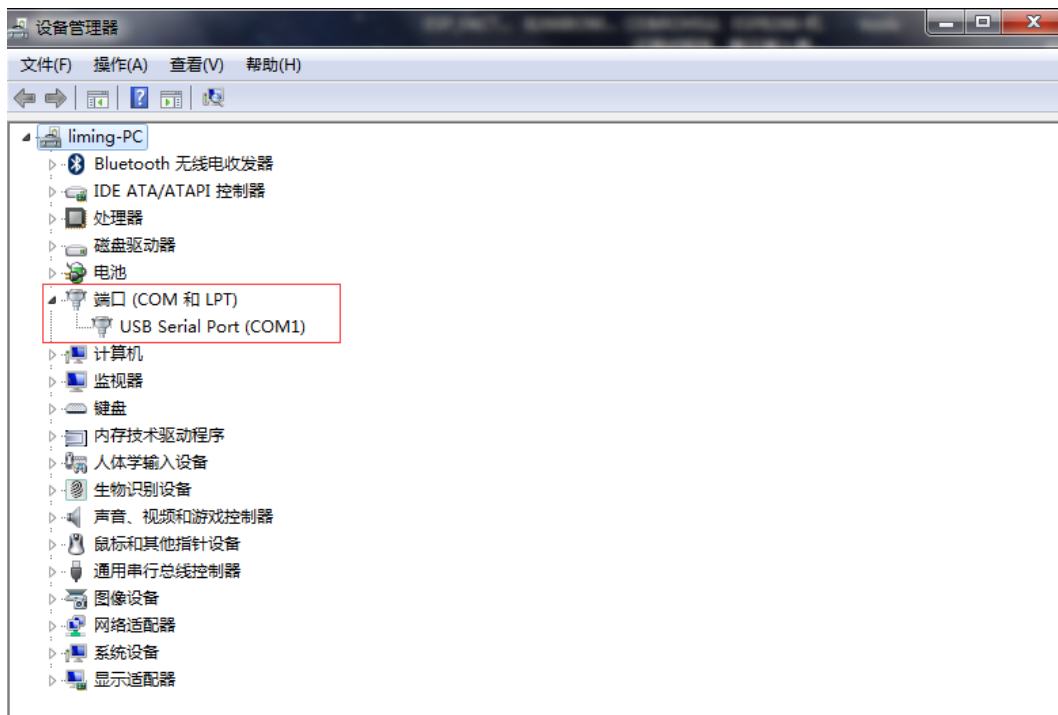


Figure 3-3 Device Management - Serial Port

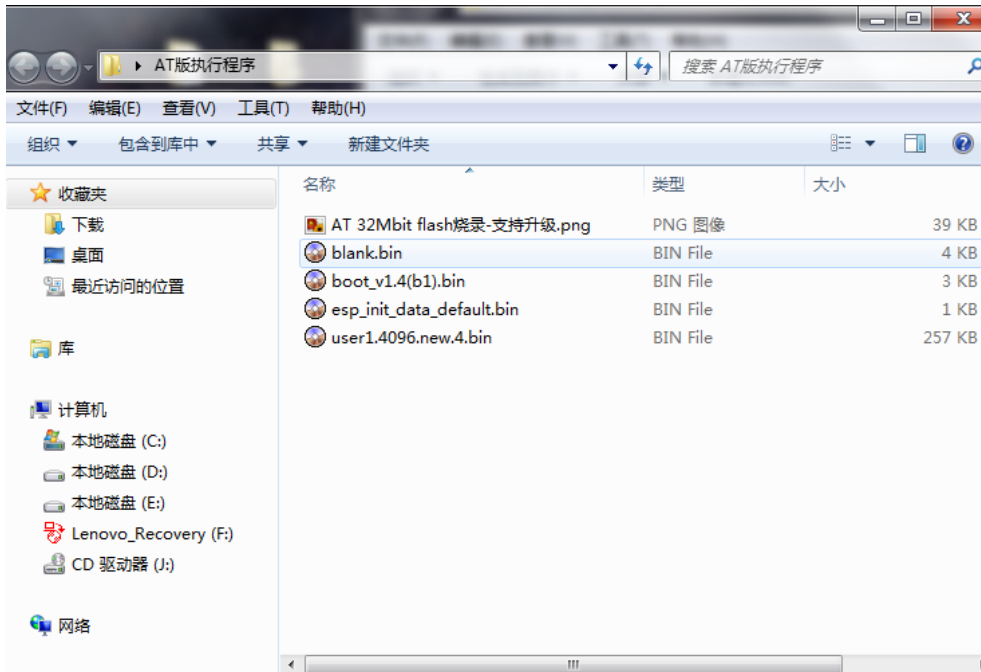


Figure 3-4 Executable File of Xiao e WiFi

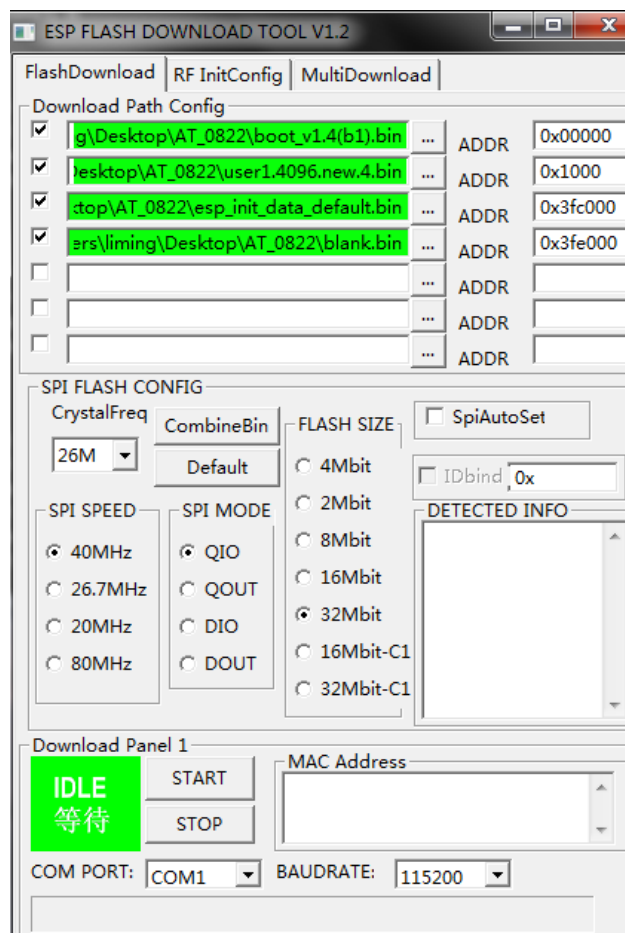


Figure 3-5 Program Tool V1.2 of Xiao e WiFi



Description: Program Place of File

boot_v1.4(b1).bin	0x00000
user1.4096.new.4.bin	0x1000
esp_init_data_default.bin	0x3fc000
blank.bin	0x3fe000

4、Import the files need to be programmed in program software "Download Path Config" and set SPI SPEED, SPI MODE, FLASH SIZE and BAUDRATE parameters, click "START" button, splats change from "Waiting" to "downloading", which means program download started, please refer to figure 3-6:

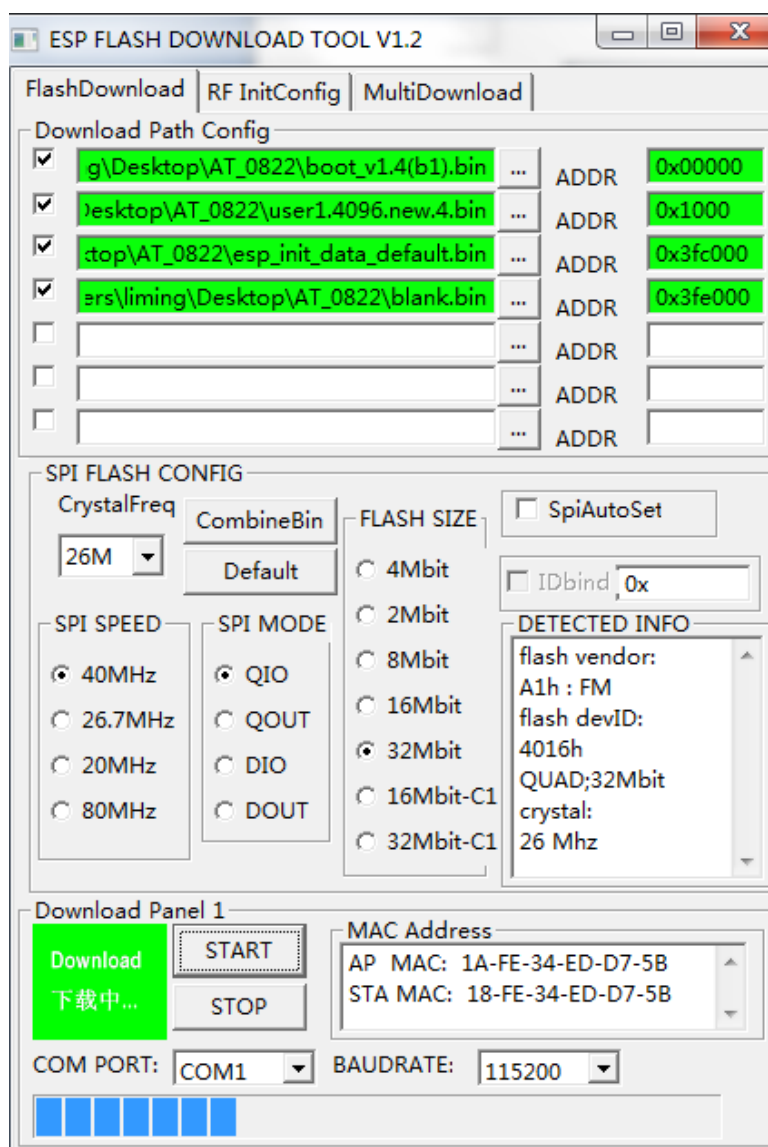


Figure 3-6 Program Downloading



Description:

- Xiao eWiFi module use a 32 Mbit external FLASH, please pay attention when program
- Design of the baud rate is recommended to use 115200 bps;

4、In program software, splats change from "downloading" to "complete" means the program download is complete, please refer to figure 3-7:

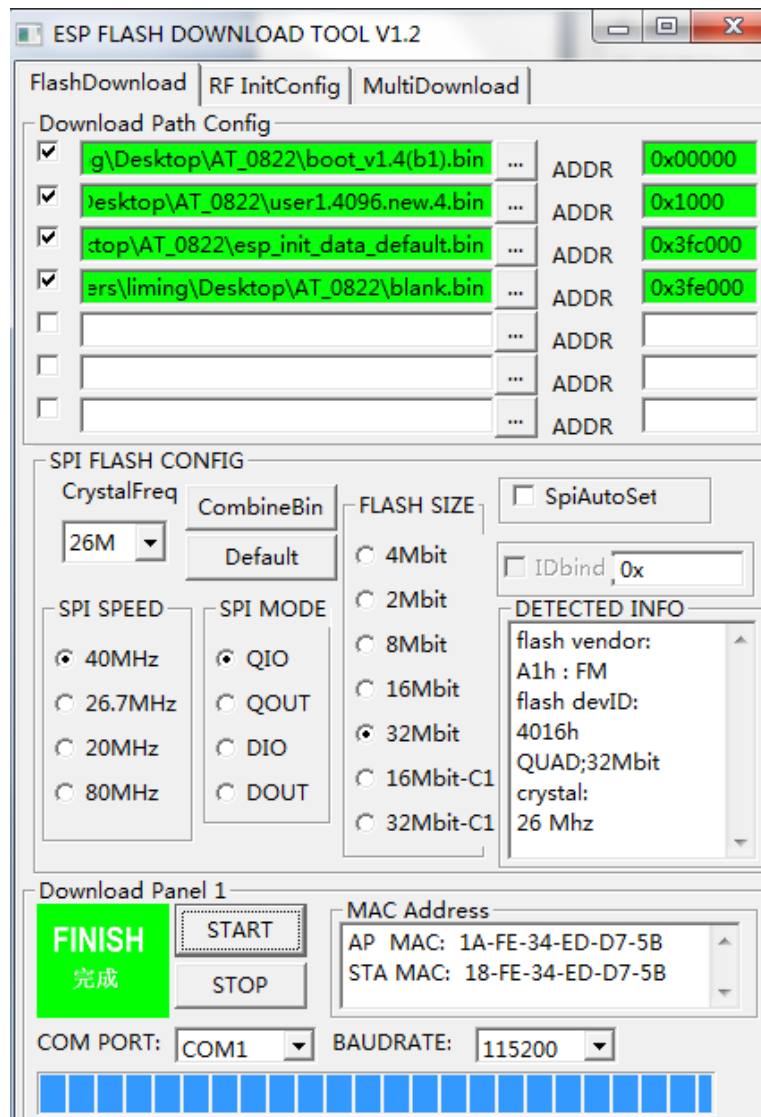


Figure 3-7 Program Download Complete

4. Software Testing of AT Version

4.1 Auxiliary Tool

- Xiao e WiFi module (WT8266-S1)
- WiFi Test Board
- Android 4.0 Version above
- PC
- Xiao e APP
- 8266 configuration tool (PC side)

4.2 Test Environment

WiFi module and mobile phone (or PC) need to be connected within the same network, you can also connect to a router, you can connect your phone to the module.

4.2.1 SoftAP Mode

Phone (or PC) and WiFi module on the router, the phone (or PC) is connected directly to the router, the module link to the router through AT + CWJAP = "SSID", "PWD"

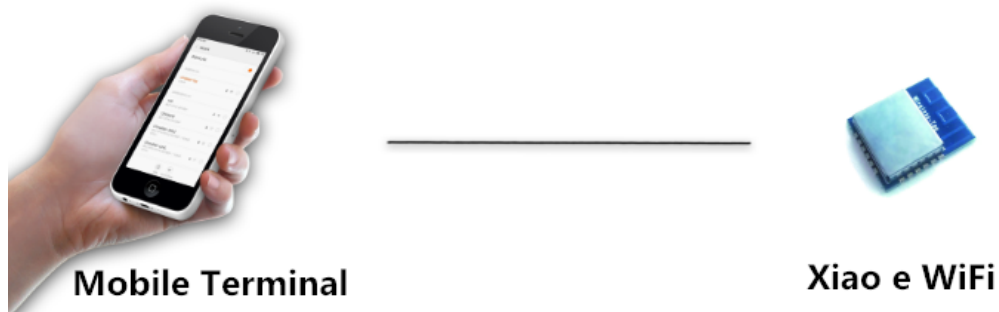


Figure 4-1 SoftAP Network Connection Mode

4.2.2 Station Mode

Phone (or PC) connected to the module, the module needs to be set in server mode.

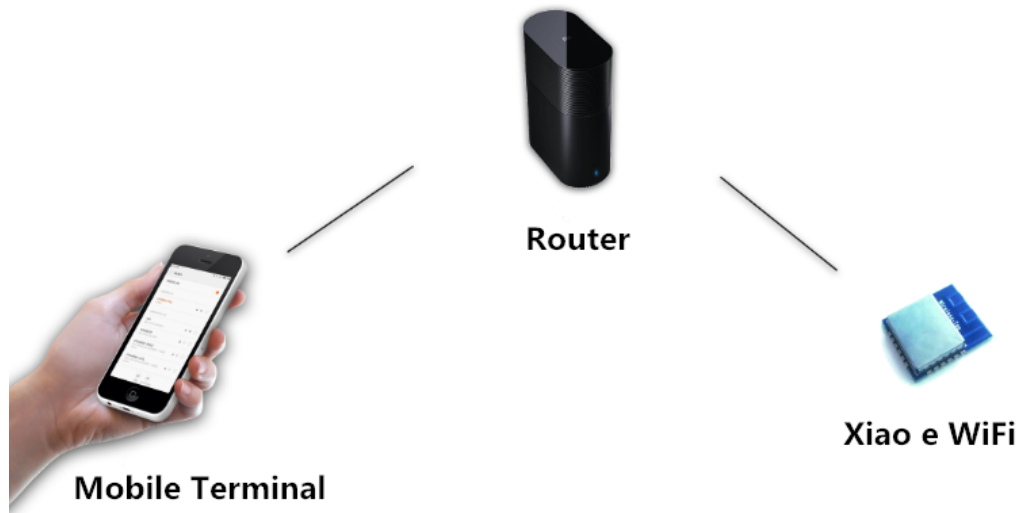


Figure 4.2 Station Network Connection Mode

4.3 Test Steps

4.3.1 SoftAP Mode

Module acts as a wireless access node in the network role, mobile phones, computers, WIFI modules and other wireless access devices, etc. can be connected to the module as the Station, formed into a LAN. In this example, module wireless connected with mobile phone, PC terminal monitor the module's data transceiver situation via configuration software.

Test Environment :

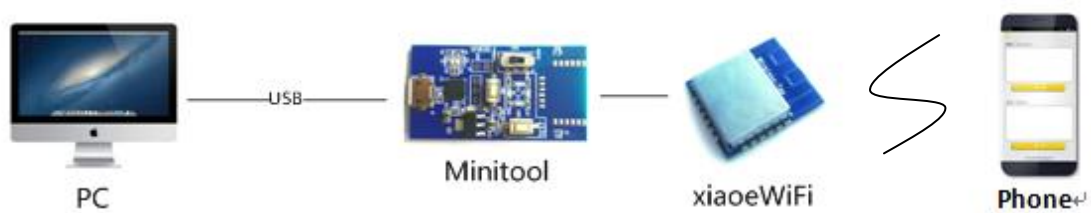


Figure 4-3 SoftAP Test System Diagram

Setting Steps :

1. Open the testing software of Xiao eWiFi module, the software will automatically recognize port numbers, and module current mode, the baud rate to 115200. Click "Open serial port" button, the software will display "OK" in the receiving areas , it indicates that the module has been successfully connected with the test software.

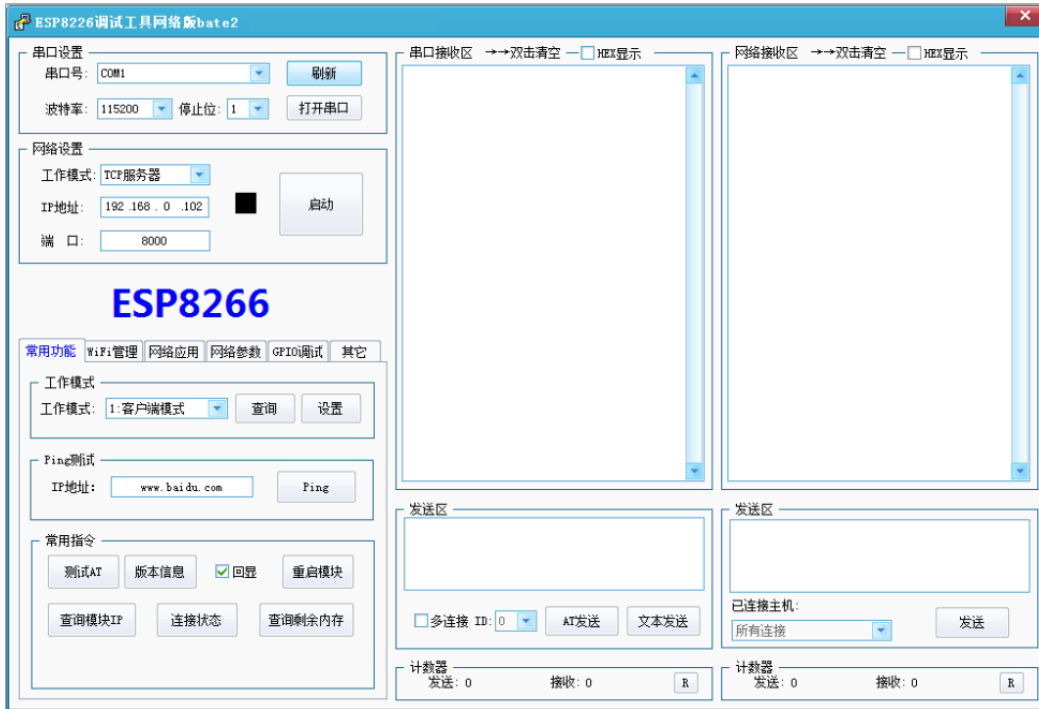


Figure 4-3 Testing Software of Xiao eWiFi Module

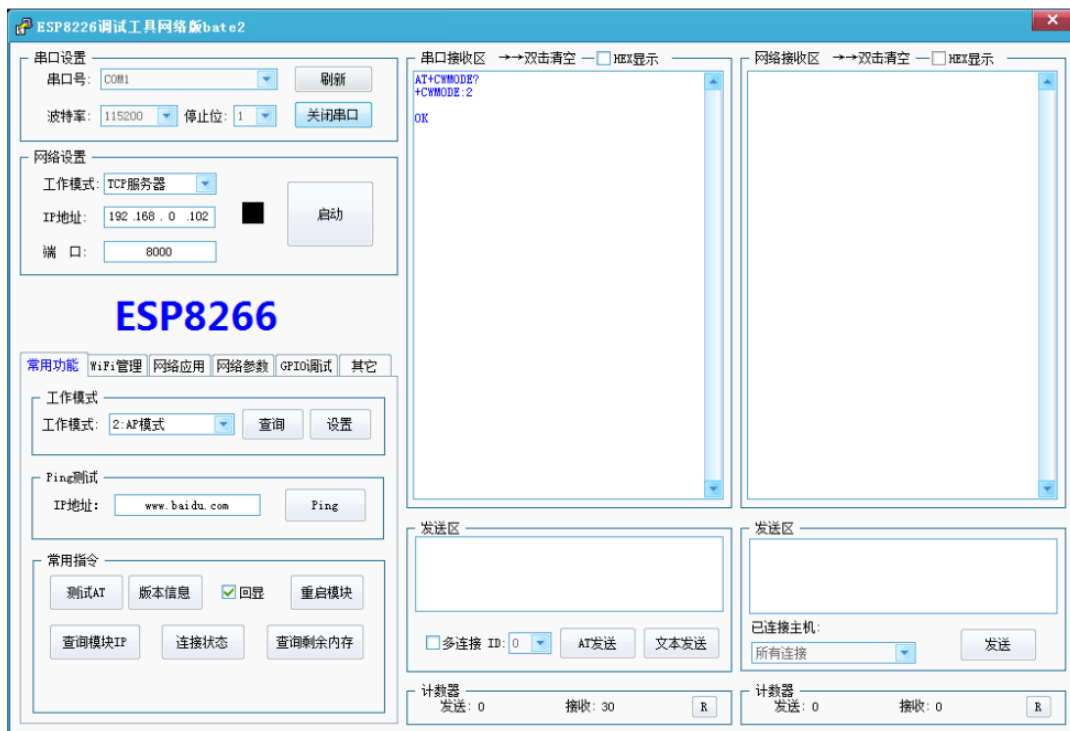


Figure 4-4 Test Software - Module Connection

2. In "common functions" options , please select "AP Mode" in "working mode" and click the "Settings Button". when serial receiving area shows "OK" , it means the setting is completed. Please refer to figure 4-5.

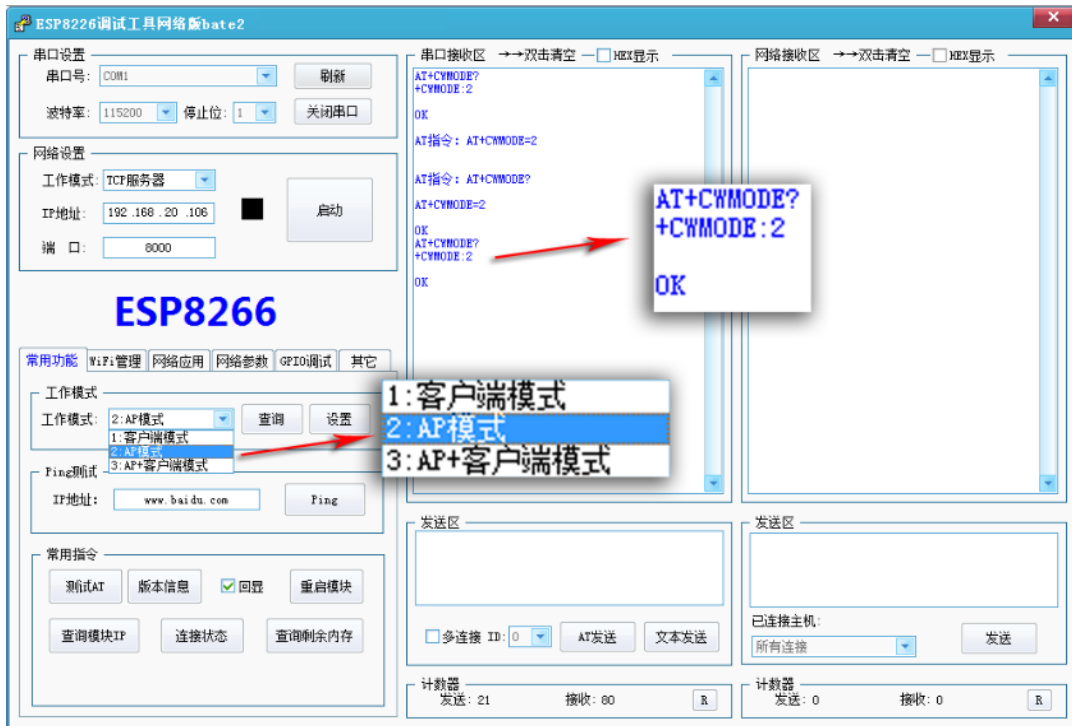


Figure 4-5 Test Software- AP Mode Setting

3、 In the "WiFi Management" option, configure SSID (network name) and password for module, and click the "Settings" button, serial port receiving area will show following figure, it means setting is OK.

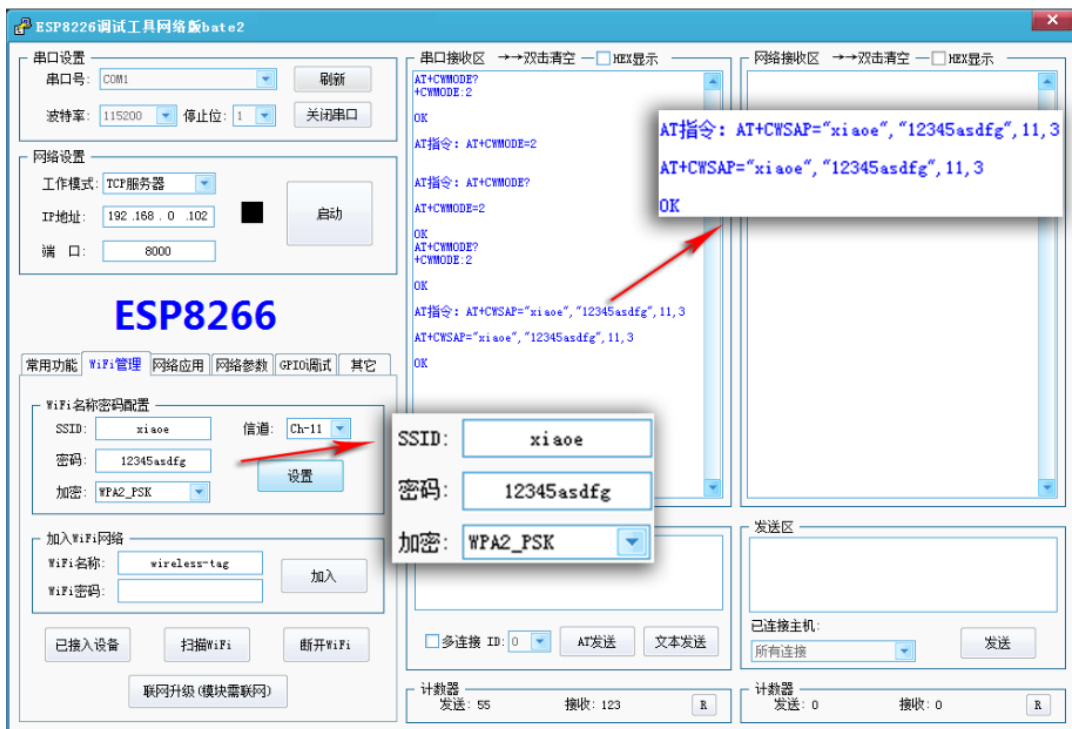


Figure 4-6 Test Software -SSID Password Settings

4、 In "Network Parameters" option, read "AP IP Address", acquisition IP address of

module (Note: the IP address can be customized, the user only need to enter custom IP values in the format of normal IP address, and can change it by write operation, after success, it will return to OK).



Figure 4-7 Test Software--- Read and Write IP

5、In "Network Application" option, in "Transparent Transmission Settings", select "Multi-Connection Mode", set the port number for the module in "Server Mode", and click "Open Service."

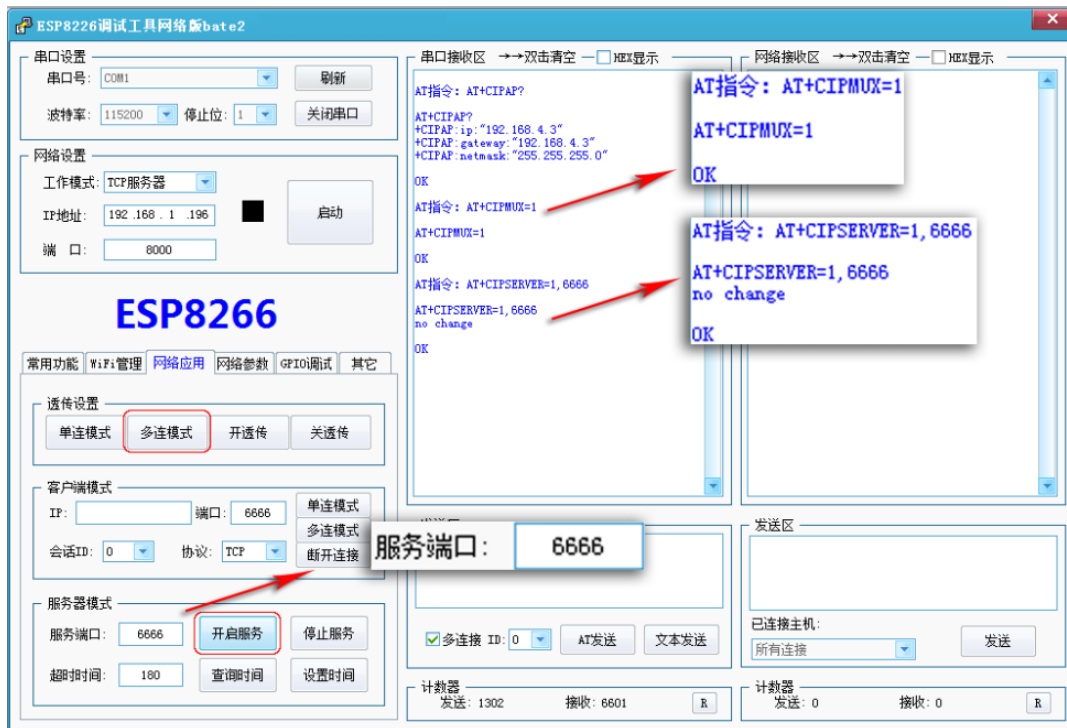


Figure 4-8 Test Software - Connection Mode



Description:

Here, the port number is "6666", later when test module with APP, need to be consistent.

- 6、Open the terminal device which needs to connect with the module, connected to module WiFi network in WiFi settings.



Figure 4-9 APP- Network Connection

7、Open the "Xiao e APP" in the terminal equipment, in the customer terminal mode, set the IP address (consistent with the WiFi module address) and port (consistent with the WiFi module port number), click the "TCP Protocol" and connect with the WiFi module.



Figure 4-10 APP-IP Port Settings

8、After APP and WiFi module successfully connected, APP will return the IP address and port number of the module. Xiao eWiFi module test software (PC end) returns "0, CONNECT", as

shown below.

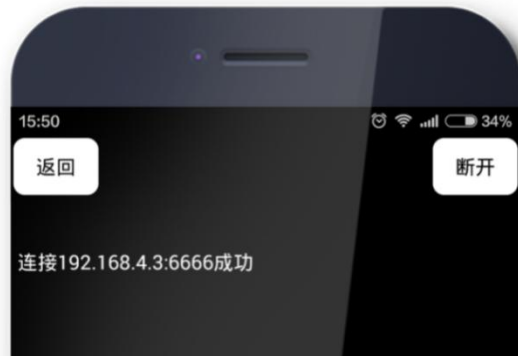


Figure 4-11 APP-IP Port Settings

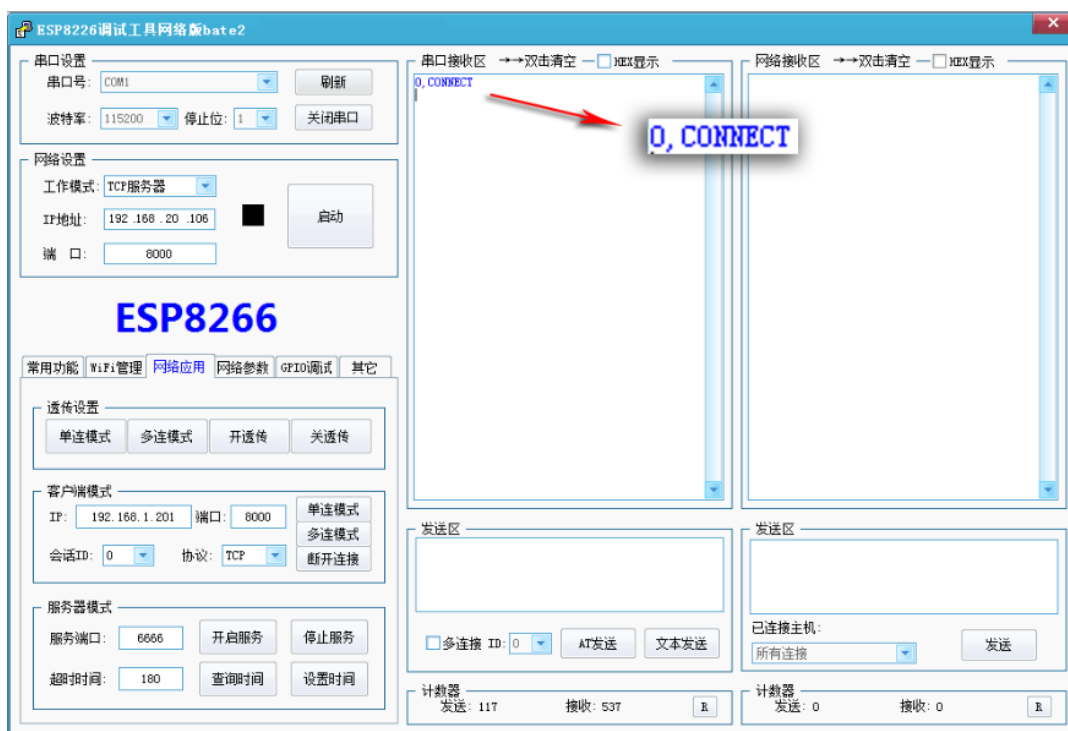


Figure 4-12 Testing Software -IP Port Settings

9、Send data to the APP from Xiao e WiFi module testing software (PC) through WiFi module, need to select "Multi-Connection" in the transmission area.



Figure 4-13 Testing Software - Data Transmission (AP mode)

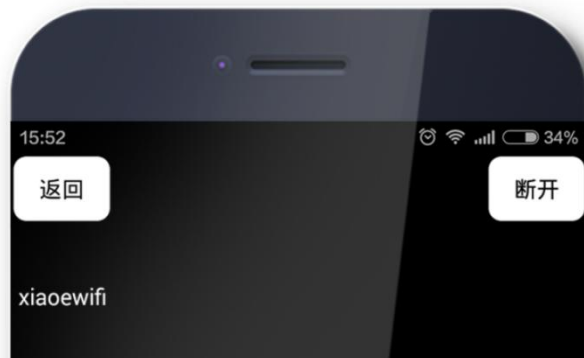


Figure 4-14 APP - Data Receiving (AP Mode)

10、Send data to the module by the APP, input "WT8266-S1" in the input box , click send.
On PC testing software, you can view the data transmitted from the APP.



Figure 4-15 APP - Data Transmission (AP Mode)

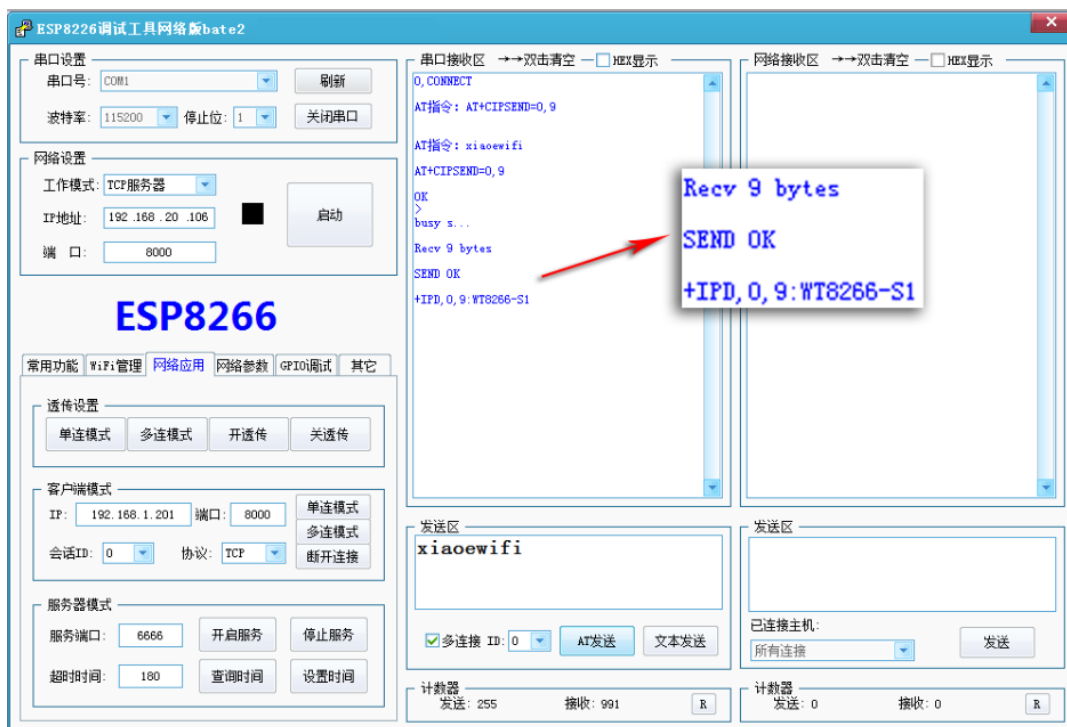


Figure 4-16 Testing Software - Data Receiving (AP Mode)

4.3.2 Station Mode

Module work as a station and connect to router, mobile phone (or PC) connect to the same

local network, mobile phone and module build up network communications so as to realize data exchange between module and mobile phone.

Test Environment:

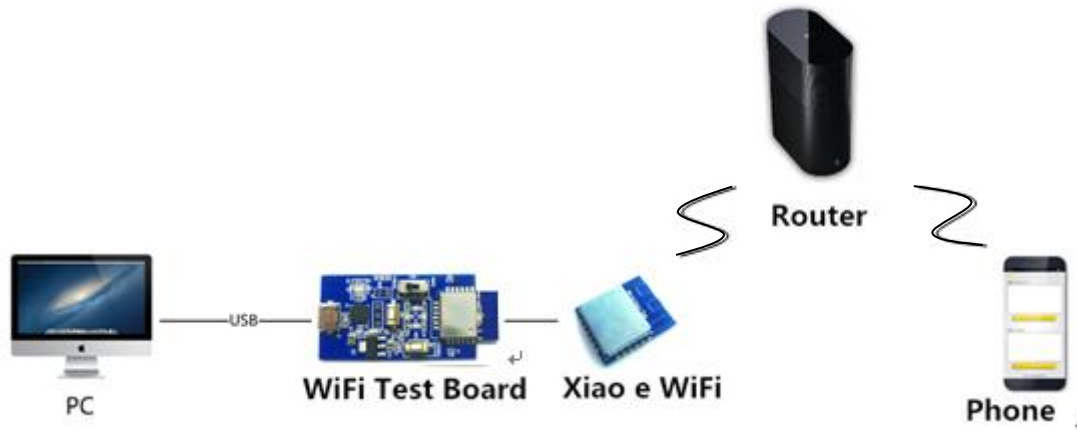


Figure 4-17 Test System Figure of Station

Setting Steps:

- 1、 The first step is the same to that of softAP mode.
- 2、 In "Common Functions" option, select "Client Mode" for module's "Work Mode" and click the "Settings" button, serial port receiving area will display the following figure which means the setting is completed.



Figure 4-18 Test Software - Mode Setting

3、In the "WiFi Management" option, click "Scan WiFi", find existed WiFi network, set the network's name and password that need to add in "Join WiFi network" option.

When serial reception area display as figure 4-20, it means complete to join in the network.

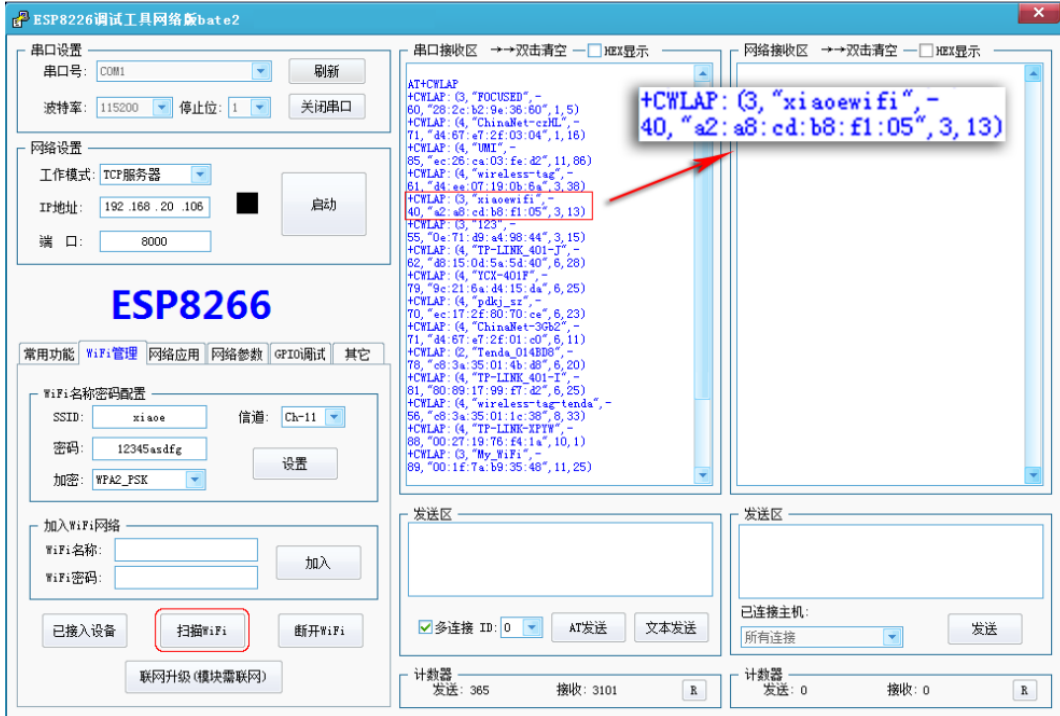


Figure 4-19 Testing Software - Scan WiFi

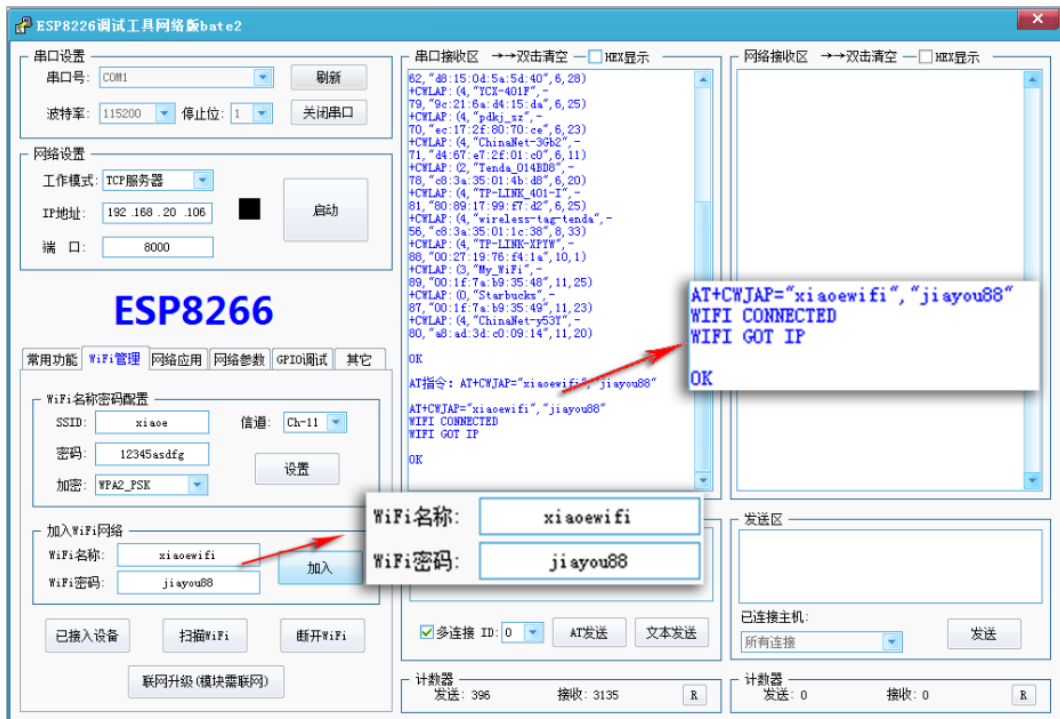


Figure 4-20 Test Software - Join WiFi

4、Open the terminal device, connect the terminal device to WiFi network firstly, the network need to be consistent to that of WiFi module.



Figure 4-21 APP-WiFi Settings

5、Open APP, select "server" mode, set the port to "6666" (random setting, consistent with the PC side), click "TCP Protocol" to enter the receive and transmission interface. Click the "Start" button in the upper right corner, so that the terminal device successfully created a TCP server. After successfully created, the server will automatically obtain an IP address, set a good server port before return.

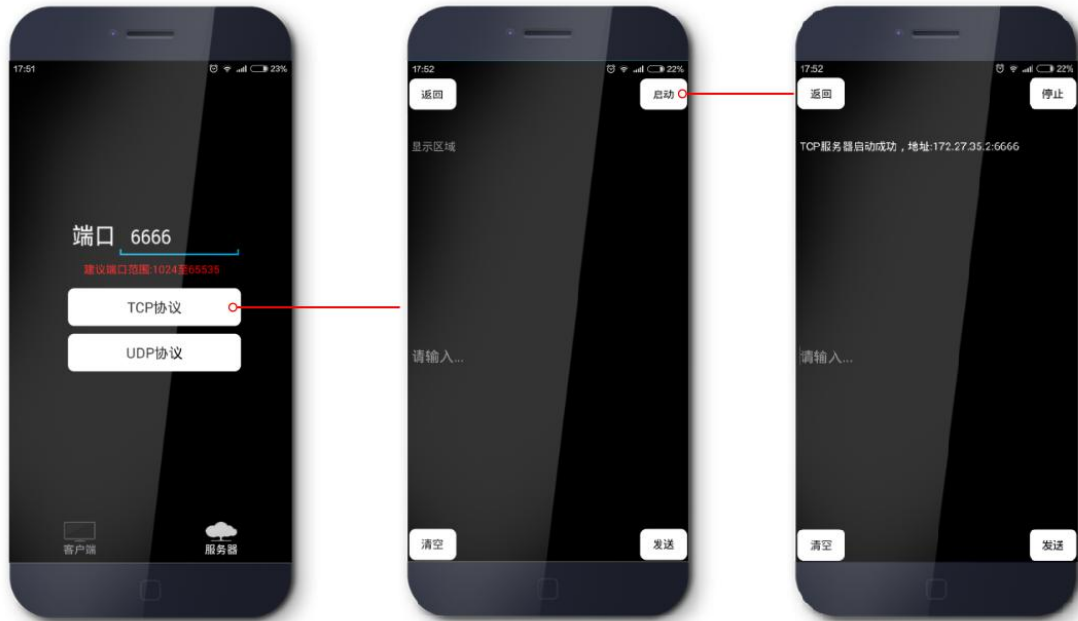


Figure 4-22 APP- Server Settings



Figure 4-23 APP- IP Port of Server

6、 Select "Network Applications", select "Multi-Connection Mode" in "Transparent Transmission Settings", and then enter the server's IP and port number in "Client Mode", and click the "Multi-Connection Mode". After successful setting, the serial receive area returns the following figure.

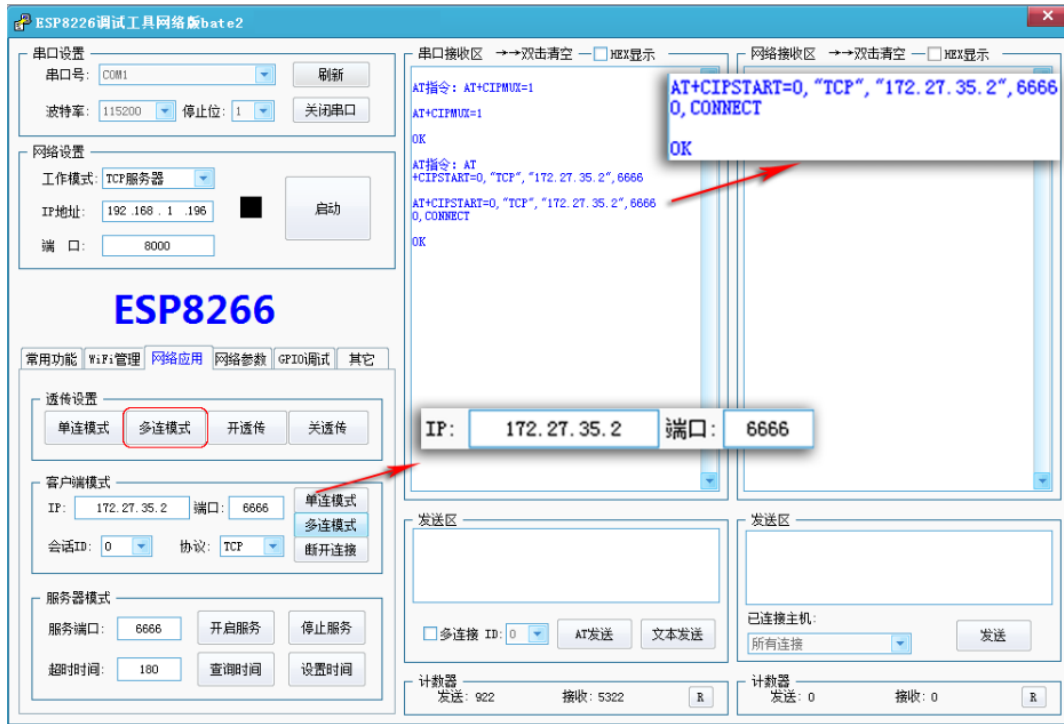


Figure 4-24 Test Software - Server IP Port Settings

7、Sent data to server by the test software data via WiFi module, enter data "xiao_e_wifi" in the transmission area and click "AT Send" button. You can see the data from PC test software in APP receiving area.



Figure 4-25 Test Software - Data Transmission (Station Mode)



Figure 4-26 APP - Data Reception (Station Mode)

8、Server (APP) sends data to the module, input data "www.wireless-tag.com" in APP sending area , click "send" button, you can see the data sent from APP in receiving area.



Figure 4-27 APP - Data Transmission (Station Mode)

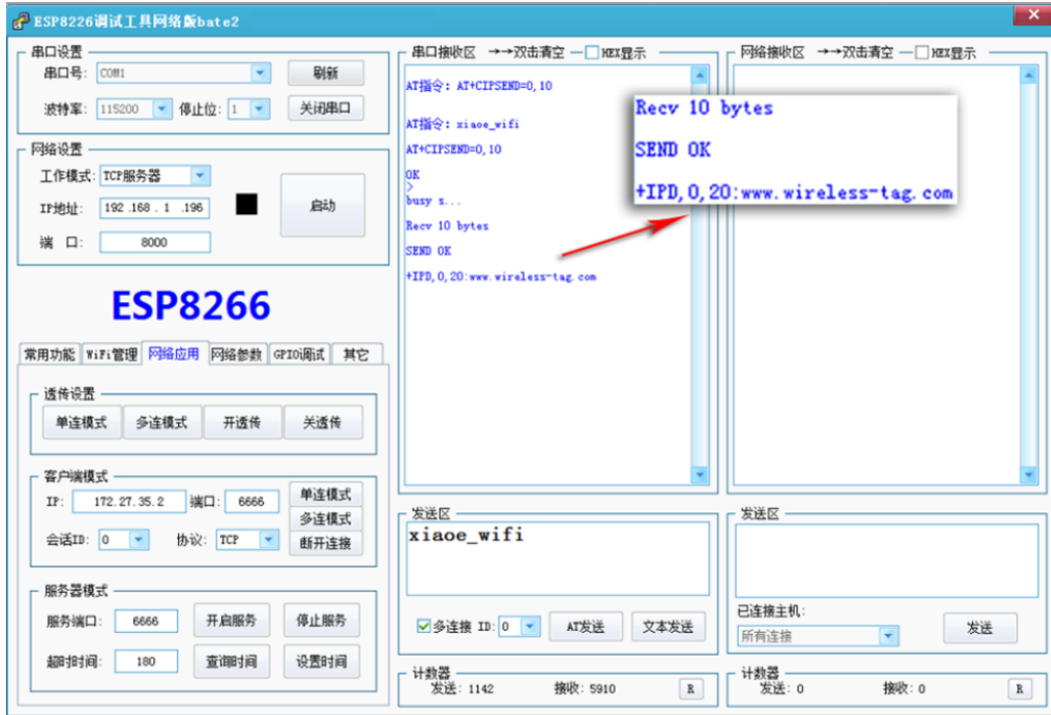


Figure 4-28 Test Software - Data Reception (Station Mode)

5. Product Trial

- Aliexpress store: <http://www.aliexpress.com/store/1784058>
- Forum: bbs.wireless-tag.com
- QQ Group : 214946279



- Support E-mail: technical@wireless-tag.com