

Preliminary Specification

Dipole Antenna

- RFDPA391300SBAB8G1 for Single Band 2.4 GHz Application

ELECTRICAL CHARACTERISTICS

Item	Specification
Working Frequency Range	2.4 ~ 2.5 GHz (Note-1)
Gain	9 dBi(Typ.)
Return Loss	-10dB(Max)
VSWR	2 max.
Polarization	Linear
Radiation Pattern	Omni-directional
Impedance	50Ω

*Note 1. Central Frequency should be defined after customers' application approval.

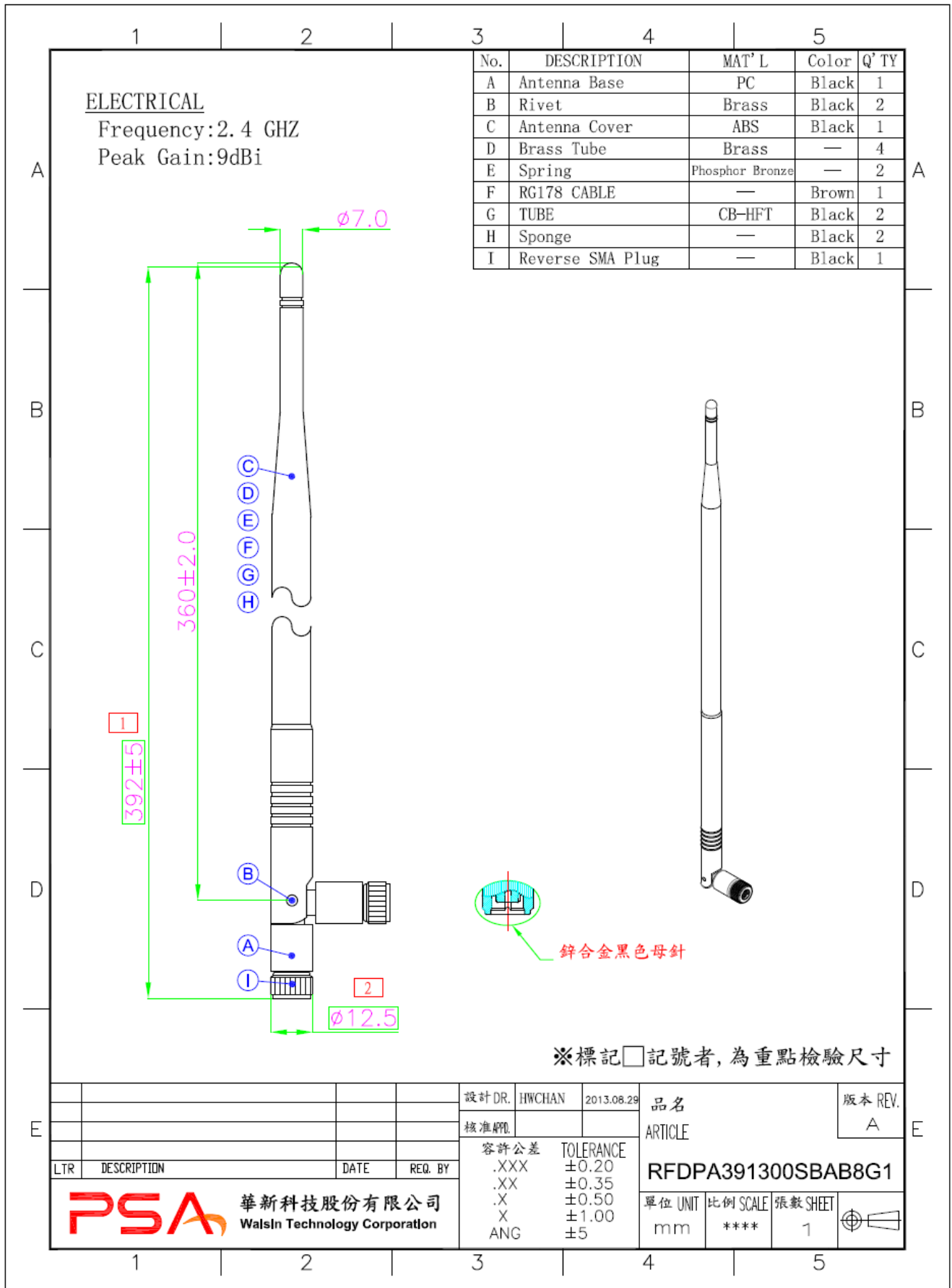
MATERIAL TABLE

Items	Description
Cable	RG178(Brown)
Antenna Cover	ABS
Antenna Base	PC
Connector	Reverse SMA Plug
Color	Black
Brass Tube	Brass
Spring	Phosphor Bronze
Tube	CB-HFT

ORDERING RULE

RF	DPA	3913	00	S	B	A	B	8	G1
Type Code	Product Code	Dipole Dimension (Unit: mm)	Cable Length (unit: cm)	Connector Brand	Type of Connector	Application	Project status	Wire Diameter	Project
Walsin RF Device	DPA: Dipole Antenna	Per 2 digits of length, width e.g.: 3913 Length 392mm, Width 13mm	2 digits for cable length e.g.: 00 None Cable	A: N C:MCX D:IPEX III E: IPEX IV F: IPEX A13 H: Hirose I: IPEX M: MMCX S: SMA T: TNC U:MURATA N: None	A: Reverse Female B: Reverse Male F: Female M: Male N: None	0: 0GHz 3: 3GHz 5: 5 GHz 6: 6GHz A: 2.4GHz ISM band B: GSM 900/1800 dual band G: GPS band L: 2.4/5.2/5.8 GHz tri-band N: NFC T:LTE band W: WCDMA band	B: MP T:During Test X: Pile Run	0:None 1:∅0.81 3:∅1.13 6:RG316 7:∅1.37 8:RG178	01~99 series number

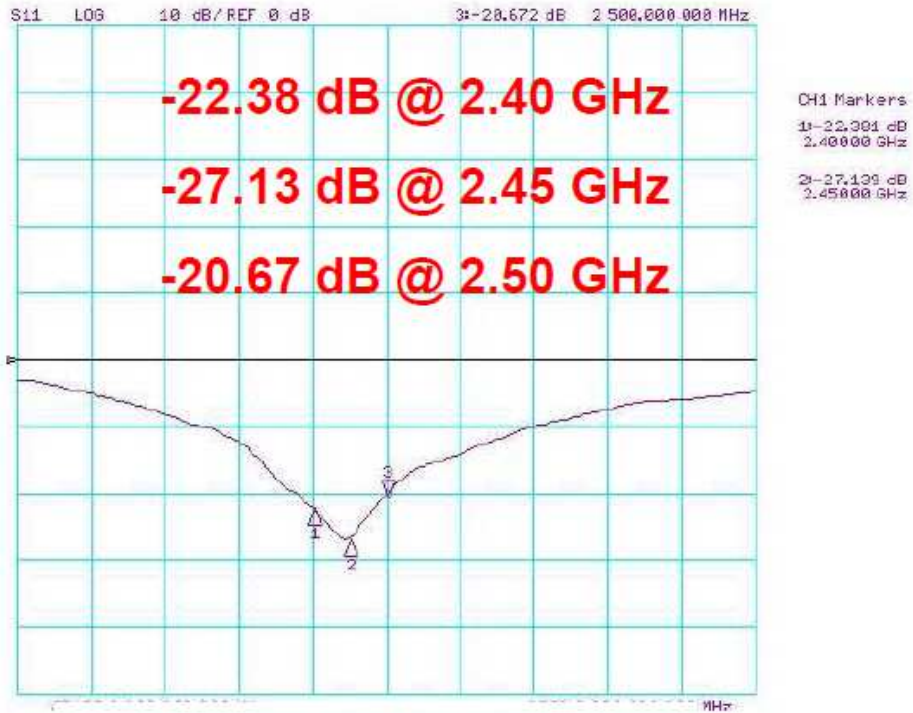
DIMENSIONS



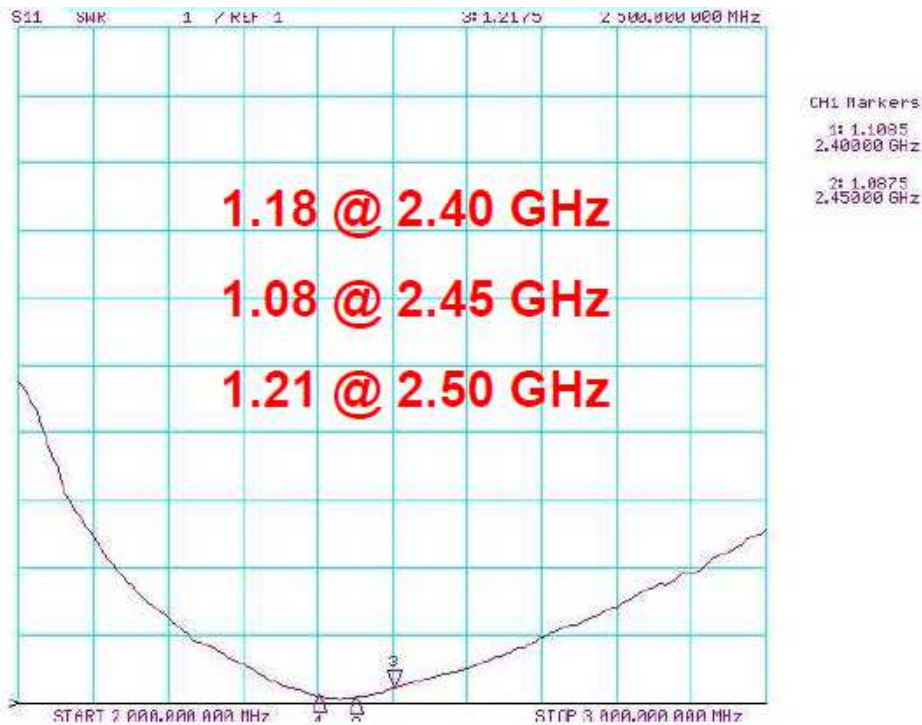
Test Report

ELECTRICAL CHARACTERISTICS

Return Loss

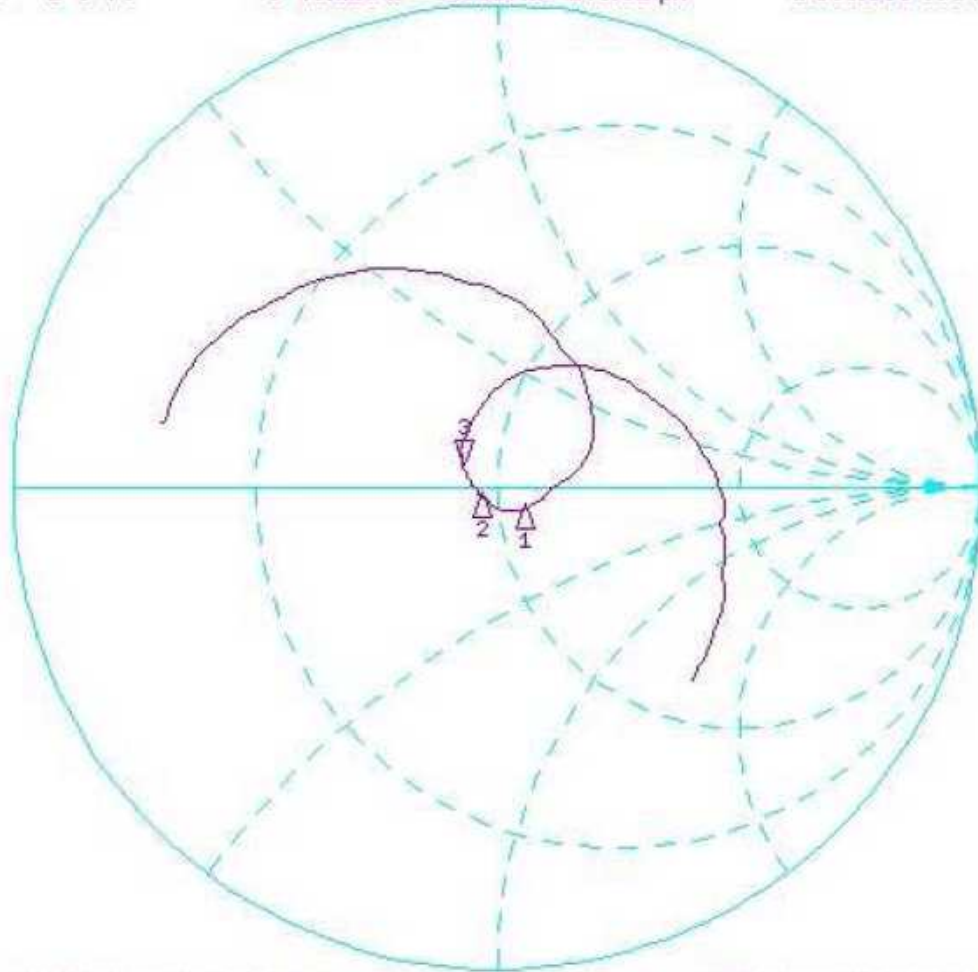


VSWR



Smith Chart

S11 1 U FS 3: 43.129 Ω 3.8613 Ω 245.82 pF 2 500.000 000 MHz



CH1 Markers
1: 55.648 Ω
-4.5527 Ω
2.40000 GHz
2: 46.648 Ω
-1.3984 Ω
2.45000 GHz

START 2 000.000 000 MHz

STOP 3 000.000 000 MHz

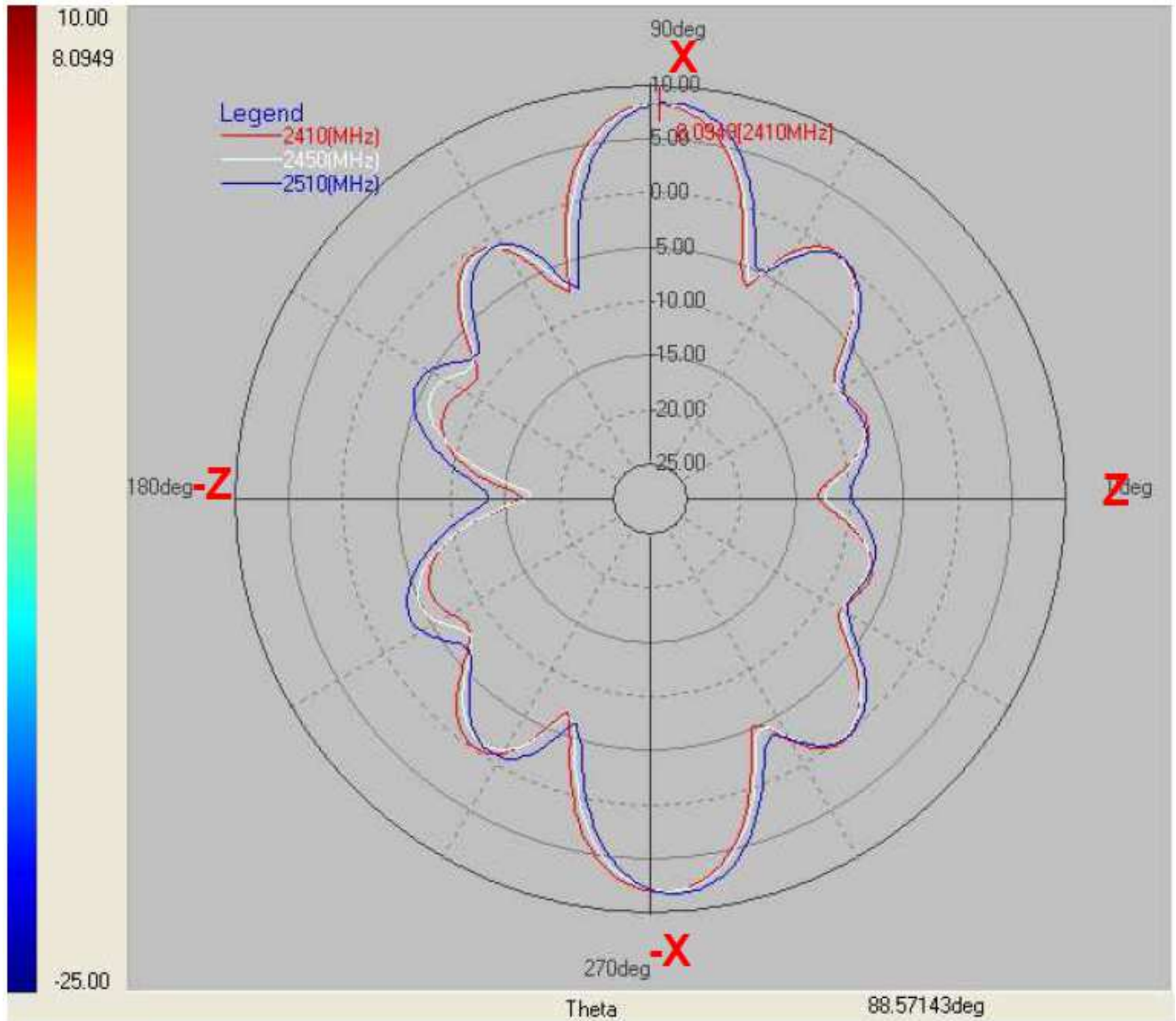
RADIATION PATTERN

2400~2500 MHz

X-Z Plane

Phi=0.00deg

Gain . dB



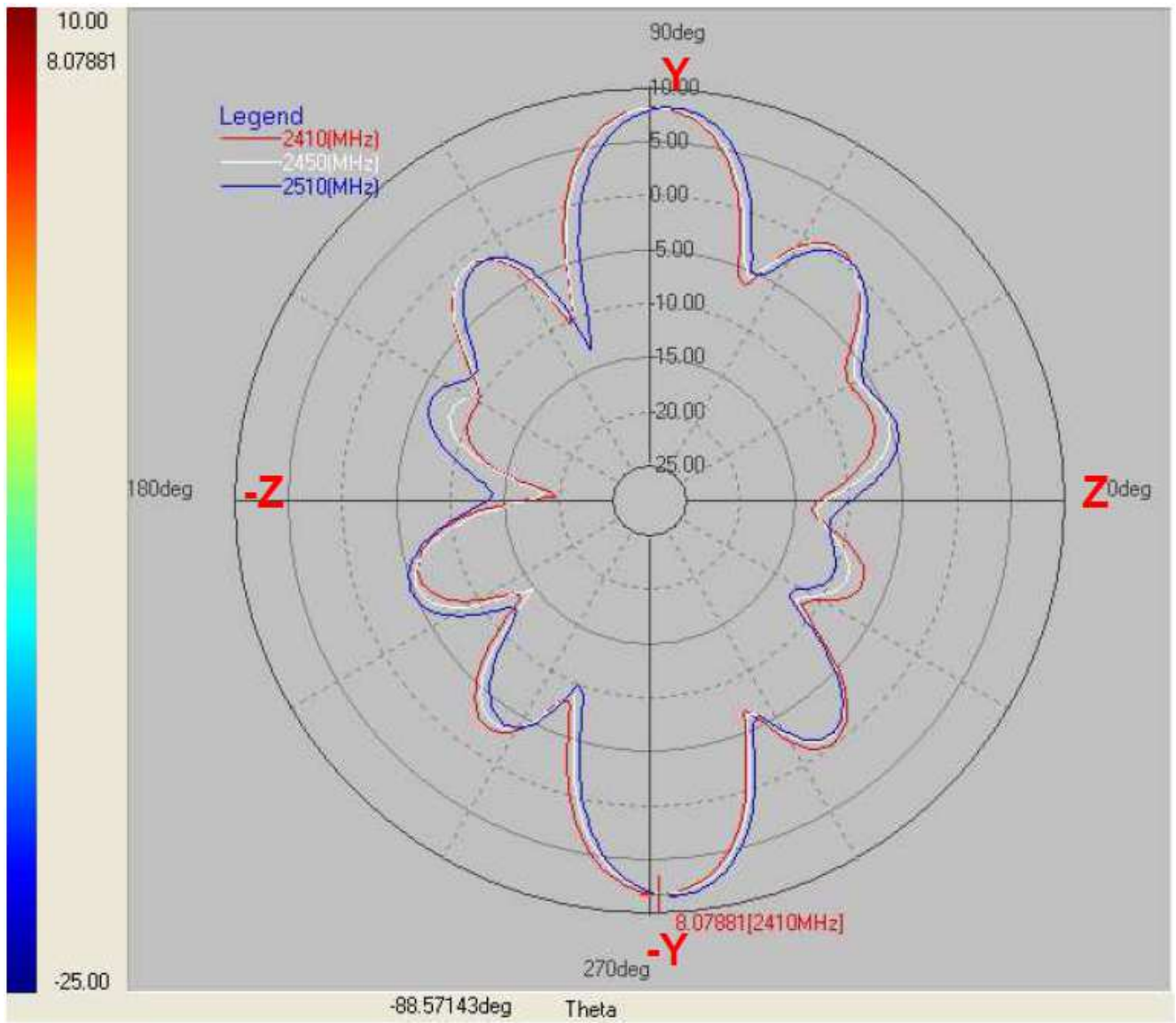
Layer	Max value	Min value	Average
2400(MHz)	8.11	-16.63	0.17
2450(MHz)	8.15	-17.40	0.11
2500(MHz)	8.24	-13.54	0.32

2400~2500 MHz

Y-Z Plane

Phi=90.00deg

Gain . dB



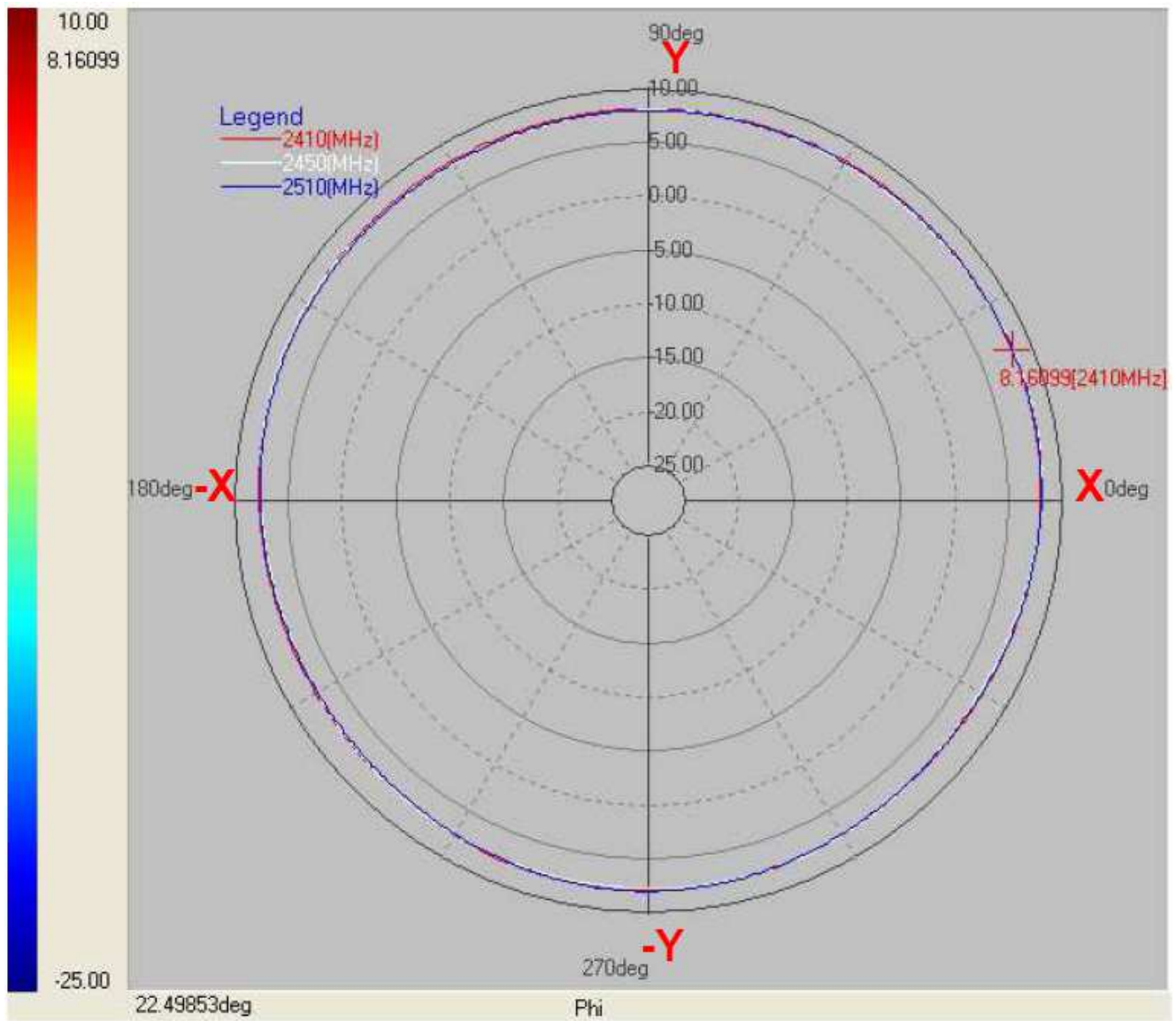
Layer	Max value	Min value	Average
2400(MHz)	8.12	-19.73	0.03
2450(MHz)	8.25	-18.61	-0.02
2500(MHz)	8.24	-13.86	0.03

2400~2500 MHz

X-Y Plane

Theta=90.00deg

Gain . dB



Layer	Max value	Min value	Average
2400(MHz)	8.16	7.23	7.78
2450(MHz)	8.28	7.06	7.68
2500(MHz)	8.18	7.03	7.69

Package

PSA 蘇州華科電子有限公司

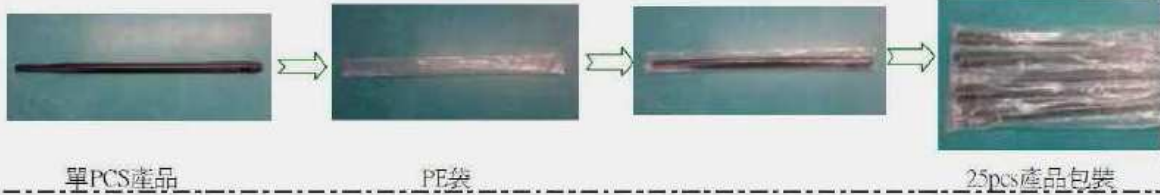
制品規格書

版別：1.0.0

客戶	----	品名	RFDPA391300SBAB8G1	發行編號		頁次	
----	------	----	--------------------	------	--	----	--

產品包裝圖示：

圖示一



圖示二



圖示三



產品包裝說明：

1. 將每PCS產品裝入1小PE袋中，然後將小PE袋產品裝入大PE袋中25PCS/袋（如圖一）
2. 將珍珠棉放入外箱中（如圖二）
3. 將大PE袋產品放入外箱中，每箱裝200PCS,上下各放1片珍珠棉.
4. 產品標籤貼到大PE袋上.

FORM NO: