

0.56 Inch Four Digit Display
OSL40562-IX (Common Anode type)
OSL40562-LX (Common Cathode type)

■ Features

- 0.56 Inch Four Digit Display
- Long lifetime operation
- IC compatible
- Low power dissipation

■ Applications

- Counting device
- Clock

■ Photo



■ Absolute Maximum Rating (Ta=25°C)

Item	Symbol	Value		Unit
		RA/R/YG/Y	B/G/W	
DC Forward Current	I _F	20	20	mA
Pulse Forward Current#	I _{FP}	100	100	mA
Reverse Voltage	V _R	5	5	V
Power Dissipation	P _t	44	66	mW
Operating Temperature	Topr	-30 ~ +70		°C
Storage Temperature	Tstg	-40~ +85		°C
Lead Soldering Temperature(1.6mm from seating plane)	Tsol	260°C/5sec		°C

#Pulse width Max.10ms Duty ratio max 1/10

■ Electrical -Optical Characteristics (Ta=25°C)

Part Number	Color		V _F (V)			I _R (μA)	I _v (mcd)			λD(nm)		
			Min.	Typ.	Max.	Max.	Min.	Typ.	Max.	Min.	Typ.	Max.
			I _F =20mA			V _R =5V	I _F =20mA					
OSL40562-IW(LW)	White	W	2.8	3.1	3.6	20	-	90	-	X=0.27,Y=0.28		
OSL40562-IB(LB)	Blue	B	2.8	3.1	3.6	20	-	50	-	460	465	470
OSL40562-IG(LG)	Pure Green	G	2.8	3.1	3.6	20	-	200	-	515	520	530
OSL40562-IYG(LYG)	Yellow Green	YG	1.8	2.1	2.6	20	-	12	-	565	571	575
OSL40562-IY(LY)	Yellow	Y	1.8	2.1	2.5	20	-	60	-	585	590	595
OSL40562-IR(LR)	Red	R	1.8	2.1	2.5	20	-	30	-	625	630	640
OSL40562-IRA(LRA)	High Luminance Red	RA	1.8	2.1	2.5	20	-	100	-	620	625	630

*1 Tolerance of measurements of chromaticity coordinate is ±10%

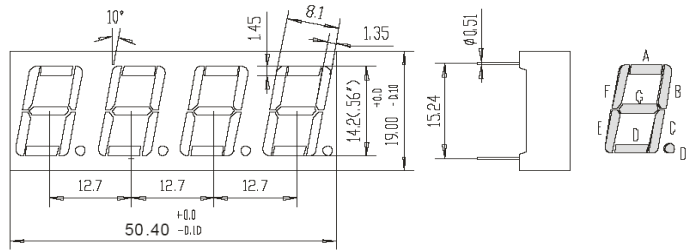
*2 Tolerance of measurements of dominant wavelength is ±1nm

*3 Tolerance of measurements of luminous intensity is ±15%

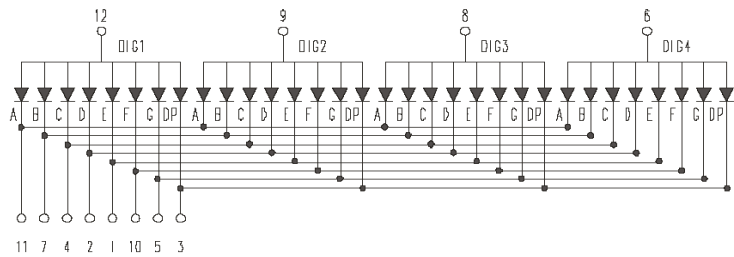
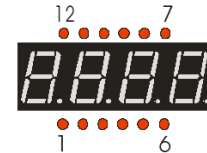
*4 Tolerance of measurements of forward voltage is±0.1V

Package Dimensions and Pin Function

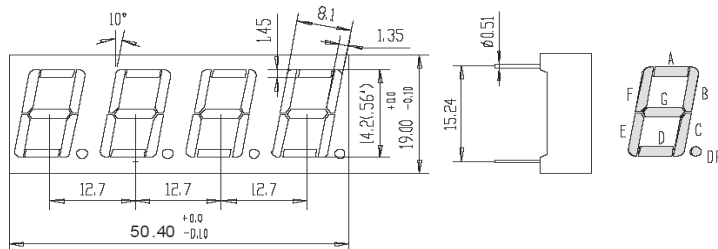
**OSL40562-IX
(Common Anode type)**



Note:
1, Unit : mm (Tolerance: ±0.25mm unless otherwise noted)
2, The slope angle of any PIN may be ±5.0° Max



**OSL40562-LX
(Common Cathode type)**



Note:
1, Unit : mm (Tolerance: ±0.25mm unless otherwise noted)
2, The slope angle of any PIN may be ±5.0° Max

