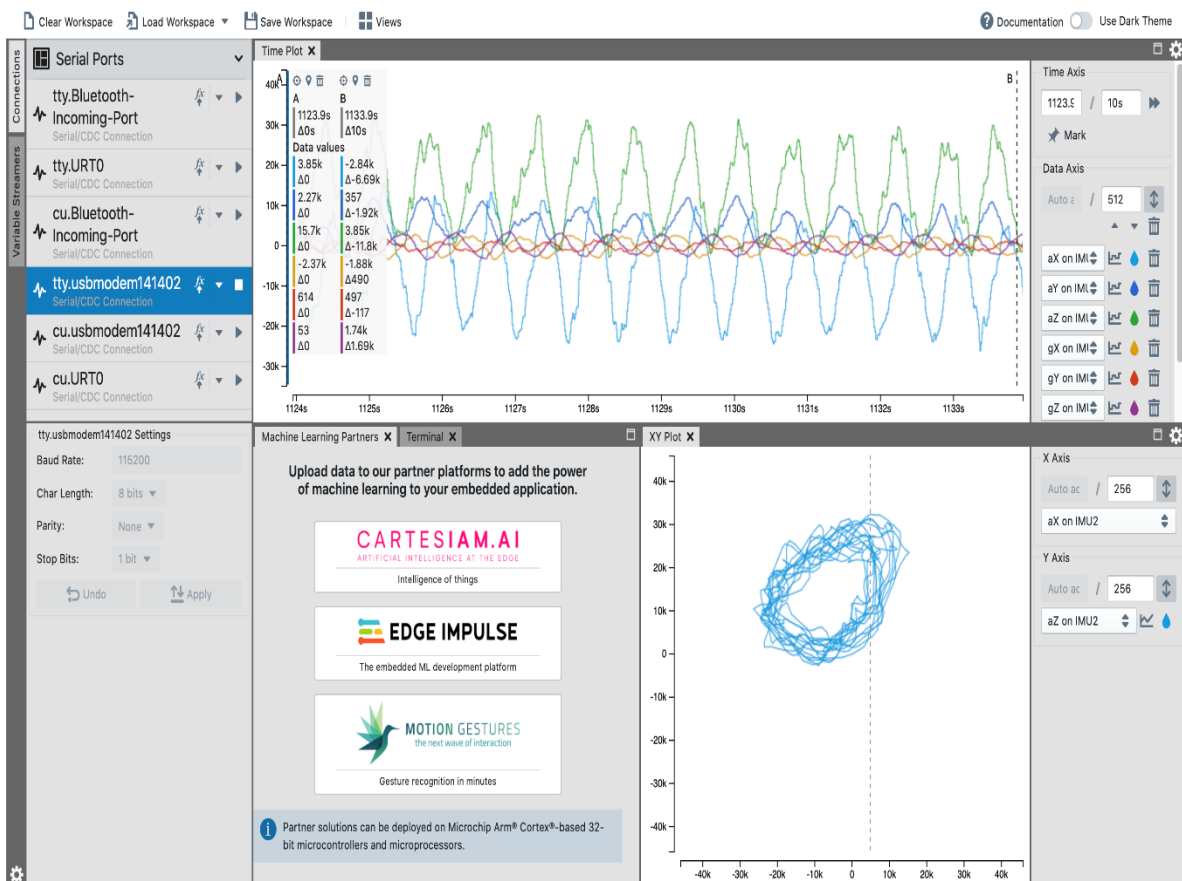


ML Plugin User's Guide Brief

Please goto <https://microchipdeveloper.com/machine-learning:ml-plugin> for the full version

Objective

This guide will teach you how to use the ML plugin to capture and transmit your data to our partner platforms where you can develop machine learning solutions that can be deployed in your embedded application. The ML plugin works within MPLAB Data Visualizer so that you can capture a live data stream from your target device, select the desired data region, and then upload it to the platform of your choice.



Our Machine Learning Partners

CARTESIAM.AI

ARTIFICIAL INTELLIGENCE AT THE EDGE

Cartesiam

- Platform: [Nano Edge AI Studio](#)
- Output: [Nano Edge AI Library](#) (Static C library)

With the ML plugin, you can log your data to a file that can be imported into the Nano Edge AI Studio where you can develop anomaly detection solutions that learn at the edge. To learn more visit the [Cartesiam website](#).



Edge Impulse

- Platform: [Edge Impulse Studio](#)
- Output: [C++ inferencing SDK](#) (Open source C/C++)

With the ML plugin, you can upload your edge data to the Edge Impulse Studio where you can create the next generation of intelligent devices with embedded machine learning. To learn more visit the [Edge Impulse website](#).



Motion Gestures

- Platform: [Motion Gestures SDK](#)
- Output: Gesture Recognition Engine (Static C library)

With the ML plugin, you can define new touch gestures on your target hardware and then upload them to the MG SDK where you can train a machine learning model to recognize your custom gestures. To learn more visit the [Motion Gestures website](#).