

AlGaInP Visible Laser Diode

ADL-66505TL

6-2D-LD66-011_Rev.02

★660nm 50mW 60°C

Reliable High Power Operation

• Features

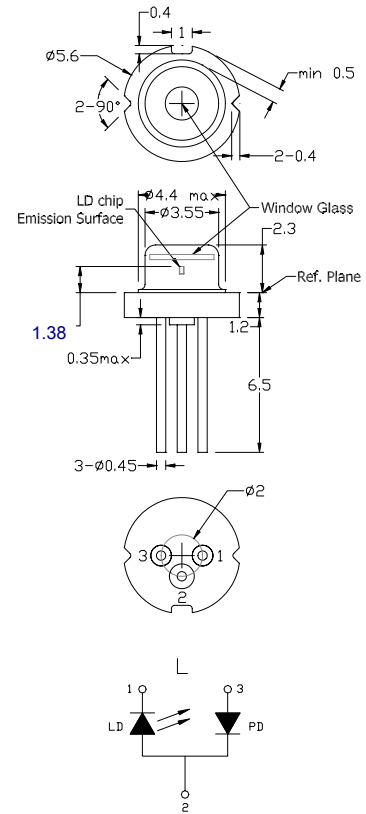
1. Highly reliable
2. Higher power
3. High efficiency
4. Low operating current

• Applications

1. High power Laser modules
2. Industrial laser markers / measuring instruments
3. Medical application

• Absolute maximum ratings

| Parameter | Symbol | Condition | Rating | Unit |
|----------------------|----------|-----------|---------|------|
| Light output power | P_O | CW | 52 | mW |
| Reverse voltage (LD) | V_{RL} | - | 2 | V |
| Reverse voltage (PD) | V_{RD} | - | 30 | V |
| Forward current (PD) | I_{FD} | - | 10 | mA |
| Case temperature | T_C | - | -10~+60 | °C |
| Storage temperature | T_S | - | -40~+85 | °C |



• Electrical and optical characteristics ($T_c=25^\circ\text{C}$)

| Parameter | Symbol | Min. | Typ. | Max. | Unit | Conditions |
|-----------------------------------|------------------------------|------|------|------|-------|--|
| Peak wavelength | λ | 653 | 660 | 667 | nm | $P_o=50\text{mW}$, CW |
| Threshold current | I_{th} | - | 45 | 60 | mA | Kink free |
| Operating current | I_{op} | - | 90 | 120 | mA | |
| Operating voltage | V_{op} | 2.0 | 2.5 | 3.0 | V | |
| Differential efficiency | η | 0.7 | 1.0 | 1.4 | mW/mA | $P_o=45\text{--}50\text{mW}$ |
| Monitor current* | I_m | 0.05 | 0.2 | 0.5 | mA | $P_o=50\text{mW}$, $V_{RD}=5\text{V}$ |
| Parallel divergence angle | $\theta_{ }$ | 6 | 9 | 13 | deg | |
| Perpendicular divergence angle | θ_{\perp} | 13 | 17 | 22 | deg | |
| Parallel FFP deviation angle | $\Delta\theta_{ }$ | -3 | 0 | +3 | deg | $P_o=50\text{mW}$ |
| Perpendicular FFP deviation angle | $\Delta\theta_{\perp}$ | -3 | 0 | +3 | deg | |
| Emission point accuracy | $\Delta x \Delta y \Delta z$ | -80 | 0 | +80 | um | |

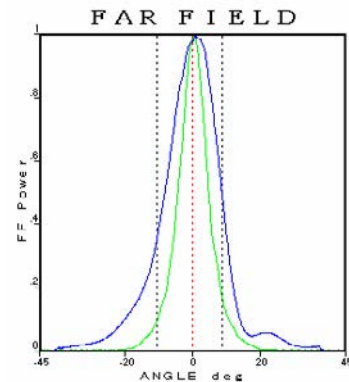
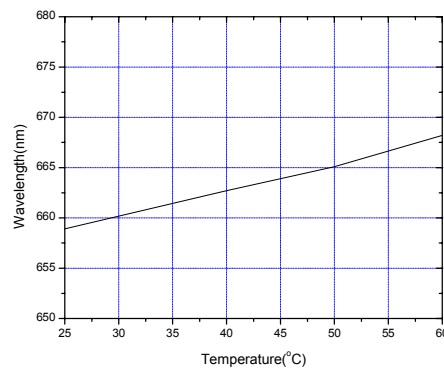
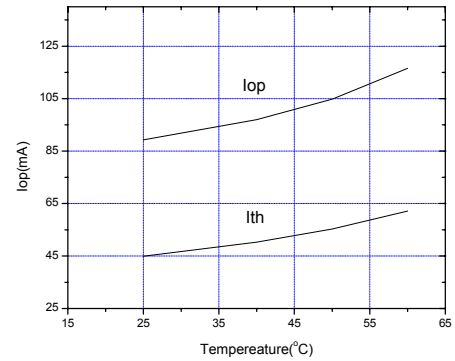
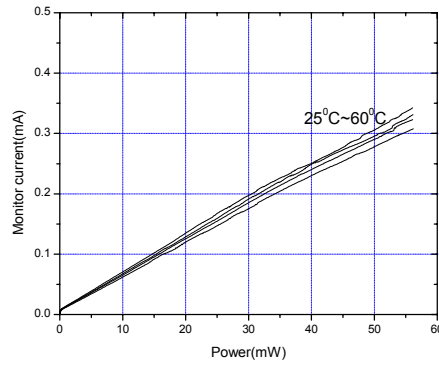
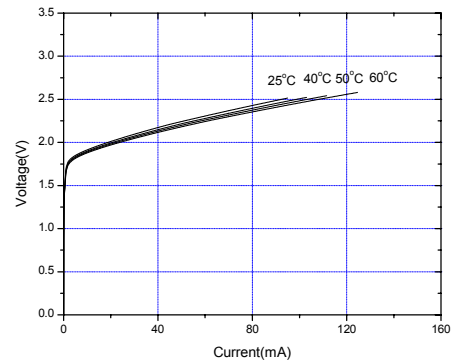
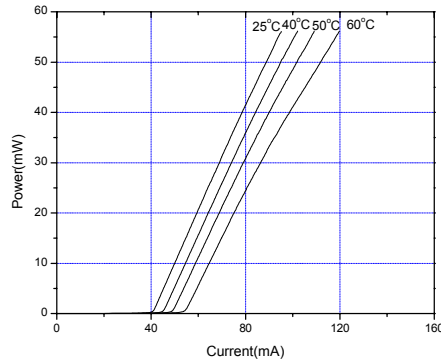
• Precautions

- Do not operate the device above maximum ratings. Doing so may cause unexpected and permanent damage to the device.
- Take precautions to avoid electrostatic discharge and/or momentary power spikes. A change in the characteristics of the laser or premature failure may result.
- Proper heat sinking of the device assures stability and lifetime. Always ensure that maximum operating temperatures are not exceeded.
- Observing visible or invisible laser beams with the human eye directly, or indirectly, can cause permanent damage. Use a camera to observe the laser.
- No laser device should be used in any application or situation where life or property is at risk in event of device failure.
- Specifications are subject to change without notice. Ensure that you have the latest specification by contacting us prior to purchase or use of the product.

* For reference only. Contents above are subject to change without notice.

AlGaInP Visible Laser Diode

ADL-66505TL
6-2D-LD66-011_Rev.02



* For reference only. Contents above are subject to change without notice.