

Data Sheet

2571 Appliance Inlet

CONTENT

1	GENERAL DESCRIPTION	2
2	DIMENSIONS	2
3	ELECTRICAL DATA	4
3.1	GENERAL :	4
3.2	DIAGRAMS	4
4	MECHANICAL DATA	5
4.1	MOUNTING :	5
4.2	TERMINALS :	5
4.3	PACKING AND WEIGHT :	5
5	MATERIALS	5
6	ENVIRONMENTAL CONDITION	6
6.1	TEMPERATURES	6
6.2	VIBRATION AND SHOCK RESISTANCE :	6
7	APPROVALS	6
8	CONFIGURATION CODE	7

Product Documentation					Data Sheet 2571 Appliance Inlet		
owner	creation date	release date	released by	change order no	rev	page	0105.1974
sariogar	10.02.2021	23.03.2021	vetersa	2020483	D	1 of 7	

1 General Description

General :

The 2571 series are appliance inlet 2.5A, protection class II, for pin temperature max. 70°C and screw-on or rivet mounting.

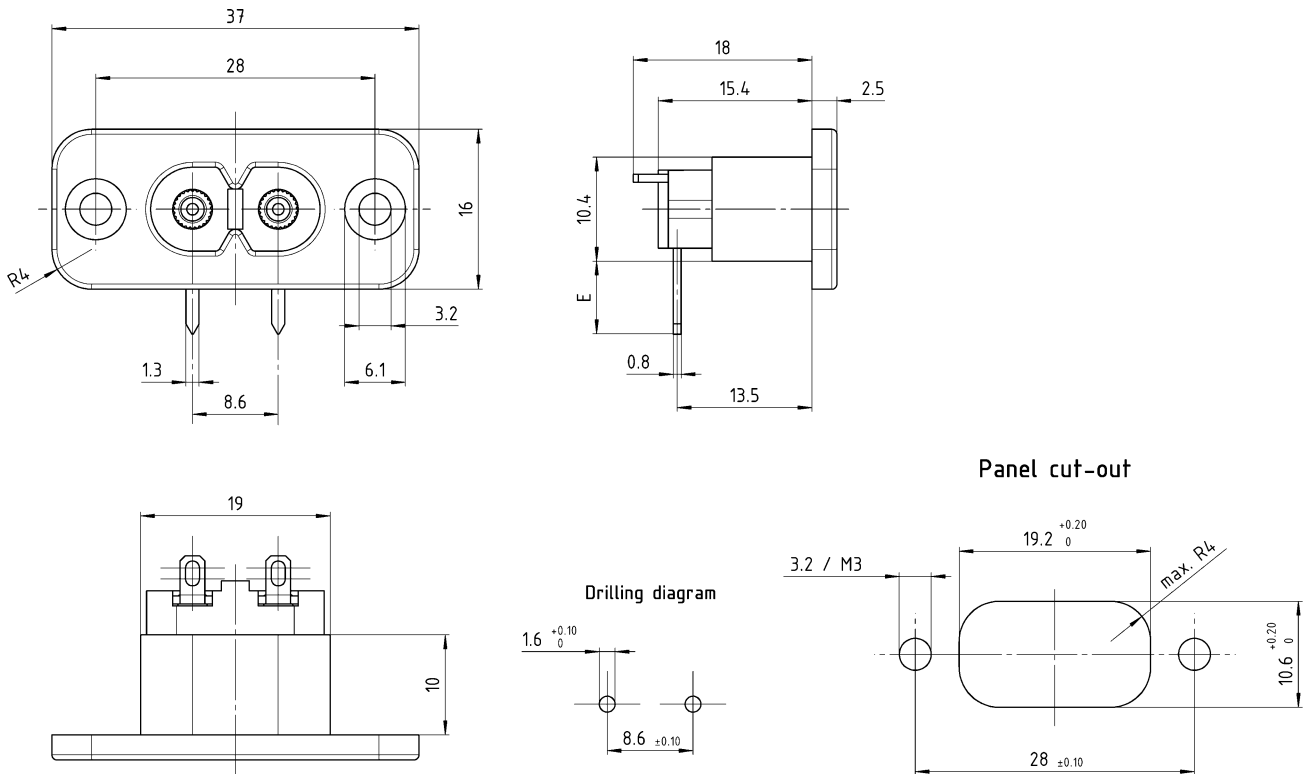
The appliance inlet meets the following standards:

IEC / EN 60320-1 standard sheet C8 (class II),
UL 60320-1 standard sheet C8 (class II),
CSA C22.2 No.60320-1 standard sheet C8 (class II).

Protection class II (L / N) according to IEC 61140.

2 Dimensions

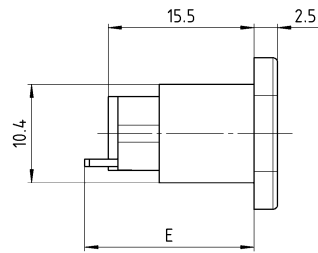
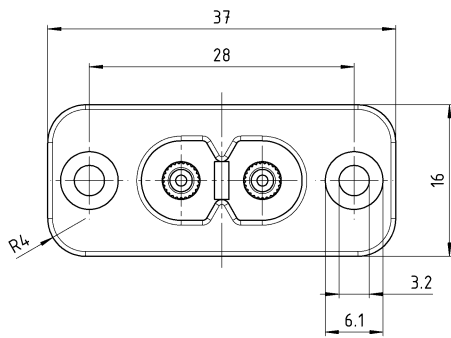
Type 2571 with PCB terminal, additional solder terminal in orientation **A** (Horizontal)



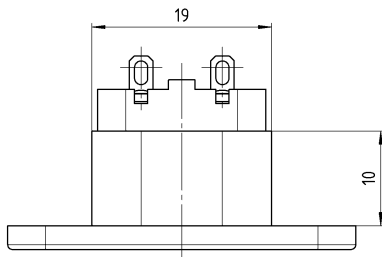
E= PCB terminal standard (additional solder) 7.40 mm
E= PCB terminal short (additional solder) 1.20 mm
E= PCB terminal long (additional solder) 16.40 mm
E= PCB terminal standard 7.20 mm
E= PCB terminal short 5.60 mm
E= PCB terminal long 8.20 mm

Product Documentation					Data Sheet 2571 Appliance Inlet		
owner	creation date	release date	released by	change order no	rev	page	0105.1974
sariogar	10.02.2021	23.03.2021	vettorsa	2020483	D	2 of 7	

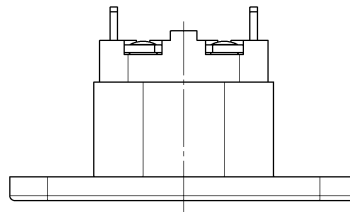
Type 2571 with Quick Connect or solder terminal in orientation **A** (Horizontal) and **B** (Vertical)



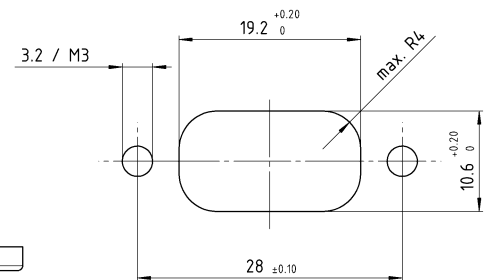
Orientation of terminals A



Orientation of terminals B



Panel cut-out





- E = Solder terminal short 18 mm
- E = Solder terminal long 21.70 mm
- E = Quick-connect terminal 2.8x0.8 mm 24 mm

Product Documentation					Data Sheet 2571 Appliance Inlet		
owner	creation date	release date	released by	change order no	rev	page	0105.1974
sariogar	10.02.2021	23.03.2021	vetersa	2020483	D	3 of 7	

3 Electrical Data

3.1 General :

Rated voltage Un	125 / 250 V AC 50 / 60 Hz	
Rated current In	2.5A 250 V ~ ;  ; 7A 125 V ~ ; 2.5A 250 V ~ ; 	
Insulation resistance (500 V DC ; 1 min.) Fulfil IEC 60320-1:2015	> 10 ³ MΩ > 10 ³ MΩ	between live parts of different potentials between protective conductor PE and live parts
Dielectric strength (50 Hz ; 1 min.) Fulfil IEC 60320-1:2015	> 2.5 kV > 3 kV	between live parts of different potentials. between outside body and all current carrying parts with no greater than 0.4mA leakage current. (Protection class II).
Overvoltage category according to IEC 60664-1:2007	III	
Creepage and creepage distances	> 3 mm	between live parts of different potentials
Pollution degree according to IEC60664-1:2007	3	
Protection class acc. to IEC 61140:2001	Suitable for appliances of protection class II,	

3.2 Diagrams



Product Documentation					Data Sheet 2571 Appliance Inlet		
owner	creation date	release date	released by	change order no	rev	page	0105.1974
sariogar	10.02.2021	23.03.2021	vetersa	2020483	D	4 of 7	

4 Mechanical Data

4.1 Mounting :

The appliance inlet type 2571 is suitable for screw-on or rivet mounting from the front side of panel.

Connection takes place either with quick-connect terminals 2.8x0.8mm, solder terminals or PCB terminals.

4.2 Terminals :

L / N and protective conductor PE Quick-connect terminals 2.8x0.8mm, acc. to IEC 61210
Solder terminals or PCB terminals.

Solderability
PCB terminals 245° C / 3s acc. to IEC 60068-2-20, test Ta method 1

Solder terminals 350° C / 3s acc. to IEC 60068-2-20, test Ta method 2

Resistance to soldering heat:

PCB terminals 260° C / 10s acc. to IEC 60068-2-20, test Tb method 1

Solder terminals 350° C / 10s acc. to IEC 60068-2-20, test Tb method 2

4.3 Packing and weight :

Original packing 100 pcs.

Net weight gr. per 1 pcs. 4.5 - 5 gr.

5 Materials

Socket Type PA 6 polyamide
Flame class UL94 V-0 (1mm thick)
Comparative tracking index CTI 600 V
Temp.-index RTI, electr. 130° C
Index oxygen LO I 30 %
UL File-no . E53898

Live parts Copper alloy, protected against corrosion.

Product Documentation					Data Sheet 2571 Appliance Inlet		
owner	creation date	release date	released by	change order no	rev	page	0105.1974
sariogar	10.02.2021	23.03.2021	vettersa	2020483	D	5 of 7	

6 Environmental Condition



6.1 Temperatures

Storage temperature:	- 40°C up to + 85°C
Ambient temperature:	- 25°C up to + 25°C , but occasionally reaching +35°C
Operating temperature:	- 25°C up to + 70°C
Climatic category:	25 / 085 / 21 according to IEC 60068-1

6.2 Vibration and shock resistance :

Resistance to vibration according to IEC 60068-2-6	Test Fc ; Frequency range 10 - 500 Hz, cross-over frequency 60 Hz < 60 Hz constant amplitude of 0.75mm > 60 Hz constant acceleration of 10 g
--	---

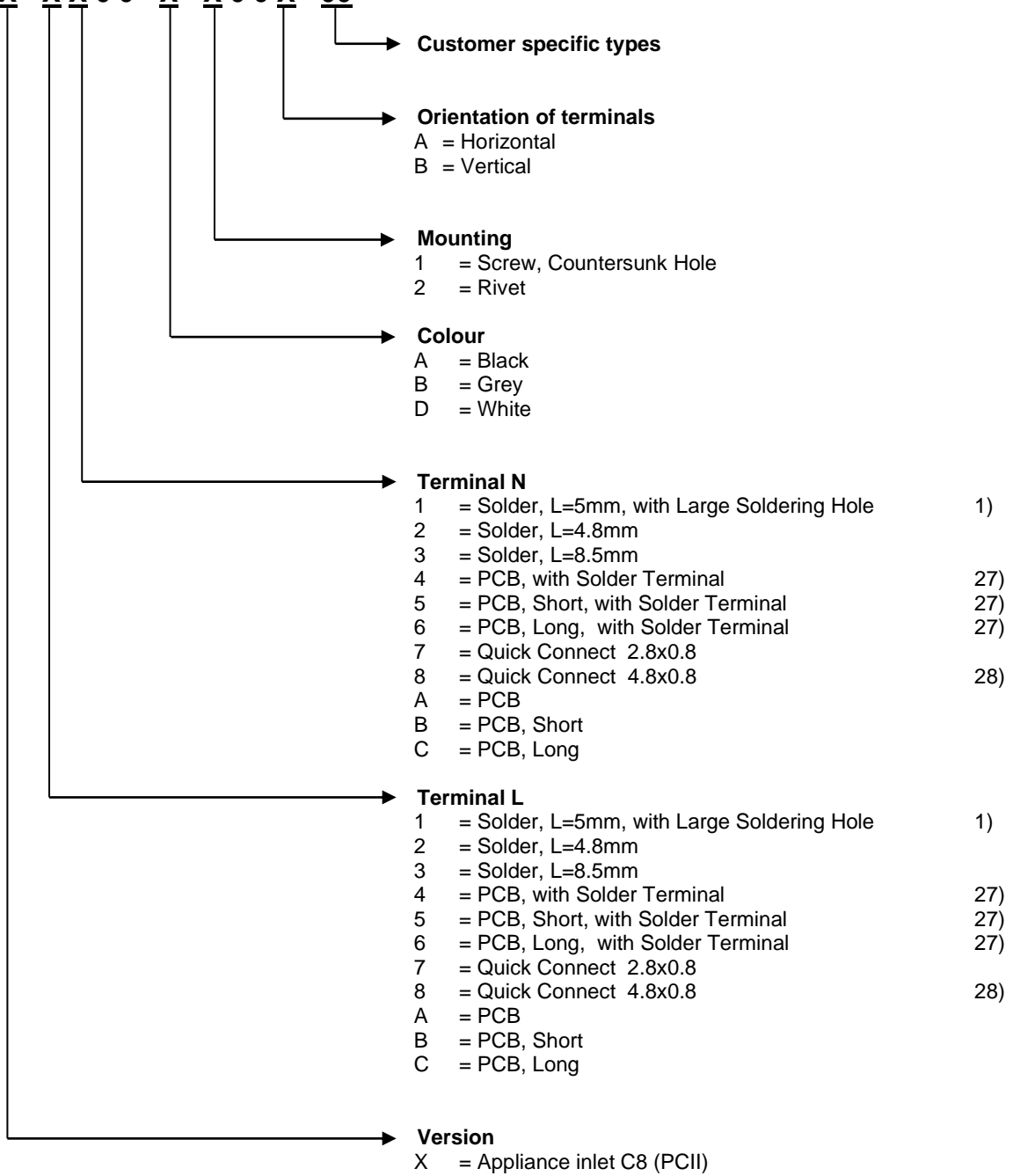
7 Approvals

Country	Certification Body	Type	Mark	File no.
Europe	VDE	ENEC Mark		40034368
U.S.A. / Canada	UL	Certification / Recognition		E96454

Product Documentation					Data Sheet 2571 Appliance Inlet		
owner	creation date	release date	released by	change order no	rev	page	0105.1974
sariogar	10.02.2021	23.03.2021	vetersa	2020483	D	6 of 7	

8 Configuration Code

2571 - X - X X 0 0 - X - X 0 0 X - 0 0



1) Only on request
27) Orientation A only
28) Orientation B only

Product Documentation					Data Sheet 2571 Appliance Inlet		
owner	creation date	release date	released by	change order no	rev	page	0105.1974
sariogar	10.02.2021	23.03.2021	vettersa	2020483	D	7 of 7	