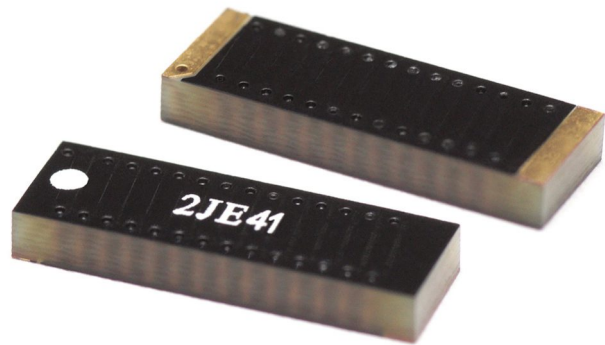


2JE41

868 MHz ISM Surface Mount

Key Features

- 868 MHz ISM
- 863-870 MHz
- Surface Mount
- Easy to Integrate
- Compact Size
- Fiberglass Material
- Ground Plane Dependent
- Dimensions 12 x 4 x 1.6 mm



1. Antenna and electrical specifications

Parameters	868 MHz ISM Antenna
Standards	ZigBee, ISM, SigFox, LoRa, Helium
Band (MHz)	868
Frequency (MHz)	863-870
Return Loss (dB)	~-13.9
VSWR	~1.5:1
Efficiency (%)	~52.4
Peak Gain (dBi)	~2.2
Average Gain (dB)	~-2.8
Impedance (Ohm)	50
Polarisation	Linear
Radiation Pattern	Omni-Directional
Max. Input Power (W)	1

Antenna Measurement Conditions:

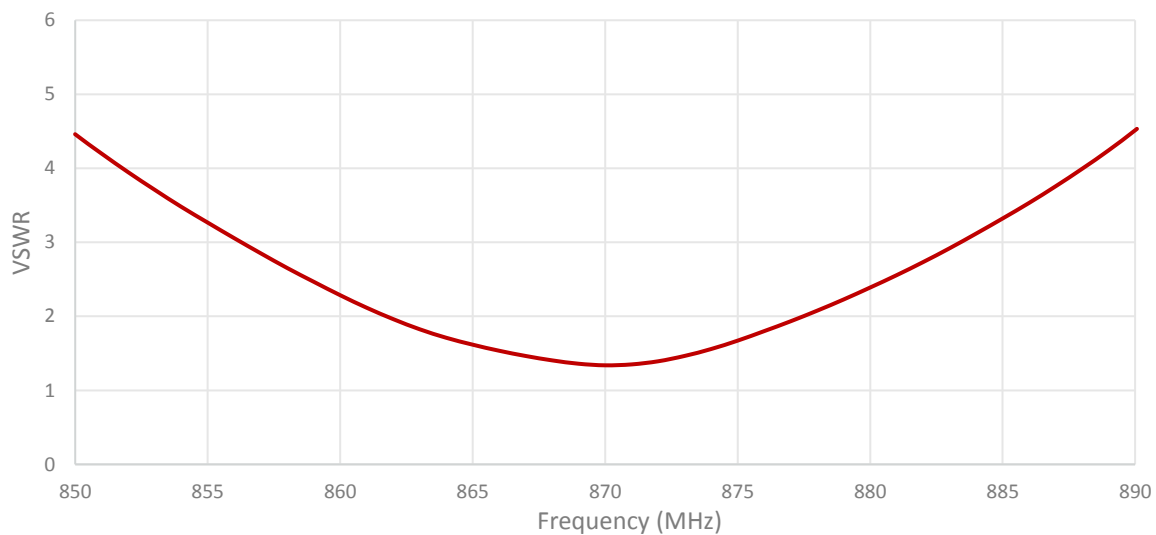
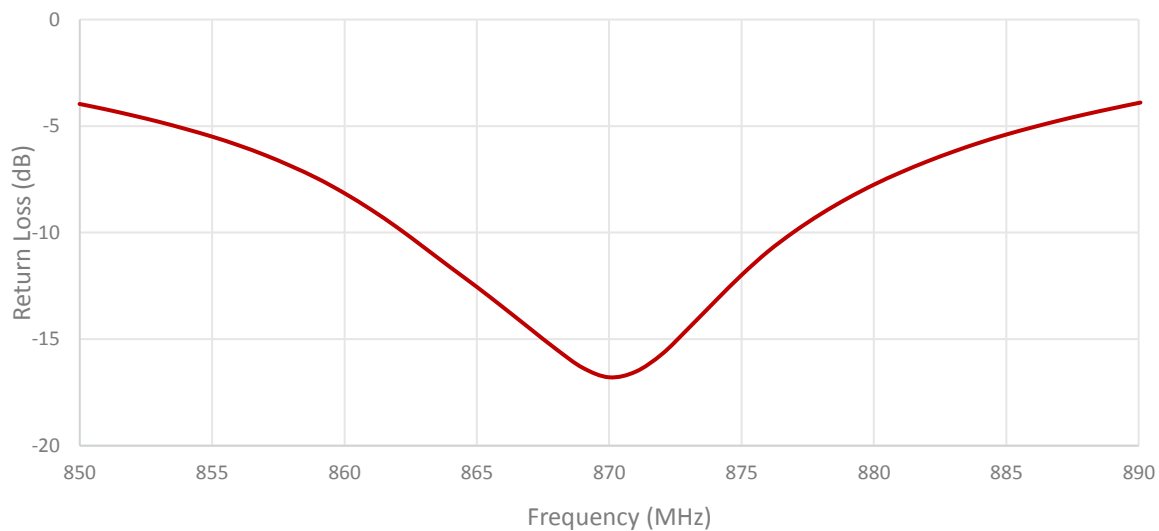
Mounted on ground plane of 50 x 90 mm

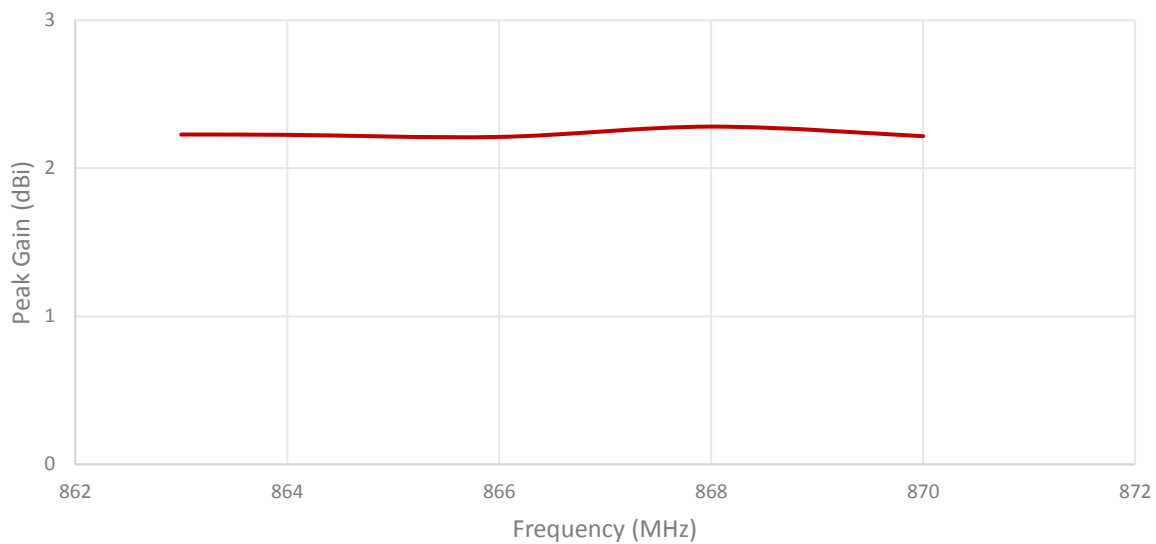
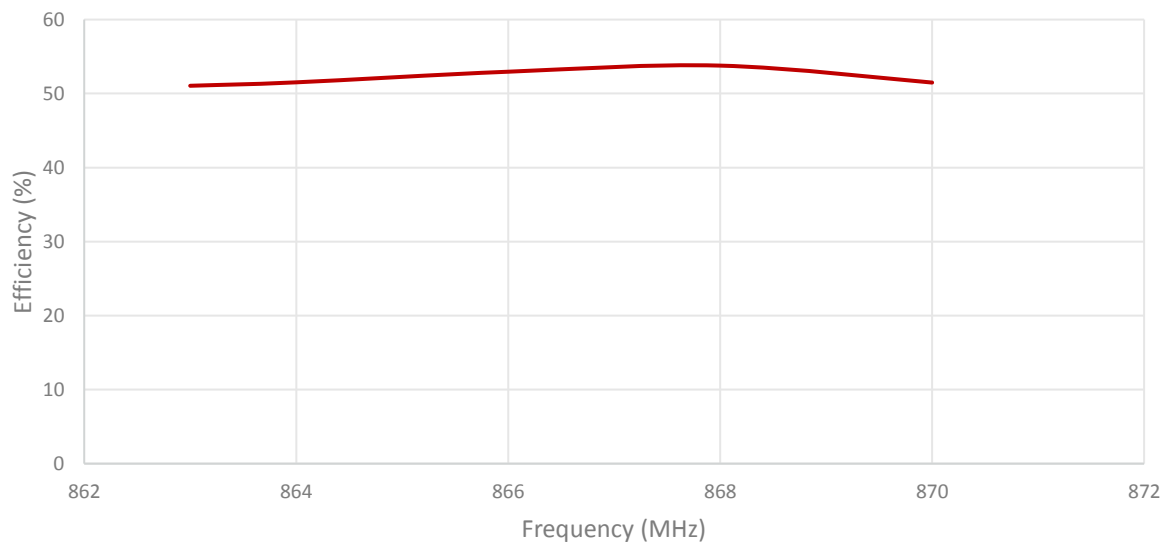
Measured in Certified CTIA 3D Anechoic Chamber

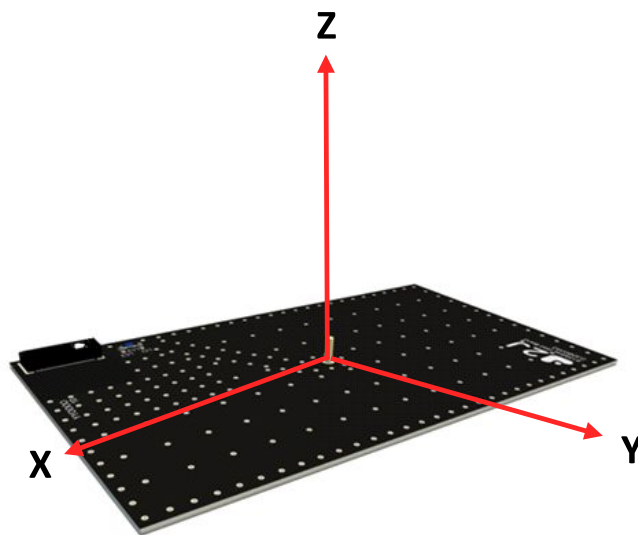
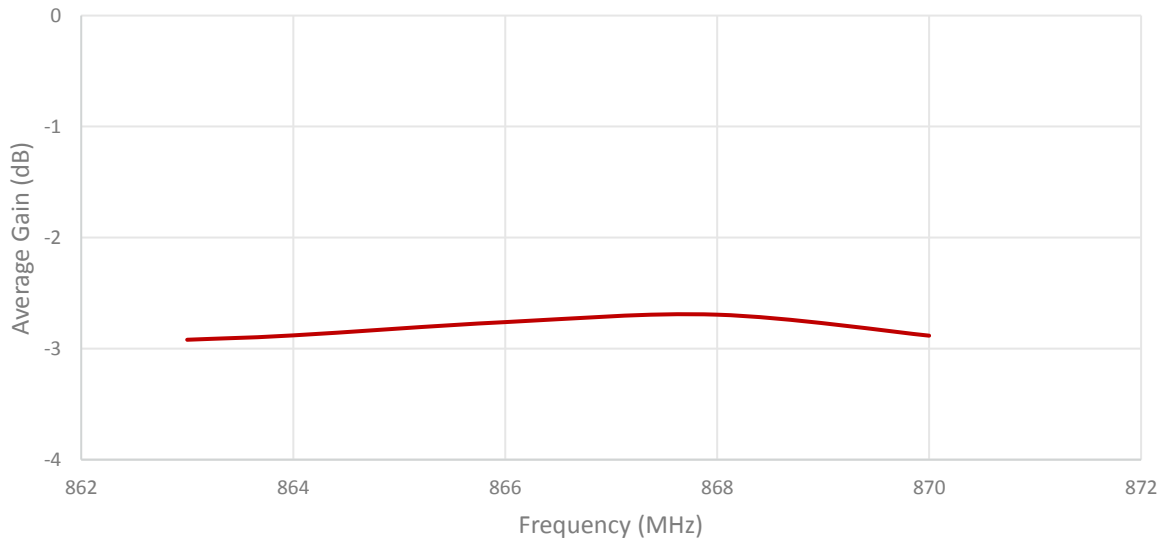
2. Mechanical and environmental specifications

Specifications	2JE41
Mounting Type	Surface Mount
Dimensions (mm)	12 x 4 x 1.6
Material	Fiberglass
Operating Temperature (C)	-40 to +85
Storage Temperature (C)	-40 to +85
Substance Compliance	RoHS
Typical Shear Force Test	10Kgf according to IEC62137-1-2:2007

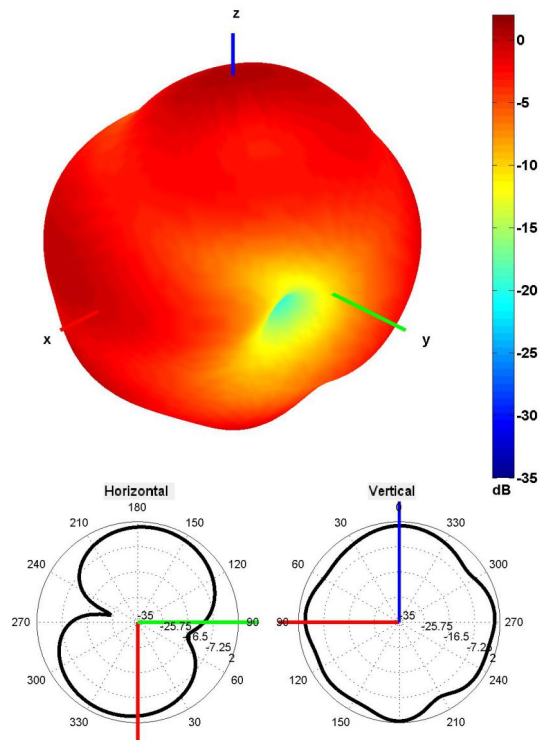
3. Antenna parameters





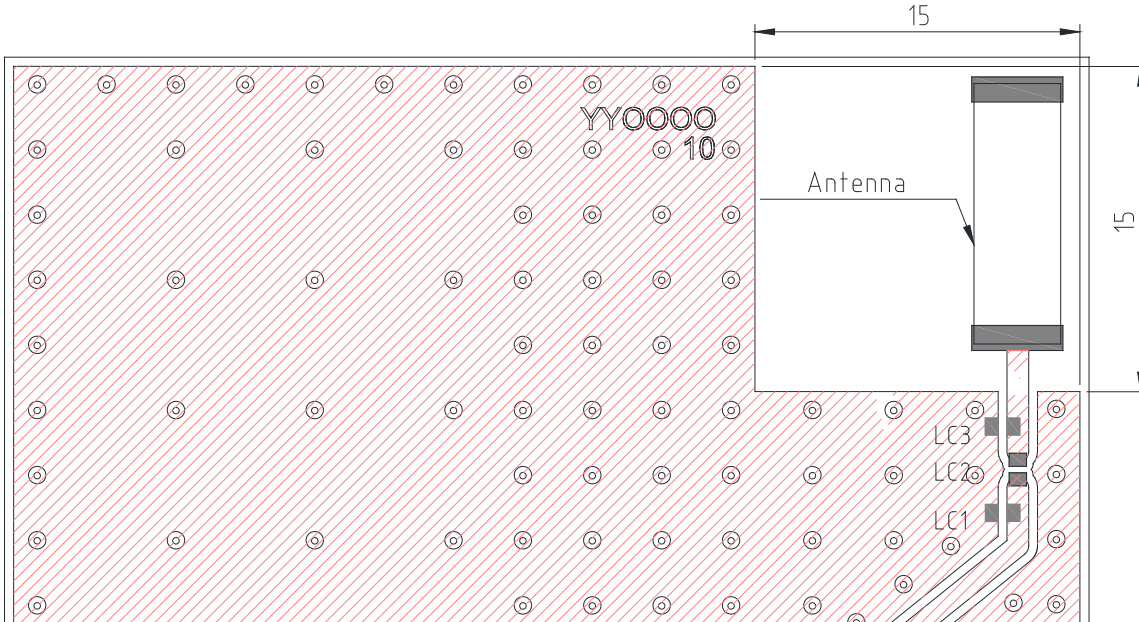


Radiation pattern reference



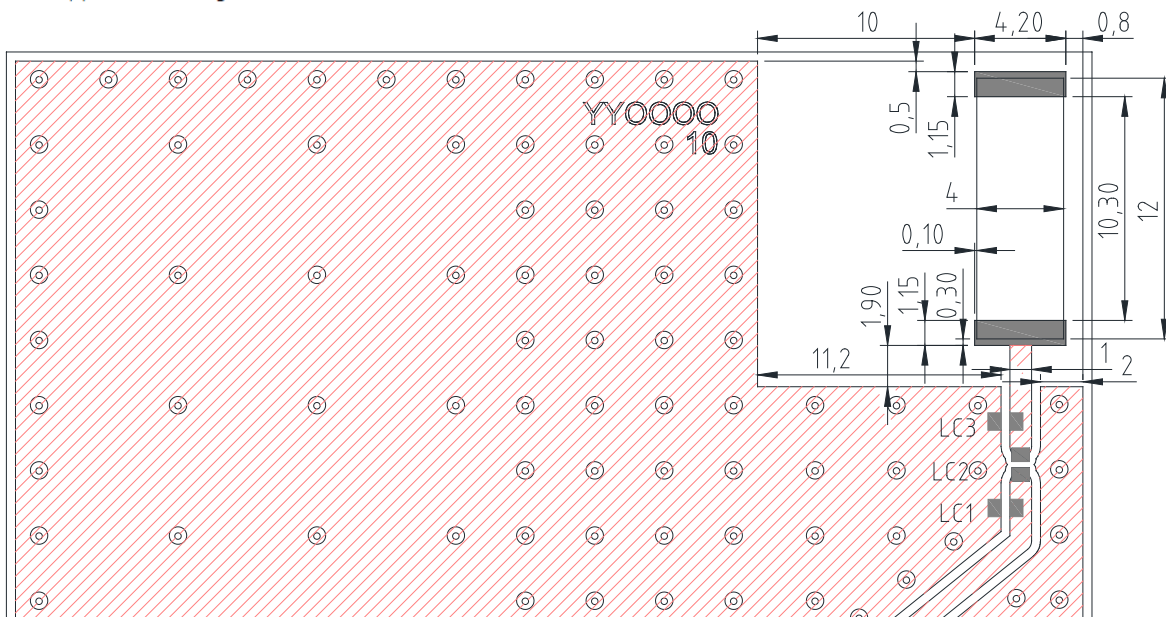
868 MHz Radiation pattern

4. PCB Layout



Minimum area required for antenna integration (15mm × 15mm)

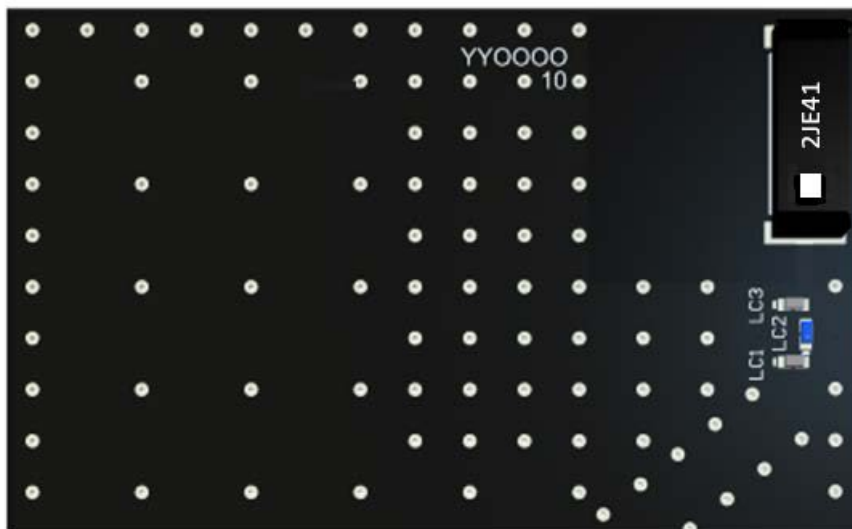
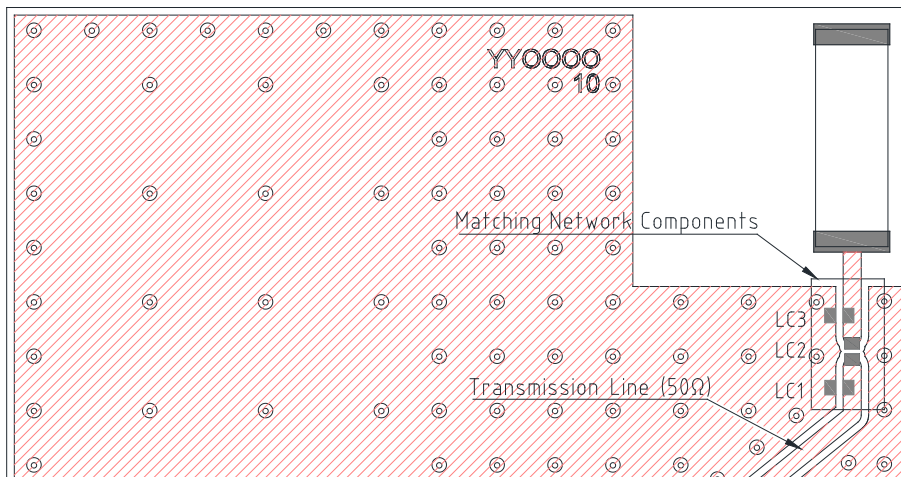
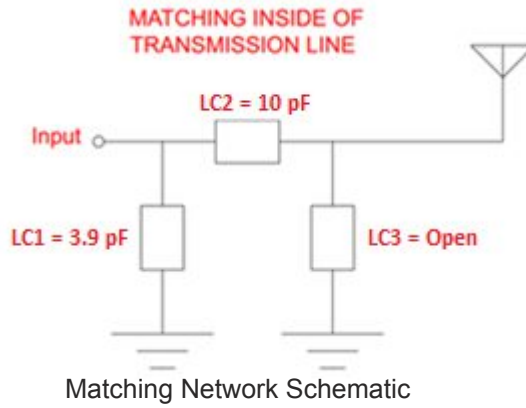
- Solder Region
- Copper Region
- Copper-Free Region



Layout dimensions for antenna integration (mm)

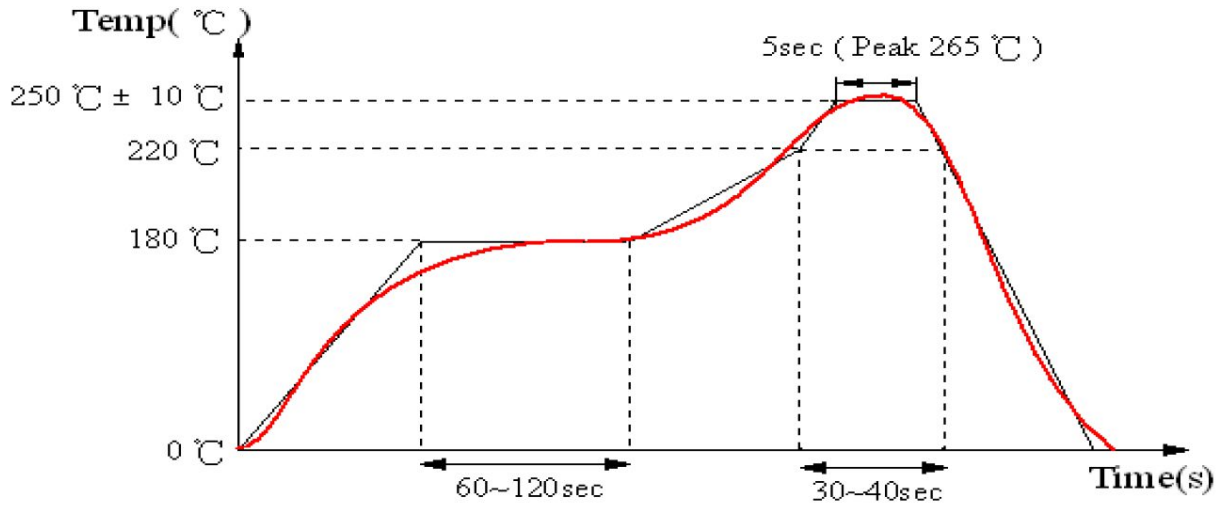
- Solder Region
- Copper Region
- Copper-Free Region

5. Matching Components



3D View of matching components and recommended values (LC1=3.9 pF, LC2=10 pF, LC3=DNP)

REFLOW TEMPERATURE PROFILE



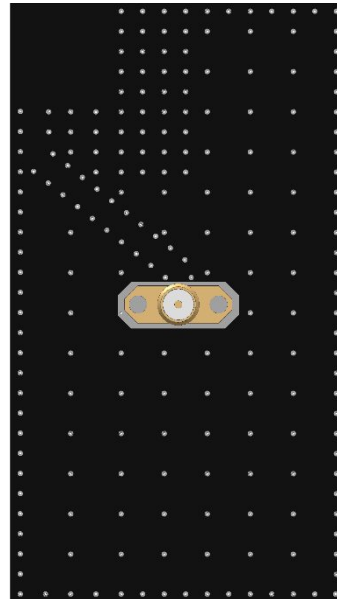
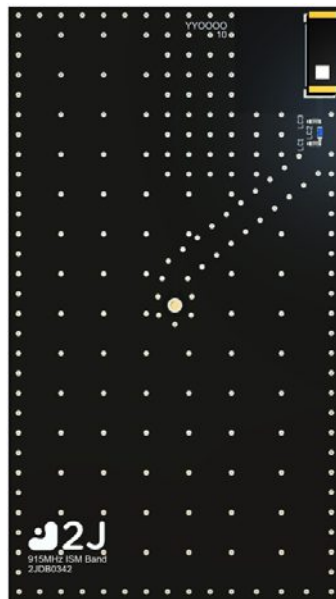
6. Evaluation Board

90mm x 50mm

90mm x 50mm

90mm x 50mm

90mm x 11.9mm
(PCB: 0.8mm, Antenna: 1.6mm,
Connector: 9.5mm)



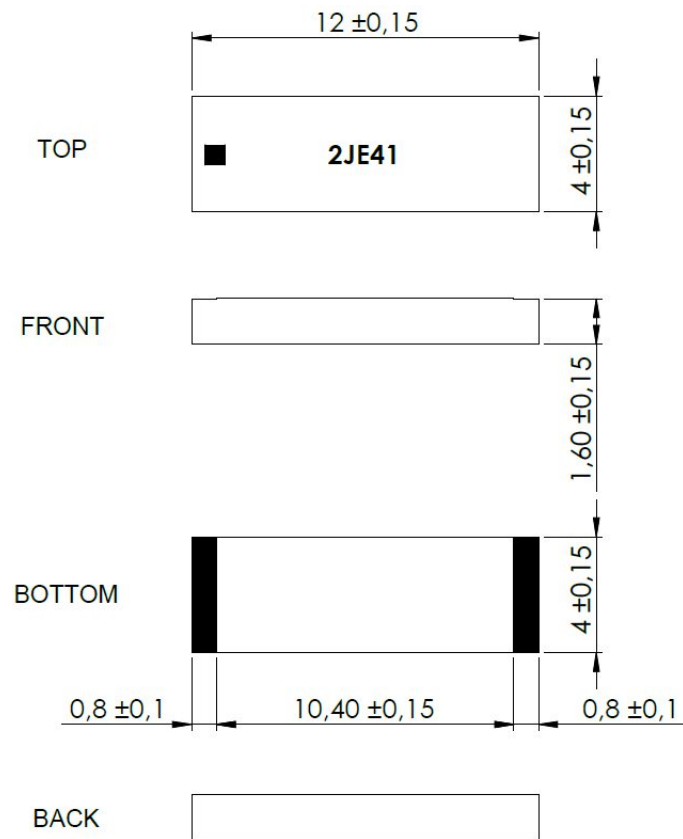
Front View without Antenna

Front View with Antenna

Back View

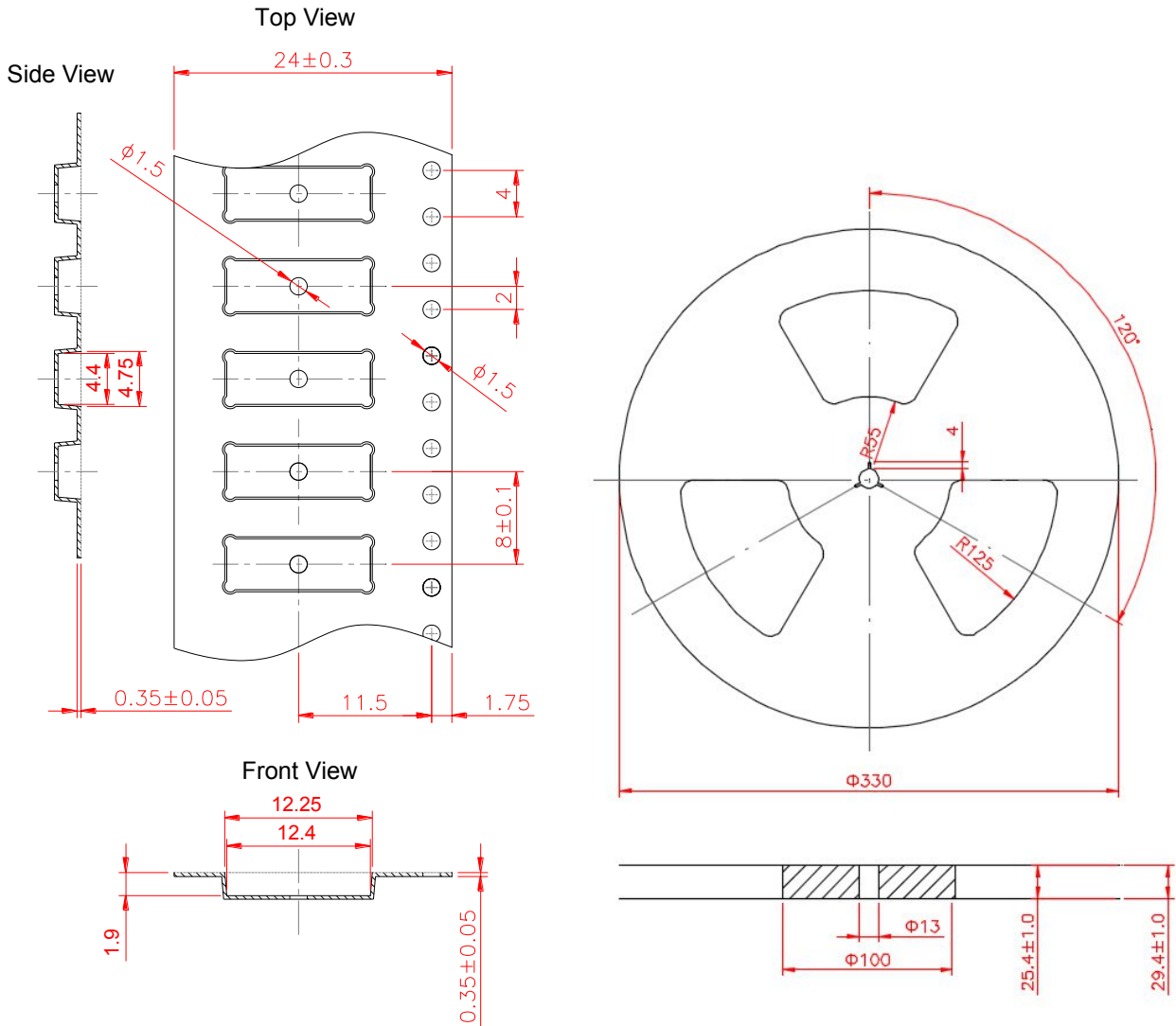
Side View

7. Antenna drawings



fiberglass antenna body (mm)

8. Tape and Reel Information



Tape and Reel Specifications

9. Packaging

PACKAGING SPECIFICATION

Antenna	2JE41
REEL	
Max Quantity per Reel	2,000
REEL BOX	
Reels per Box	1
Reel Box Dimensions (cm)	35.5 x 35.5 x 4.0
Reel Box Weight (Kg)	0.68
CARTON	
Reels per Carton	4
Max Quantity per Carton	8,000
Reel Carton Dimensions (cm)	38.5 x 36.5 x 21
Reel Carton Weight (Kg)	2.72

10. Antenna Images

